

# 1832 N LOMBARD ST

Portland | OR, 97217

## FOR SALE OR LEASE



### OFFICE SPACE FOR SALE OR LEASE DETAILS

- Sale price: \$785,000
- Lease price: \$27.50/SF MG
- Total size: ± 1,836 SF
  - Main building: ± 1,436 SF
  - Out building: ± 400 SF
- Land size: ± 4,687SF
- Zoning: CG

### FEATURES

- High-visibility location with dedicated off-street parking on a major thoroughfare.
- 4 distinct treatment rooms plus a 400 SF detached building ideal for medical, chiro, vet, or wellness use.
- New roof, HVAC (heat pump), and water main.
- Out building is ideal for break room or medical use



07.02.2026

For more information or a property tour, please contact:

**TIM PFEIFFER**

503.225.8455

TimP@norris-stevens.com



*Information contained herein has been obtained from others and considered to be reliable; however, a prospective purchaser or lessee is expected to verify all information to his/her own satisfaction.*

## Norris & Stevens

INVESTMENT REAL ESTATE SERVICES

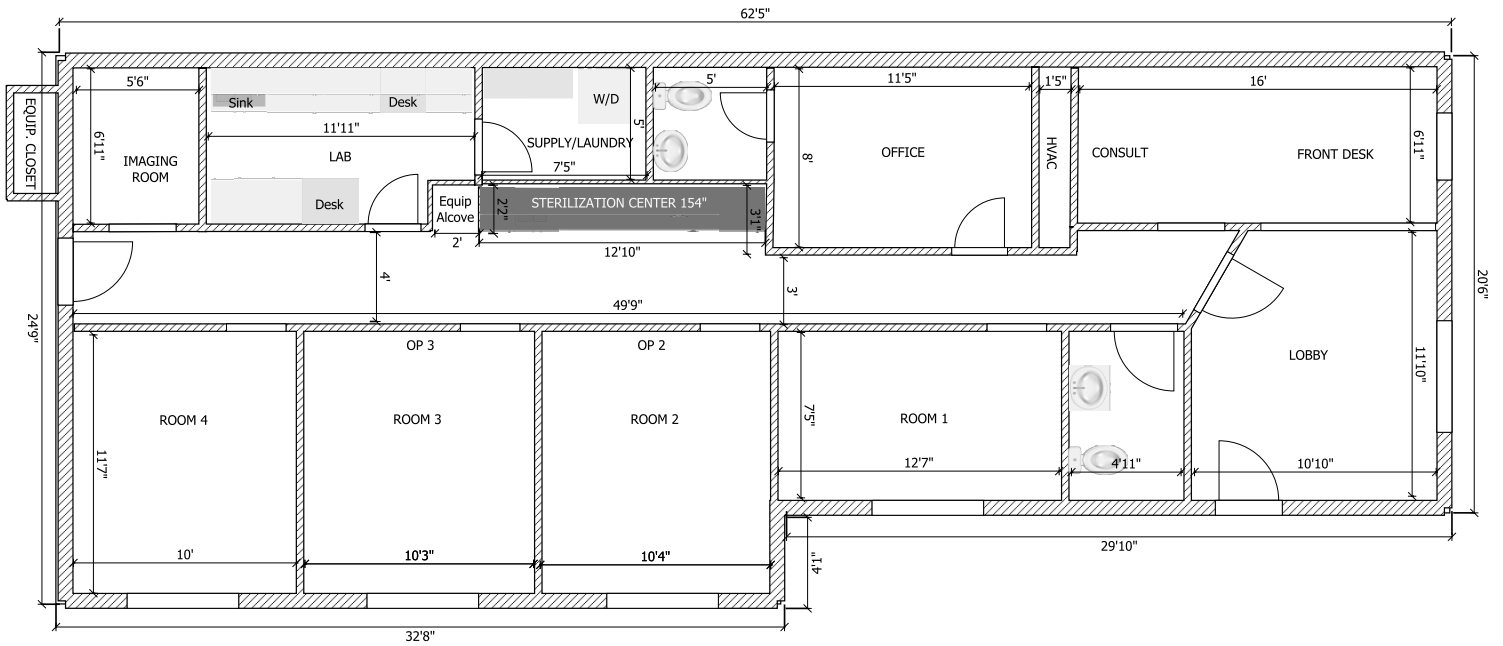
900 SW 5th Avenue • 17th Floor • Portland, OR 97204  
503.223.3171 • norris-stevens.com

# 1832 N LOMBARD ST

Portland | OR, 97217

# FOR SALE OR LEASE

## PROPERTY PHOTOS AND FLOOR PLAN



For more information or a property tour, please contact:

**TIM PFEIFFER**  
503.225.8455  
TimP@norris-stevens.com

## Norris & Stevens

INVESTMENT REAL ESTATE SERVICES



Information contained herein has been obtained from others and considered to be reliable; however, a prospective purchaser or lessee is expected to verify all information to his/her own satisfaction.

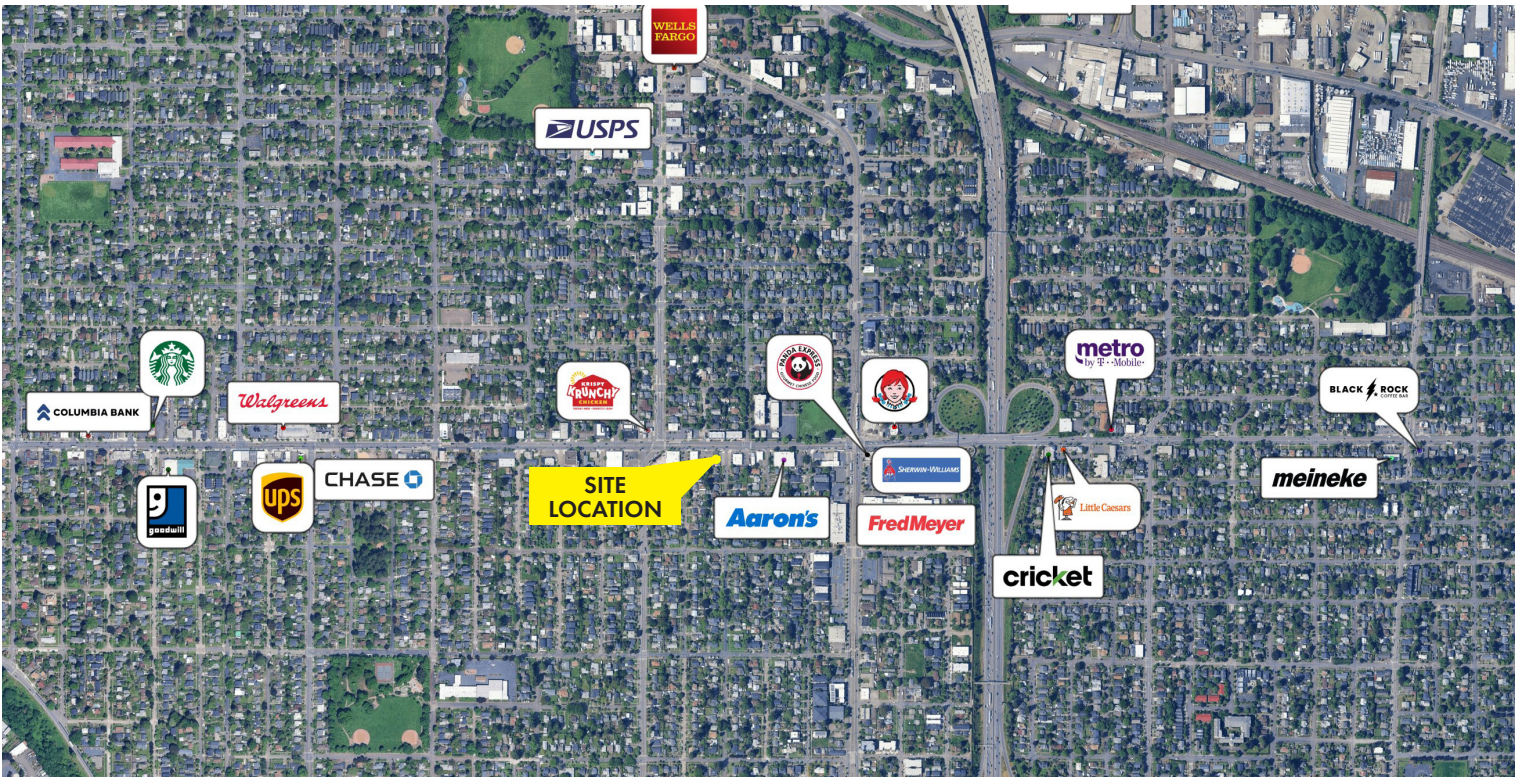
900 SW 5th Avenue • 17th Floor • Portland, OR 97204  
503.223.3171 • norris-stevens.com

# 1832 N LOMBARD ST

Portland | OR, 97217

## FOR SALE OR LEASE

### PROPERTY OUTLINE



For more information or a property tour, please contact:

**TIM PFEIFFER**

503.225.8455

TimP@norris-stevens.com

## Norris & Stevens

INVESTMENT REAL ESTATE SERVICES



Information contained herein has been obtained from others and considered to be reliable; however, a prospective purchaser or lessee is expected to verify all information to his/her own satisfaction.

900 SW 5th Avenue • 17th Floor • Portland, OR 97204  
503.223.3171 • norris-stevens.com