

FOR LEASE - DIAMOND, IL

E DIVISION ST



© 2022 CR&M Commercial Realty. All rights reserved. All information contained herein is from sources deemed reliable; however, no representation or warranty is made to the accuracy thereof.

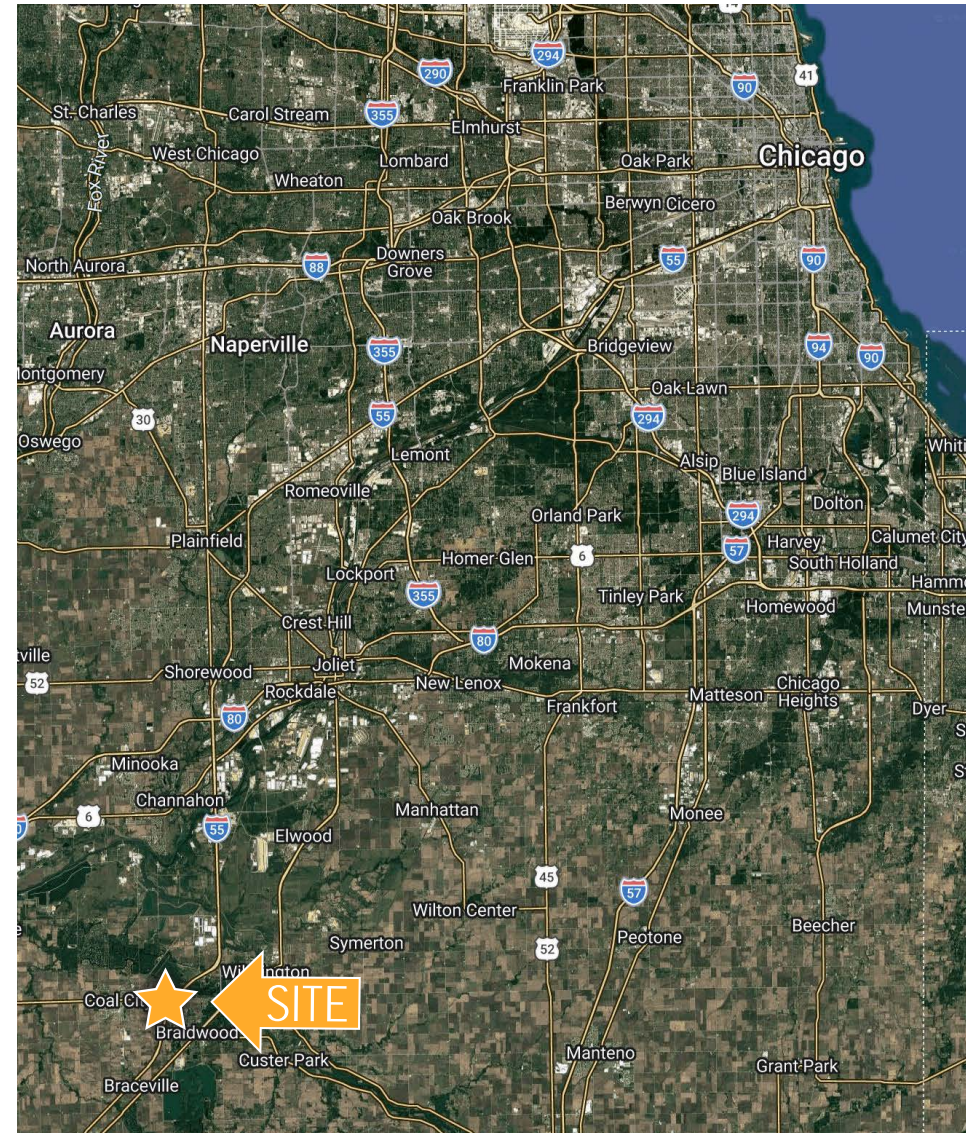
Todd J. Cabanban
Managing Broker | 312.371.4494 | todd@crmcr.com

Cameron Boyce
Associate Broker | 260.415.6050 | cameron@crmcr.com



HIGHLIGHTS

- Positioned along Division Street within the primary retail corridor serving Diamond and the surrounding communities
- Adjacent to the newly developed Jewel-Osco, benefiting from strong grocery-anchored traffic
- Opportunity to attract national retailers seeking entry into a growing suburban market
- Proposed 8,300 SF multi-tenant retail building designed to accommodate a variety of uses



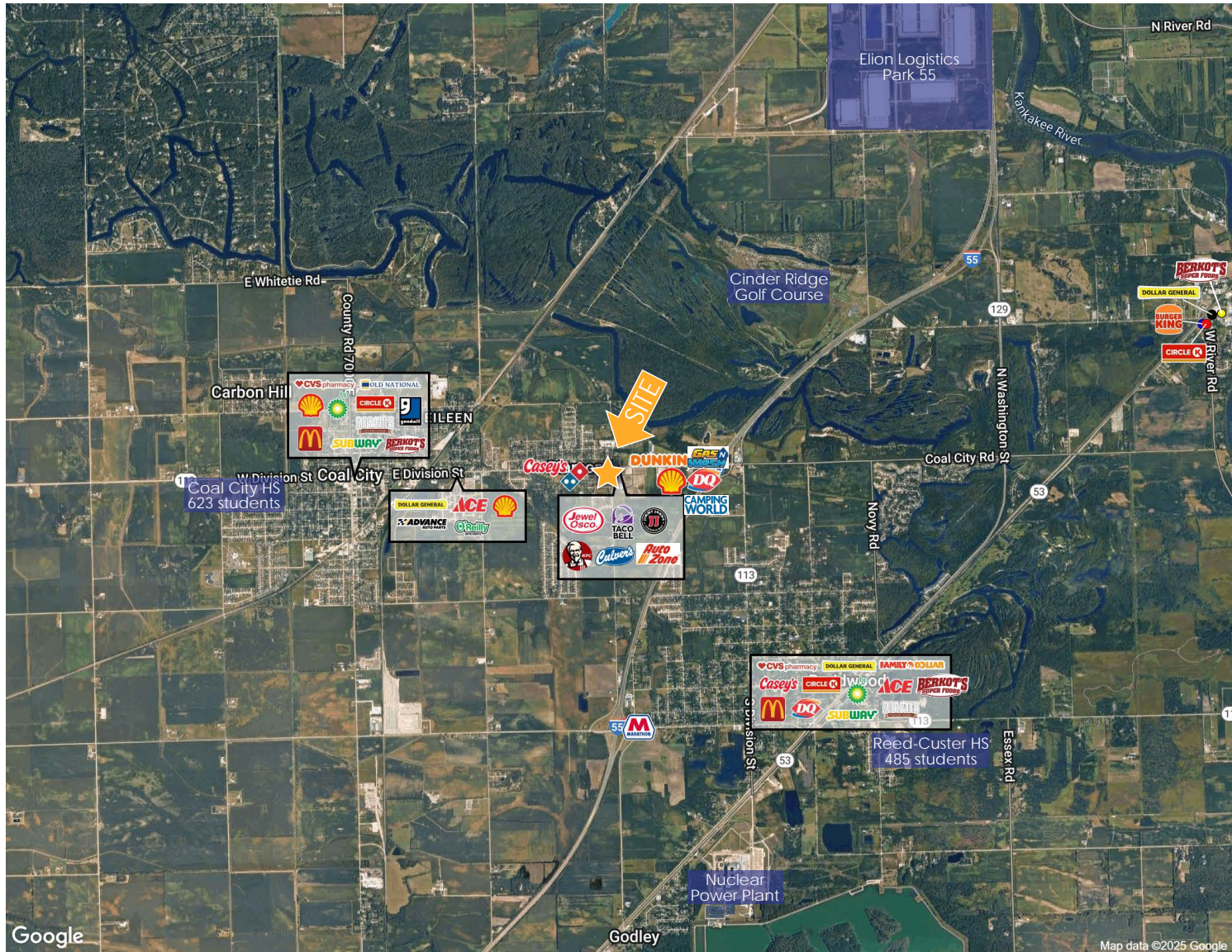
©2022 CR&M Commercial Realty. All rights reserved. All information contained herein is from sources deemed reliable; however, no representation or warranty is made to the accuracy thereof.

Todd J. Cabanban
Managing Broker | 312.371.4494 | todd@crmcr.com

Cameron Boyce
Associate Broker | 260.415.6050 | cameron@crmcr.com



MARKET AERIAL



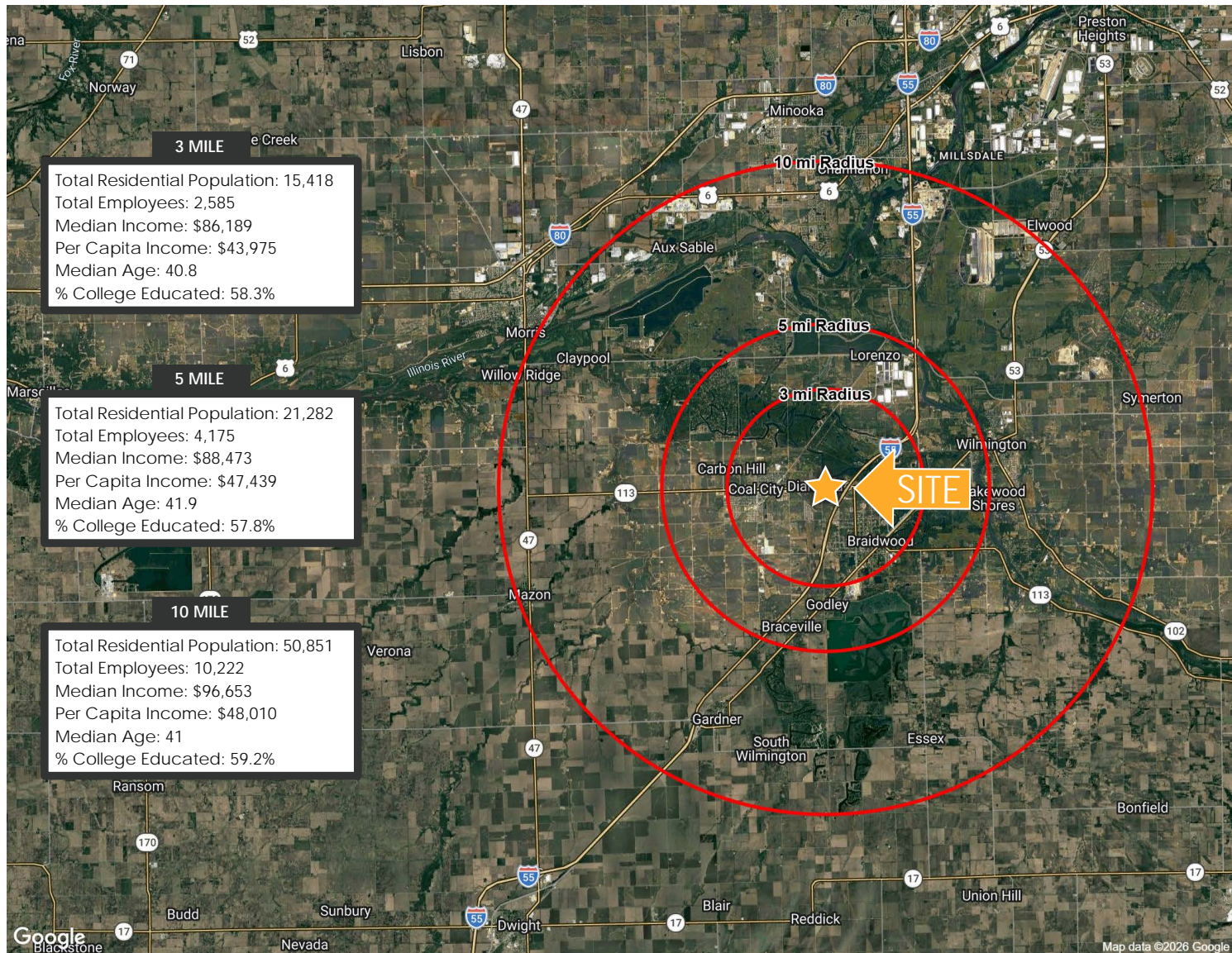
©2022 CR&M Commercial Realty. All rights reserved. All information contained herein is from sources deemed reliable; however, no representation or warranty is made to the accuracy thereof.

Todd J. Cabanban
Managing Broker | 312.371.4494 | todd@crmc.com

Cameron Boyce
Associate Broker | 260.415.6050 | cameron@crmc.com



10 MILE DEMOGRAPHICS



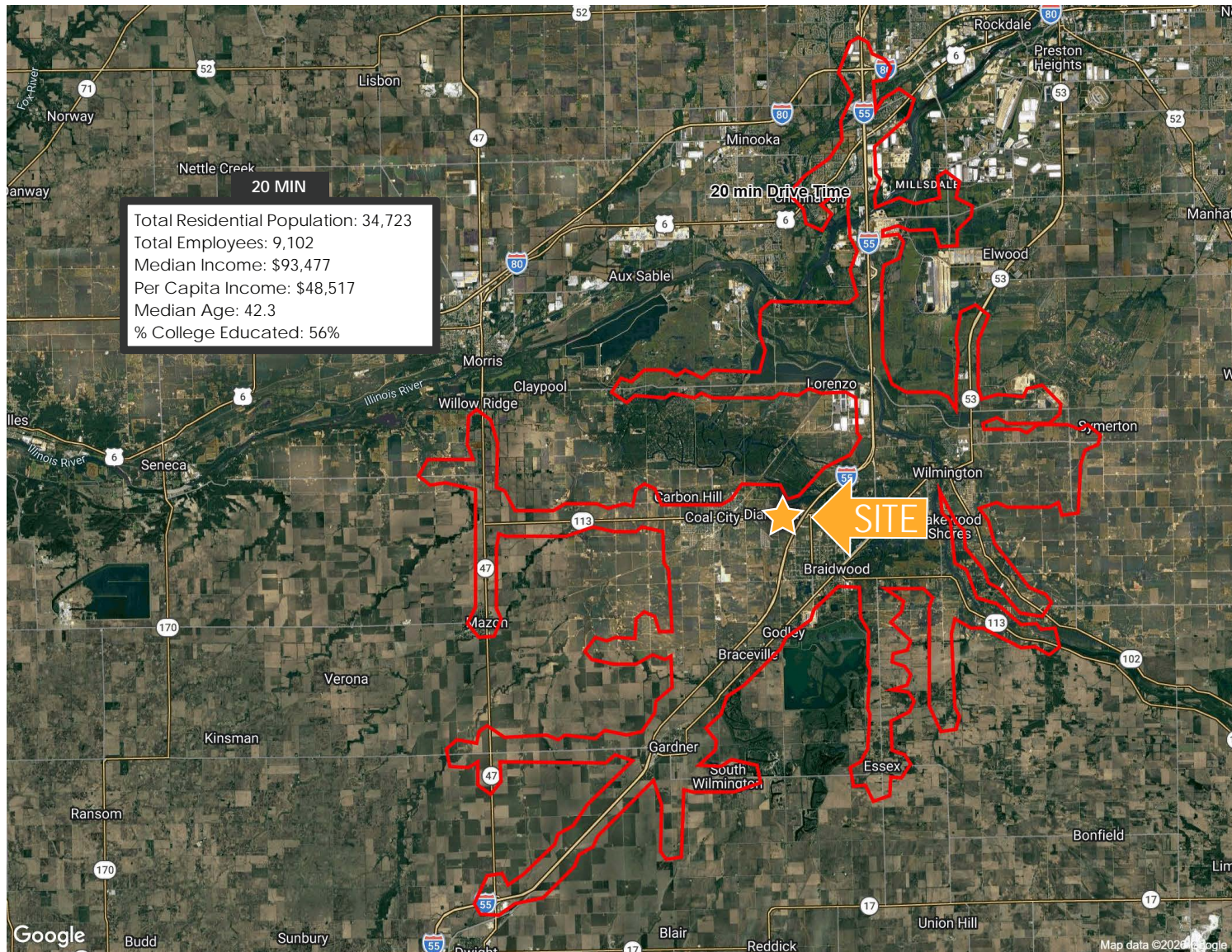
©2022 CR&M Commercial Realty. All rights reserved. All information contained herein is from sources deemed reliable; however, no representation or warranty is made to the accuracy thereof.

Todd J. Cabanban
 Managing Broker | 312.371.4494 | todd@crmcr.com

Cameron Boyce
 Associate Broker | 260.415.6050 | cameron@crmcr.com



20 MIN DRIVE TIME DEMOGRAPHICS



©2022 CR&M Commercial Realty. All rights reserved. All information contained herein is from sources deemed reliable; however, no representation or warranty is made to the accuracy thereof.

Todd J. Cabanban
Managing Broker | 312.371.4494 | todd@crmcr.com

Cameron Boyce
Associate Broker | 260.415.6050 | cameron@crmcr.com



DEVELOPMENT PLAN



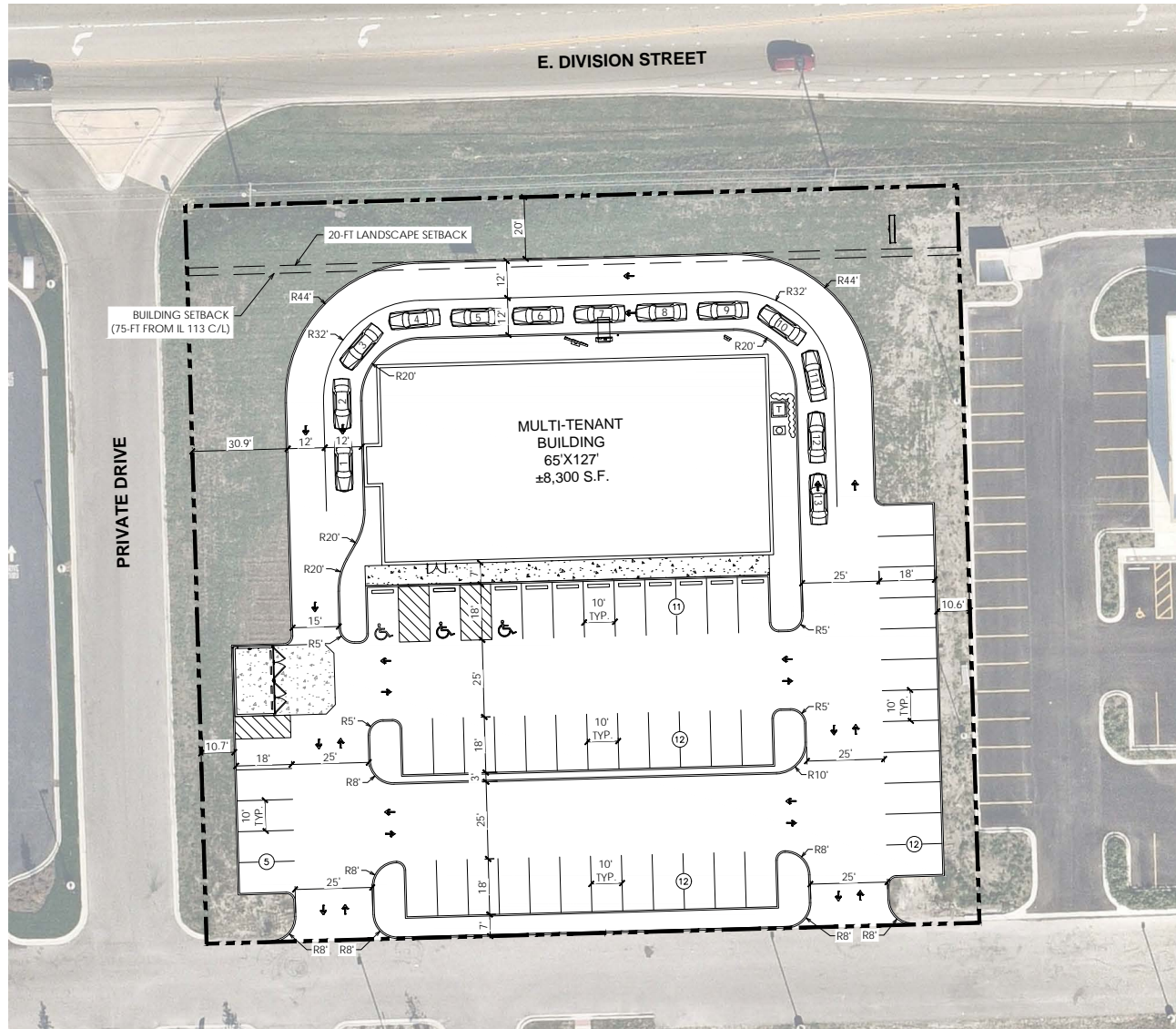
©2022 CR&M Commercial Realty. All rights reserved. All information contained herein is from sources deemed reliable; however, no representation or warranty is made to the accuracy thereof.

Todd J. Cabanban
 Managing Broker | 312.371.4494 | todd@crmcr.com

Cameron Boyce
 Associate Broker | 260.415.6050 | cameron@crmcr.com



PROPOSED SITE PLAN



©2022 CR&M Commercial Realty. All rights reserved. All information contained herein is from sources deemed reliable; however, no representation or warranty is made to the accuracy thereof.

Todd J. Cabanban
Managing Broker | 312.371.4494 | todd@crmcr.com

Cameron Boyce
Associate Broker | 260.415.6050 | cameron@crmcr.com

