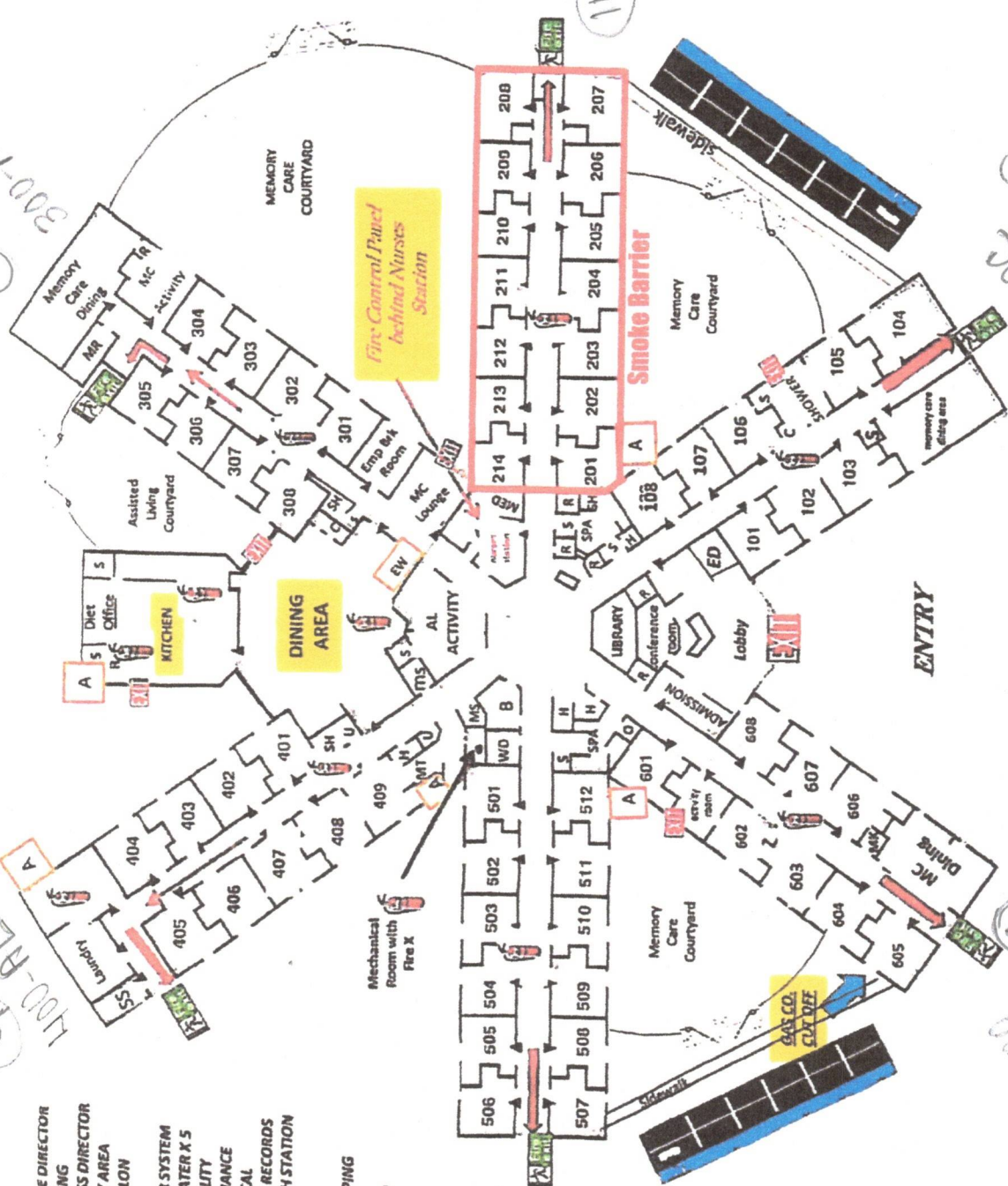


- ED - EXECUTIVE DIRECTOR
- MK - MARKETING
- WD - WELLNESS DIRECTOR
- ACT - ACTIVITY AREA
- B - BEAUTY SALON
- O - OXYGEN
- SS - SPRINKLER SYSTEM
- A - WATER HEATER X 5
- U - SOILED UTILITY
- MT - MAINTENANCE
- M - MECHANICAL
- MR - MEDICAL RECORDS
- EW - EYE WASH STATION
- C - CLOSET
- SH - SHOWER
- H - HOUSEKEEPING
- S - STORAGE
- R - RESTROOM



AL=35
ALZ=28
Total=63

300-MC
⑧ + a = 10

100-MC
⑧ + a = 10

100-AL
⑨

600-MC
⑧

500-AL
⑫

200-AL
⑭

Hall 100-Kaufman-Memory Care

Library Bathroom
 Bathroom Storage-Spa-Mop Station
 Entry-Main Lobby 108 A/B
 101 107 A/B
 102 106
 103 Closet-Storage
 Storage Shower-Courtyard
 MC-Dinning Area 105
 104

Exit Door
 (Side Bldg)
 8 (2)=10

Hall 200-Corsicana-AL

Bathroom
 Storage-Spa-Bathroom
 201
 202
 203
 204
 205
 206
 207 (Lg closet)
 Nurses Station/Med Room
 214
 213
 212
 211
 210
 209
 208 (Lg closet)

Exit Door
 (Side Bldg)
 14

Hall 300-Palestine-Memory Care

Activity Area-AL - Nurse Station
 Wash Station - Memory Care Lobby
 Dinning area opening
 Storage
 Shower/Bath Employee Breakroom
 308 A/B 301
 307 A/B 302
 306 303
 305 304

(Back Bldg)
 8 (2)=10

Hall 400-Jacksonville-AL

AL-Activity Area
 Housekeeping Room
 Exit Door/Mechanical Room/Maintenance Office
 Solid Utility Medical Supply
 Housekeeping (Mop Station)
 Dinning area opening
 409 (lg closet1 bath) Storage Shelves
 408 Shower/Bath
 407 401
 406 402
 405 403
 404

(Back Bldg)
 9

Medical Records
 Dinning Area-Memory Care
 Activity Area-Memory Care
 Bathroom

Dinning Area
 AL-Courtyard
 Kitchen

Sprinkler System
 Exit Door
 Laundry Area

Hall 500 - Tyler-AL

Beauty Salon	Storage-Spa
Wellness Director	Storage
501 Model	512
502	511
503	510
504	509
505	508
506	507
12	

Hall 600 - Canton - Memory Care (Private)

Housekeeping	Library
Spa	Bathroom
Bathroom	Main Lobby Entrance
601	608
MC-Activity Area	
Courtyard	607
602	606 (lg closet/1bath)
603	Marketing Office
604	MC-Dinning Area
605	
8	

AL-35
MC-28
63

Total: