

JAMESON.

# FOR LEASE

## RETAIL/OFFICE

2800 N. Milwaukee Avenue | Chicago, IL 60618

Inquire for rental details.



Robert Jay Friedman  
Senior Vice President, Sales & Leasing  
312.810.7203  
rjfsite@jameson.com

[JAMESONCOMMERCIAL.COM](http://JAMESONCOMMERCIAL.COM)

©Jameson Real Estate LLC. All information provided herein is from sources deemed reliable. No representation is made as to the accuracy thereof & it is submitted subject to errors, omissions, changes, prior sale or lease, or withdrawal without notice. Projections, opinions, assumptions & estimates are presented as examples only & may not represent actual performance. Consult tax & legal advisors to perform your own investigation.

JAMESON.



## LEASE OVERVIEW

**LEASE PRICE:** Inquire

**BUILDING SIZE:** 37,800 SF

**YEAR BUILT:** 1933

**ZONING:** B-1-3

**MARKET:** Avondale / Logan Square

**CROSS STREETS:** Milwaukee, Diversey & Kimball Avenue

---

Robert Jay Friedman  
Senior Vice President, Sales & Leasing  
312.810.7203  
rjfsite@jameson.com

## PROPERTY DESCRIPTION

One retail/office space:

2800 N. Milwaukee Avenue, (4,093 SF)

---

## PROPERTY HIGHLIGHTS

- Rarely available property at the Hairpin Arts Center

---

## AREA AND TRANSPORTATION HIGHLIGHTS

- Multiple bus routes and train routes
-

JAMESON.

## EXTERIOR PHOTOS

2812 N. Milwaukee Avenue, Chicago, IL 60618

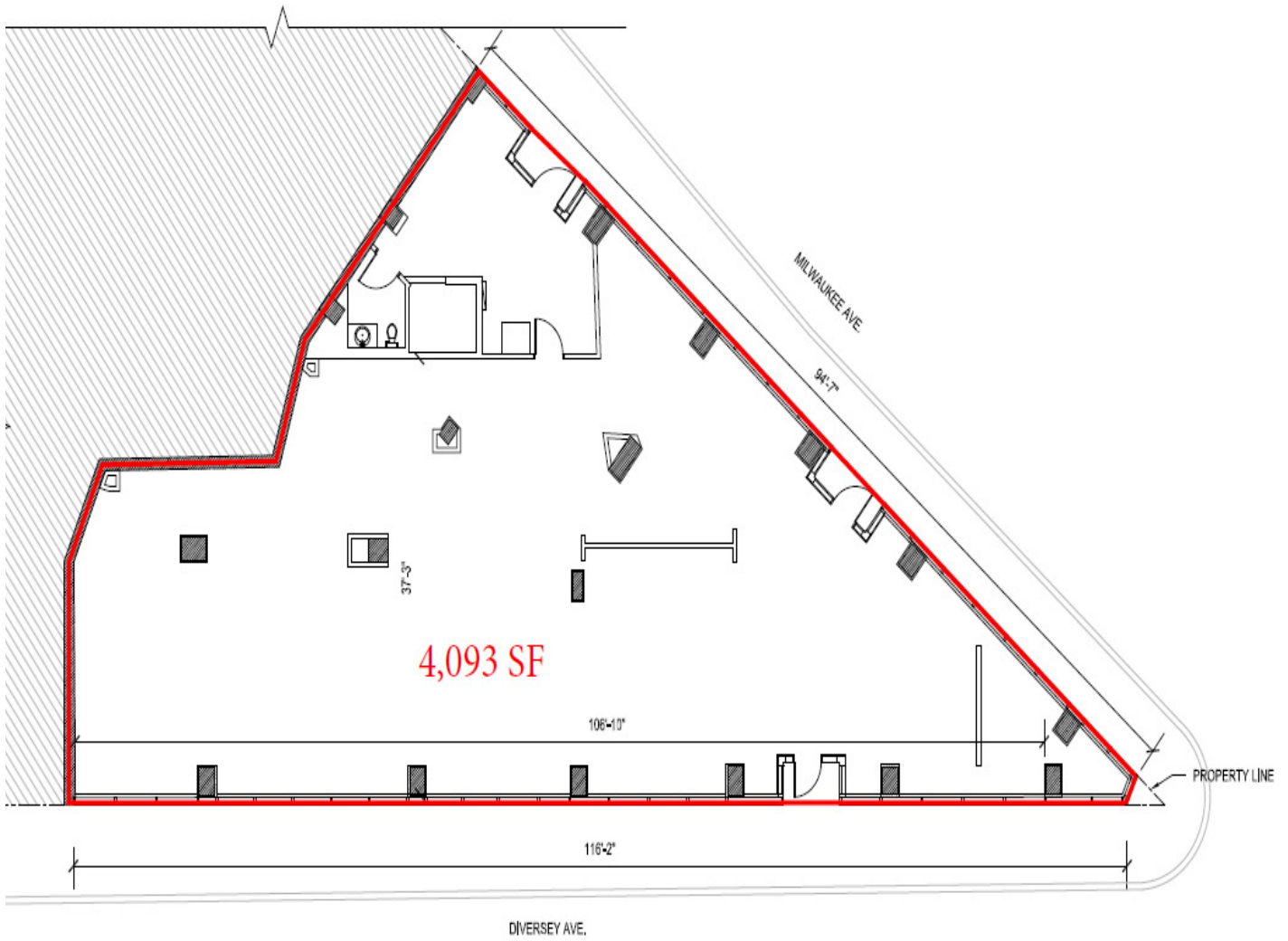
[Inquire](#)




# FLOOR PLAN

2812 N. Milwaukee Avenue, Chicago, IL 60618

[Inquire](#)



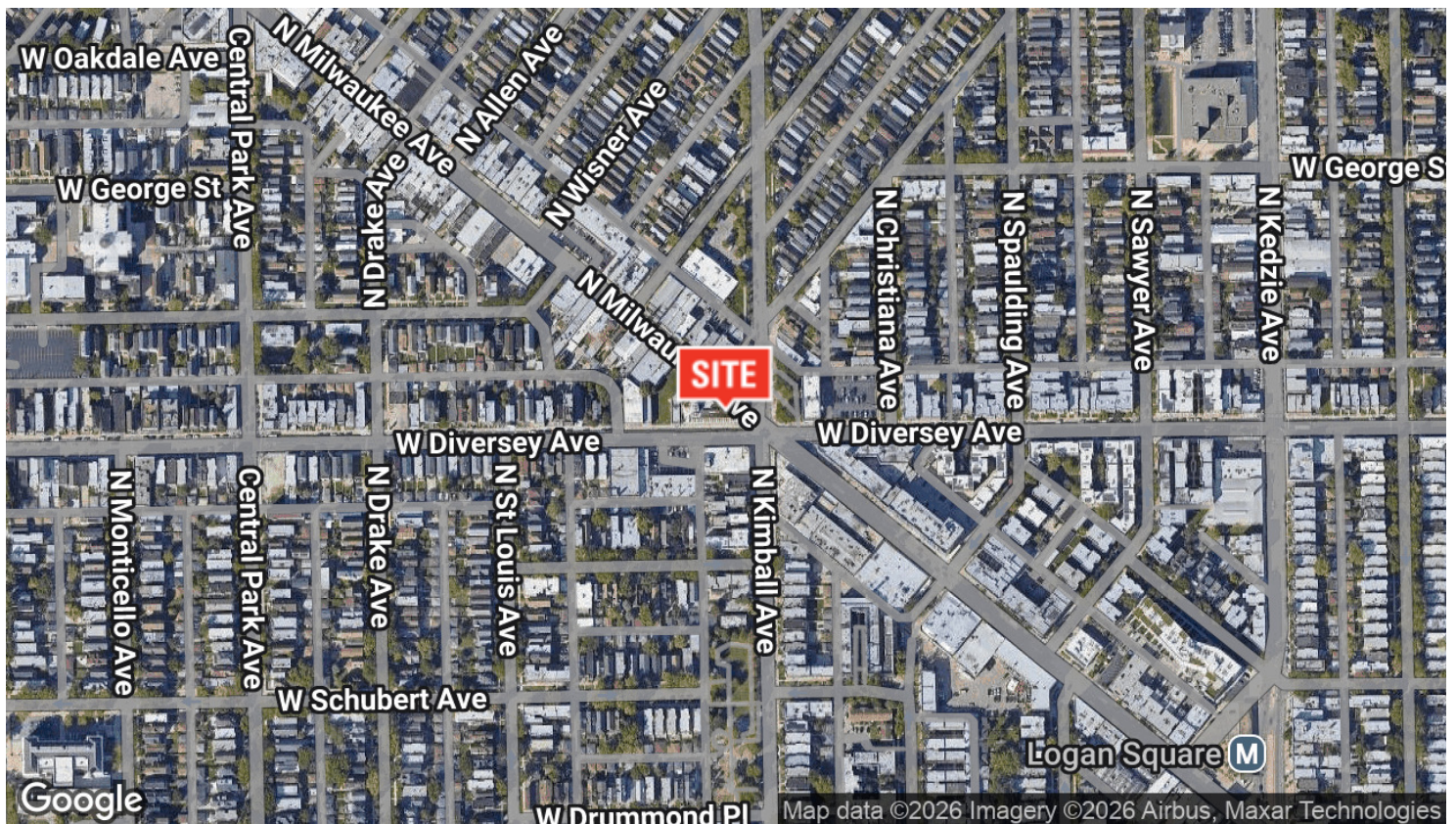
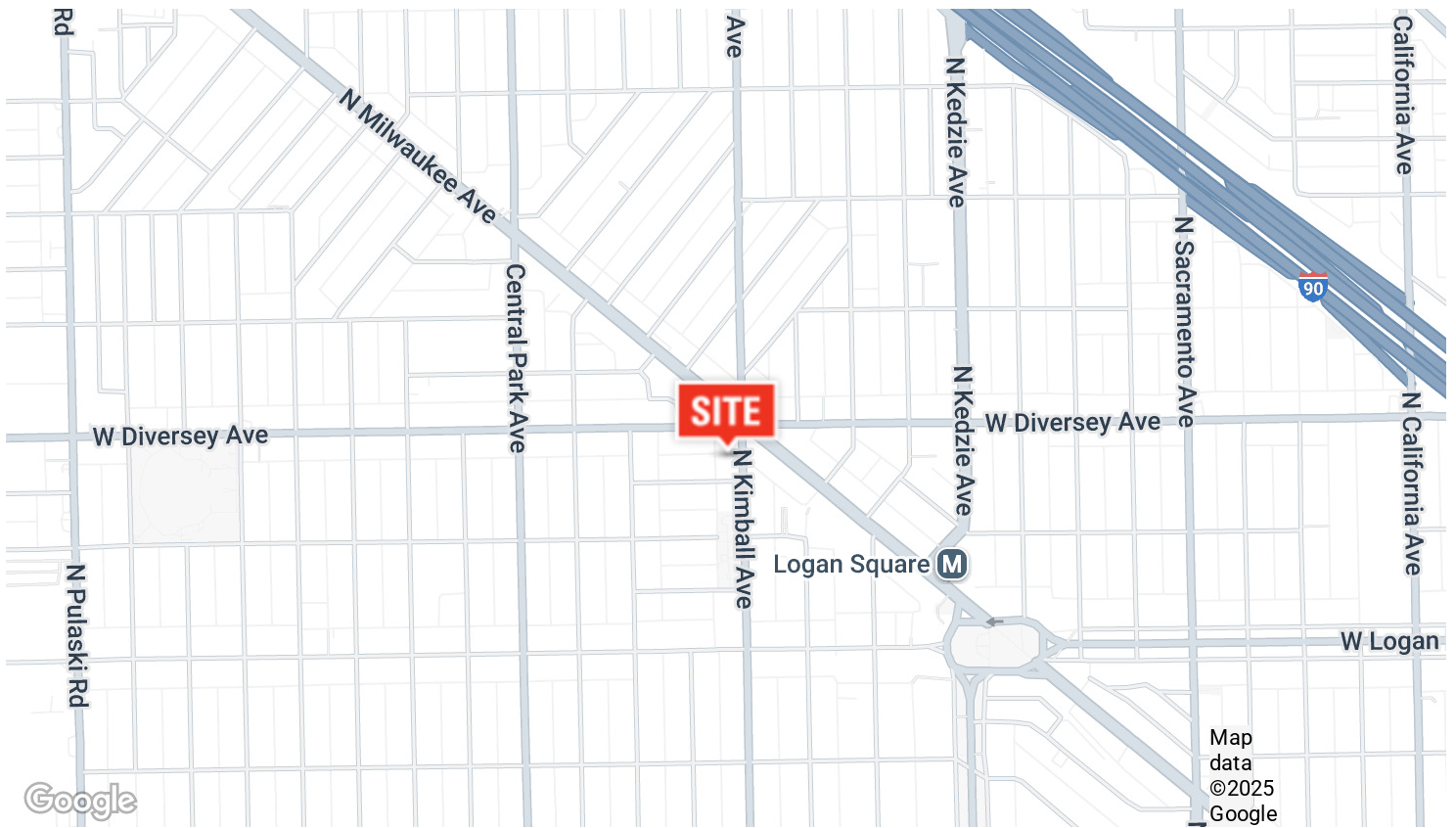
 RENTABLE AREA:  
4,093 SF

FIRST FLOOR  
LEASE PLAN

# AERIAL & STREET DETAIL

2800 N. Milwaukee Avenue, Chicago, IL 60618

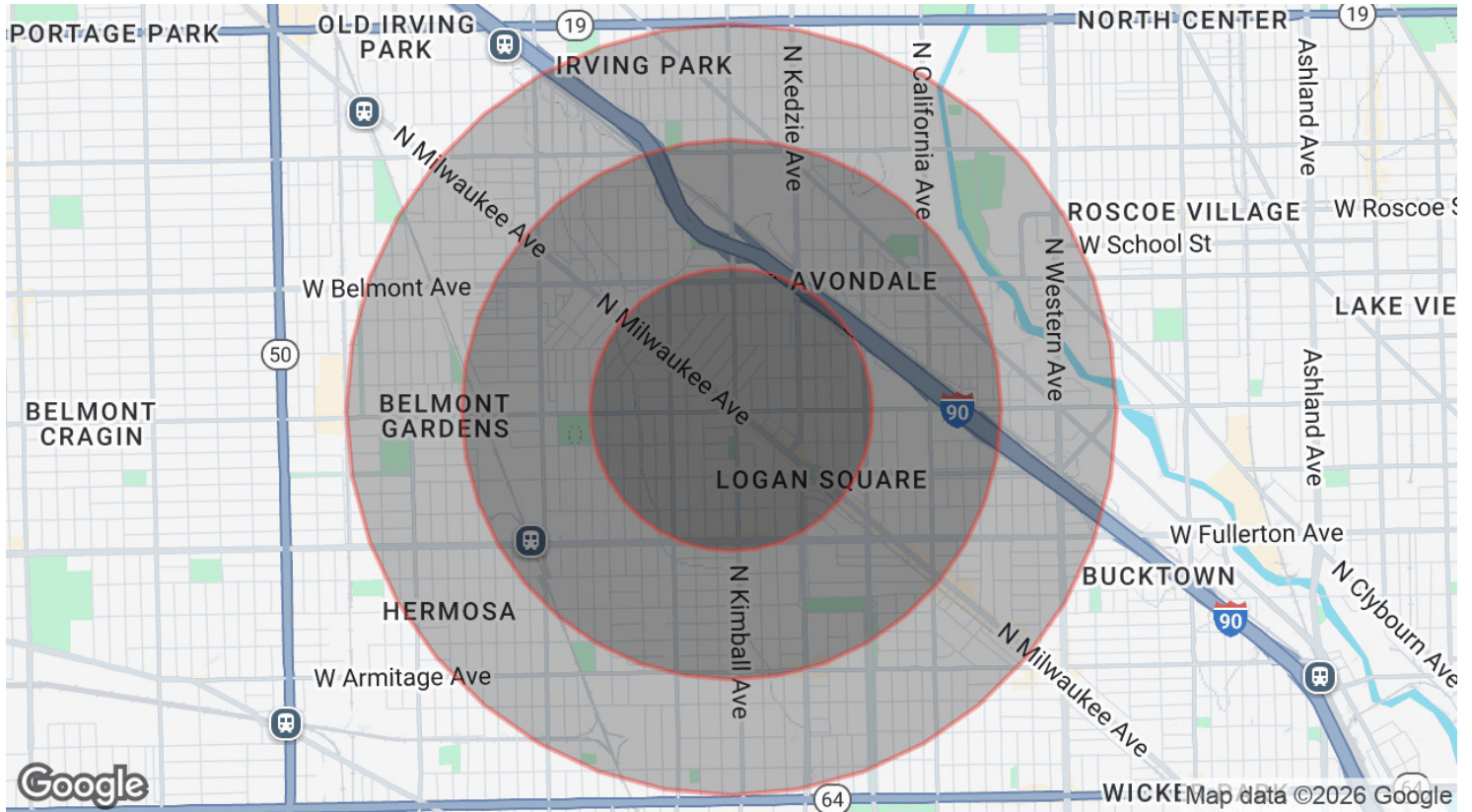
[Inquire](#)



# DEMOGRAPHICS MAP & REPORT

2800 N. Milwaukee Avenue, Chicago, IL 60618

[Inquire](#)



## POPULATION

	0.55 MILES	1.05 MILES	1.5 MILES
Total Population	27,304	84,888	152,478
Average age	31.1	31.5	32.1
Average age (Male)	30.7	31.3	31.9
Average age (Female)	32.0	32.3	32.7

## HOUSEHOLDS & INCOME

	0.55 MILES	1.05 MILES	1.5 MILES
Total households	10,047	30,673	54,330
# of persons per HH	2.7	2.8	2.8
Average HH income	\$55,524	\$56,222	\$57,378
Average house value	\$371,015	\$377,212	\$382,241

\* Demographic data derived from 2020 ACS - US Census