

# NEXT GEN OFFICES



## ABOUT US

NextGen Offices is a modern, professionally furnished packaged office space with affordable long-term or flexible month-to-month rental options. We offer private offices and meeting spaces, along with amenities designed around the way you work.

We provide you with an ideal place to get work done, meet clients and expand your network, and we commit ourselves to your success with a full-time community manager dedicated to helping you grow your business by connecting you with other NextGen clients and partner companies.

For more information or to schedule a tour, contact us today!

## OUR SERVICES

- > Free Customer Parking
- > Flexible Rental Options
- > Furnished Offices
- > IT Support Team
- > High Speed Internet
- > Community Manager
- > Boardrooms
- > Janitorial Services
- > 24/7 Surveillance
- > Professional Receptionist
- > Complementary Tea/Coffee
- > Fully equipped Kitchen
- > Printer, Copier, Scanner & Fax
- > Message/Phone Services
- > Mail & Courier Collection
- > Voicemail
- > Mail Notification

Your Representative:  
S. Darren Johnston  
Office: (604) 558-5410  
Email: [info@nextgenoffices.com](mailto:info@nextgenoffices.com)

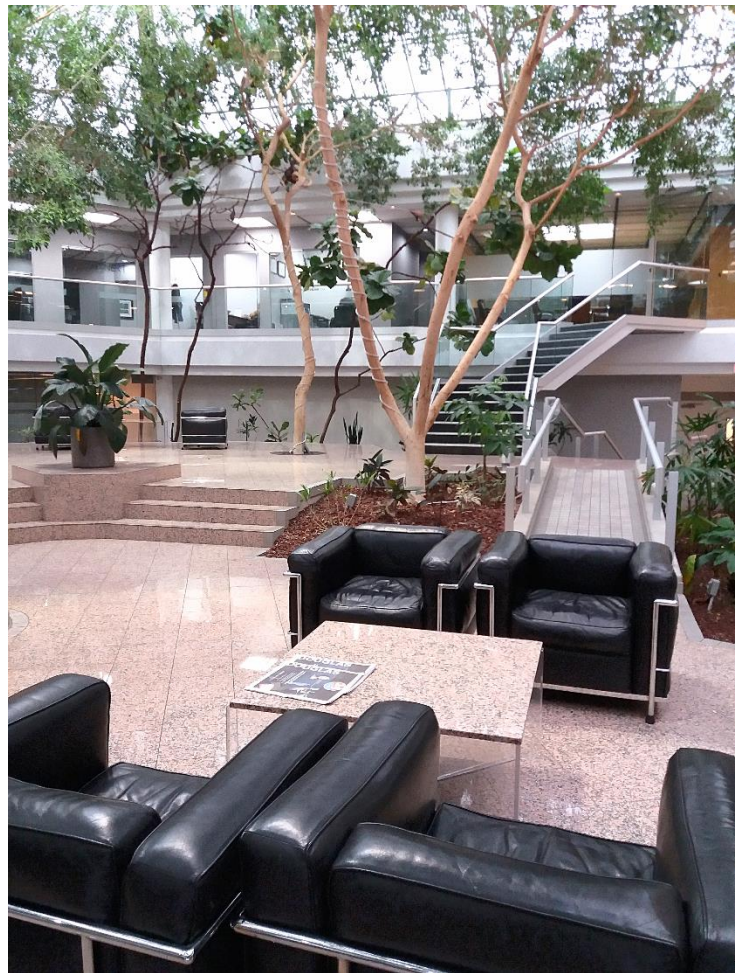
(604) 558-5410

[nextgenoffices.com](http://nextgenoffices.com)

4388 Still Creek Drive  
Burnaby, BC, V5C 6C6



NEXT GEN OFFICES



(604) 558-5410

[nextgenoffices.com](http://nextgenoffices.com)

4388 Still Creek Drive  
Burnaby, BC, V5C 6C6

## AVAILABLE OFFICES AND PRICING

OFFICE NUMBER	OFFICE DESCRIPTION	Sq. ft.	Lowest Price
207	Window Office, reasonable for 1-2 people, available August 1 <sup>st</sup>	94	\$800
210	Interior Office, reasonable for 1-2 people	110	\$750
212	Interior Office, reasonable for 1-2 people	114	\$750
214	Interior Office with Blinds, reasonable for 1-2 people	114	\$750
229	Atrium View Office, reasonable for 1-2 people	114	\$900
234	Atrium View Office, reasonable for 1-3 people	141	\$1100
235	Atrium View Office, reasonable for 1-3 people	141	\$1100

Plus 5% GST

### Our Service Package for the offices includes:

- ✓ High Speed 1GB up 1 GB down internet
- ✓ Executive desk furniture package
- ✓ Two hours of boardroom use per month
- ✓ Free tea and coffee



Office Example: Suite 207

# NEXT GEN OFFICES

## Additional Services

> **Printing & Copying**

Black & White \$0.08

Color \$0.17

> **Boardroom Rental\***

Boardroom small (up to 7 people)

Hour	Half Day	Day	Week
------	----------	-----	------

Boardroom large (up to 10 people)

\$25	\$80	\$120	\$480
\$40	\$130	\$200	\$700

\*5% GST will be added

## At no extra cost

- > Contemporary Office Furniture
- > Community Manager
- > Bi-weekly Office Cleaning
- > Wi-Fi Access
- > Digital Lock with personalized access code
- > 1GB up 1GB down

Your perfect office space located at Willingdon Ave and Highway 1, with a short walk to Gilmore or Brentwood Skytrain Station.



