



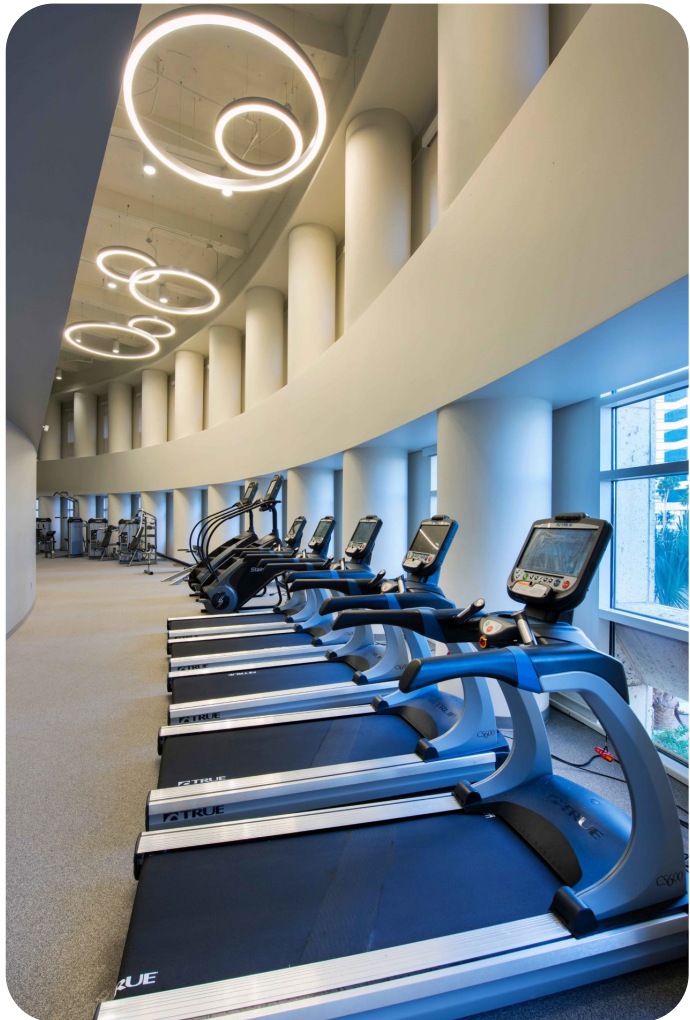
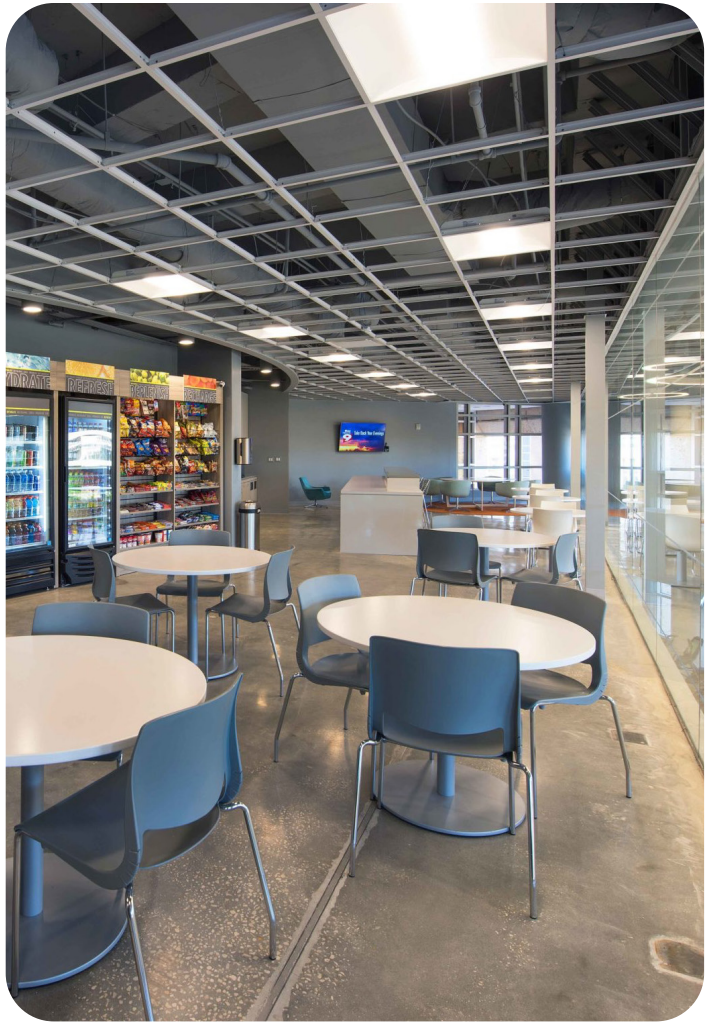
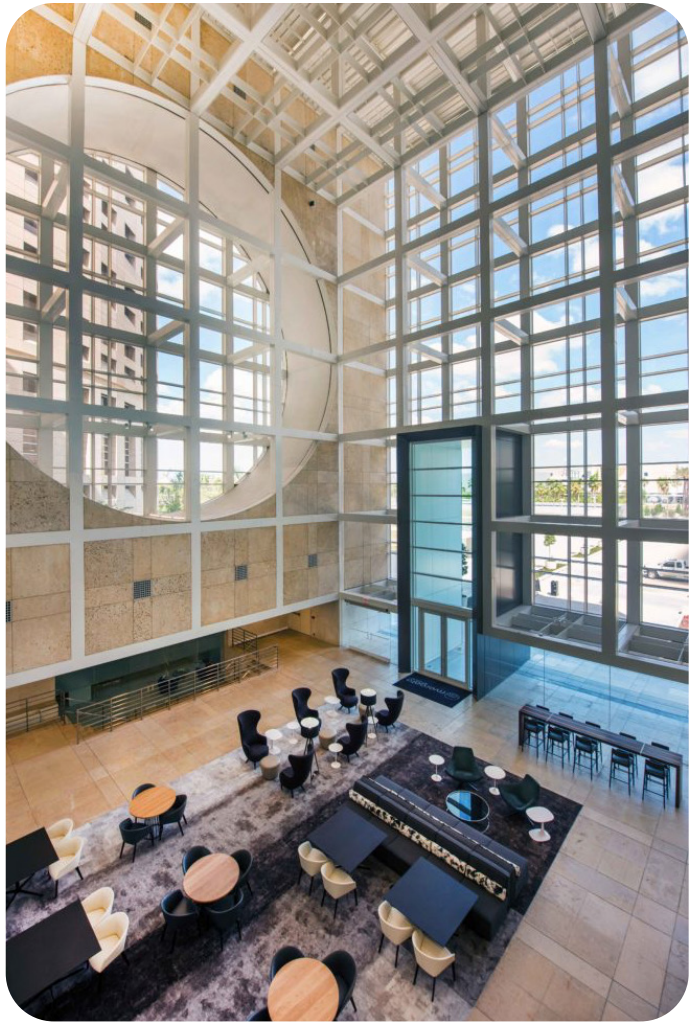
# rivergate tower

400 N Ashley Drive | Tampa, Florida



BANYAN STREET  
CAPITAL







# AN ICON OF THE TAMPA SKYLINE

---

## PRIME DOWNTOWN LOCATION

- On-site parking garage
- Direct access to Tampa Riverwalk
- Unobstructed water views
- Award-winning architecture

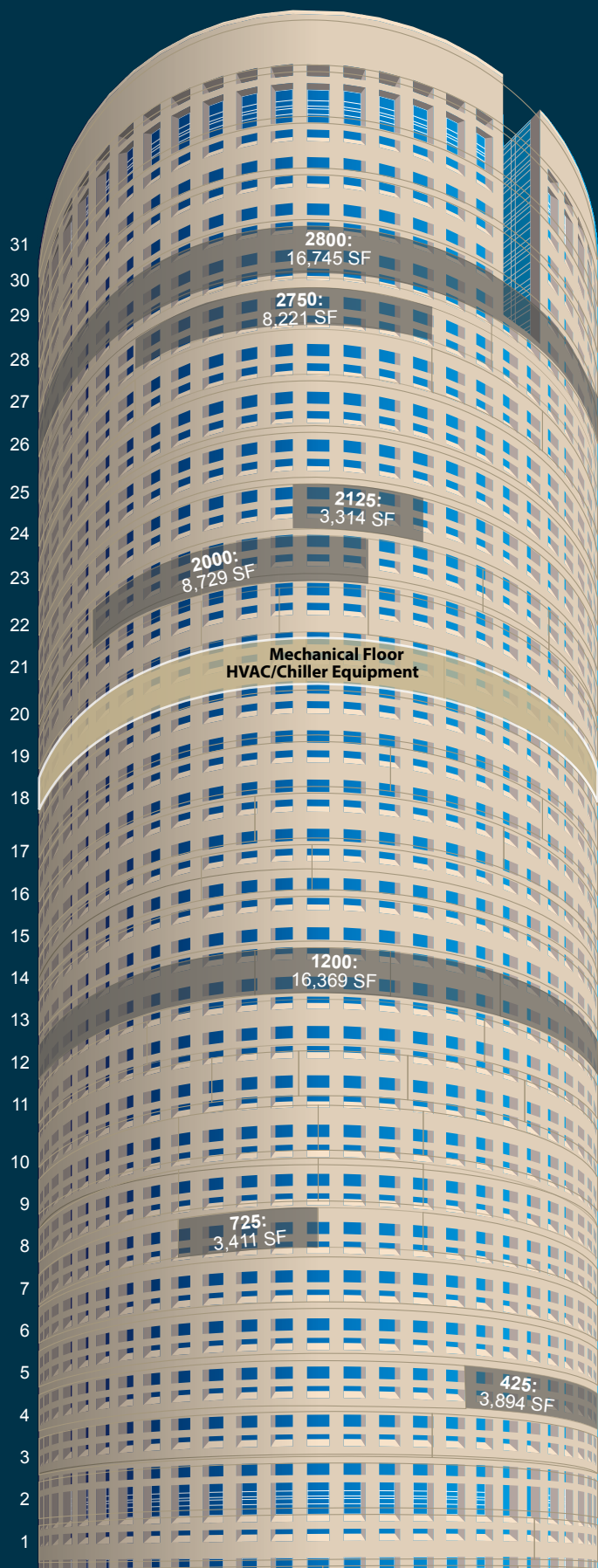
## BUILDING AMENITIES INCLUDE

- State-of-the-art conference facilities
- 7,500 SF fitness/wellness center
- Tenant lounge with grab-n-go
- Malio's Prime Steakhouse located in the tower lobby
- Moxie's Coffee shop in the Cube lobby
- On-site property management
- Valet parking services
- Dry cleaners
- Car wash

**RIVERGATE TOWER**

400 N Ashley Drive | Tampa, Florida

# AVAILABILITIES



SUITE NUMBER	TOTAL SF AVAILABLE	MAXIMUM CONTIGUOUS SF	CLICK TO VIEW FLOOR PLAN
2800 - Full Floor	16,745	24,966	<a href="#">Click to View</a>
2750	8,221	24,966	<a href="#">Click to View</a>
2125	3,314	3,314	<a href="#">Click to View</a>
2000	8,729	8,729	<a href="#">Click to View</a>
1200 - Full Floor	16,369	16,369	<a href="#">Click to View</a>
725	3,411	3,411	<a href="#">Click to View</a>
425	3,894	3,894	<a href="#">Click to View</a>
C-500	4,363	17,452	<a href="#">Click to View</a>
C-400	4,363	17,452	<a href="#">Click to View</a>
C-300	4,363	17,452	<a href="#">Click to View</a>
C-200	4,363	17,452	<a href="#">Click to View</a>
C-115	3,726	3,726	<a href="#">Click to View</a>

# BEYOND THE OFFICE

**22,600+**

Residences within a 1-mile radius

**4,547+**

Hotel rooms, including The Edition at Water Street

**800,000+ SF**

Meeting & convention space within a 1-mile radius

**7,800+**

Multi-family units with an additional  
2,500 currently under construction



**ONLY OFFICE BUILDING  
LOCATED ALONG  
TAMPA'S RIVERWALK**



**4 ACCESS POINTS**  
On & off I-275 & the Selmon  
Crosstown Expressway



## 8 MILES OF PEDESTRIAN PATHS

Linking the Riverwalk district to  
downtown, Harbour Island, Davis  
Island, and South Tampa



## WALKING DISTANCE

To a variety of hotels,  
restaurants, and shopping

**RIVERGATE TOWER**  
400 N Ashley Drive | Tampa, Florida



 SouthState

# CONTACT US:

**MATT ALEXANDER**

*Senior Director*

813.559.2006

[Matthew.Alexander@FranklinSt.com](mailto:Matthew.Alexander@FranklinSt.com)

**CHAD RUPP**

*Executive Managing Partner*

813.345.5891

[Chad.Rupp@FranklinSt.com](mailto:Chad.Rupp@FranklinSt.com)



**BANYAN STREET**  
CAPITAL



[RIVERGATETOWER.COM](http://RIVERGATETOWER.COM)

No warranty or representation, expressed or implied, is made to the accuracy of information contained herein, and same is submitted subject to errors, change of price, rental or other conditions, withdrawal without notice, and to any special listing conditions imposed by our principals.