

SOUTH SIERRA PLAZA

±1,211 SF FACING HIGH TRAFFIC SIERRA AVE

10660 Sierra Ave. STE K, Fontana, CA 92337

±1,211 SF  
FOR LEASE

Sierra Ave ±27,082 CPD

MONICA DAL BIANCO - WEST

VP, Retail Leasing & Sales

O: 909.230.4500 | C: 714.483.4682

monica@progressiverep.com

DRE #01878514

PROGRESSIVE  
REAL ESTATE PARTNERS

## Presented By



**MONICA DAL BIANCO - WEST**  
VP, Retail Leasing & Sales

**T** 909.230.4500 | **C** 714.483.4682  
monica@progressiverep.com  
CalDRE #01878514

## Confidentiality & Disclaimer

### EACH PARTY SHALL CONDUCT ITS OWN INDEPENDENT INVESTIGATION AND DUE DILIGENCE

Any party contemplating a lease or sale transaction is urged to verify all information and to conduct their own inspections and investigations including through appropriate third party independent professionals selected by such party.

All financial data, building information, zoning information, demographics, and other information that a tenant or buyer may depend upon for making their business decisions should be verified and confirmed by the party including by obtaining and reading applicable documents and reports and consulting appropriate independent professionals. Any information contained in this marketing brochure was obtained from sources that we deemed reliable. While we do not doubt its accuracy, we do not make any guaranty, warranty, or representation about the accuracy of the information contained herein.

Progressive Real Estate Partners does not serve as a financial or business advisor to any party regarding any proposed transaction.

Legal questions should be discussed by the party with an attorney. Tax questions should be discussed by the party with a certified public accountant or tax attorney. Title questions should be discussed by the party with a title officer or attorney. Questions regarding the condition of the property and whether the property complies with applicable governmental requirements should be discussed by the party with appropriate engineers, architects, contractors, other consultants and governmental agencies.

Materials and information from any source, whether written or verbal, that may be furnished for review are not a substitute for a party's active conduct of its own due diligence to determine these and other matters of significance to such party.

# PROPERTY OVERVIEW

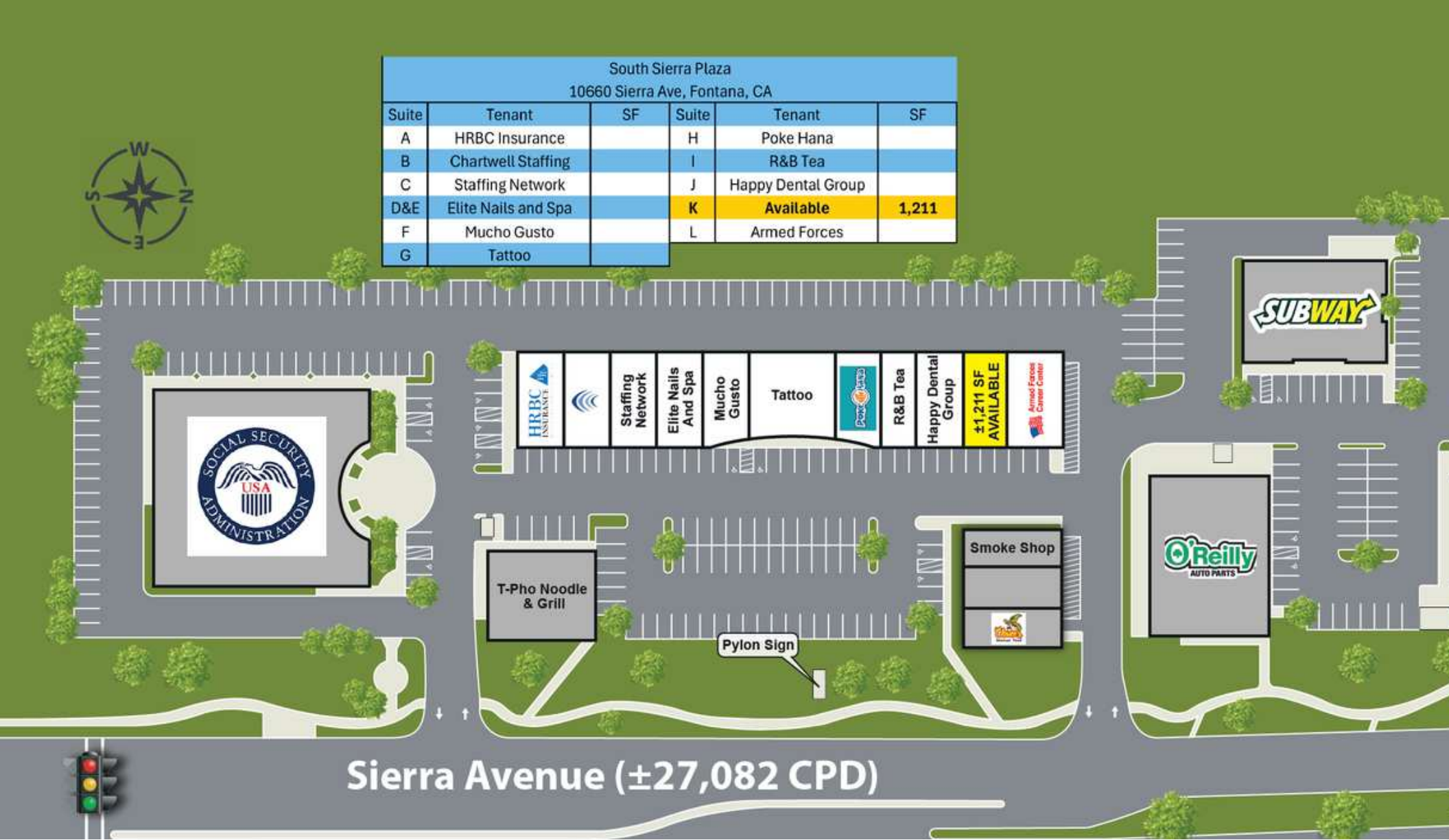


## HIGHLIGHTS

- ±1,211 SF Retail Space Available for Lease
- Excellent visibility from Sierra Ave with ±27,082 cars per day.
- Solid daytime population with over 22,572 workers and an overall population of 115,431 within a 3-mile radius of the property.
- Join neighboring tenants such as: Target, 24 Hour Fitness, TJ Maxx, Ross, AutoZone, Kaiser Permanente, Hilton Garden Inn and many more!

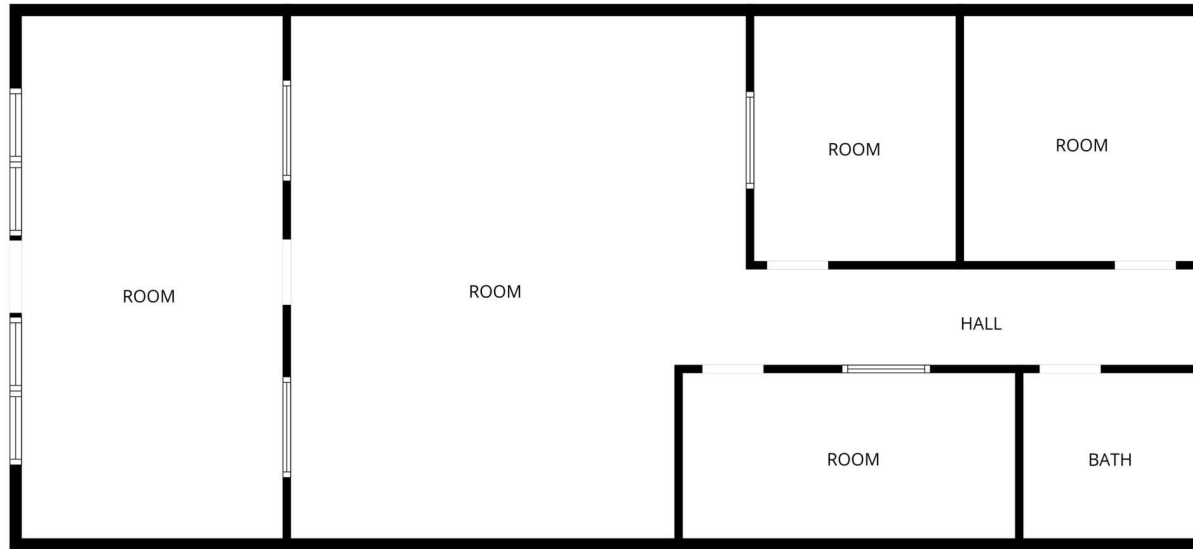
# SITE PLAN

South Sierra Plaza 10660 Sierra Ave, Fontana, CA					
Suite	Tenant	SF	Suite	Tenant	SF
A	HRBC Insurance		H	Poke Hana	
B	Chartwell Staffing		I	R&B Tea	
C	Staffing Network		J	Happy Dental Group	
D&E	Elite Nails and Spa		K	Available	1,211
F	Mucho Gusto		L	Armed Forces	
G	Tattoo				



Sierra Avenue (±27,082 CPD)

# SUITE K (±1,211 SF) - FLOOR PLAN & INTERIOR PHOTOS



# CLOSE UP AERIAL



# RETAILER MAP



# ADDITIONAL PHOTOS



# DEMOGRAPHICS

	1 mi	3 mi	5 mi
<b><u>POPULATION</u></b>			
2025 Total Population	8,652	115,431	310,210
2025 Total Households	3.7	3.9	3.8
2025 Average Household Size	2,305	29,812	81,417
2025 Median Age	33.2	31.5	32.1
<b><u>INCOME</u></b>			
2025 Average Household Income	\$109,208	\$105,973	\$110,062
2025 Median Household Income	\$94,678	\$88,895	\$91,639
2025 Per Capita Income	\$29,176	\$27,416	\$28,951
<b><u>BUSINESS SUMMARY</u></b>			
2025 Total Businesses	572	2,927	7,900
2025 Total Employees	4,546	22,572	73,509