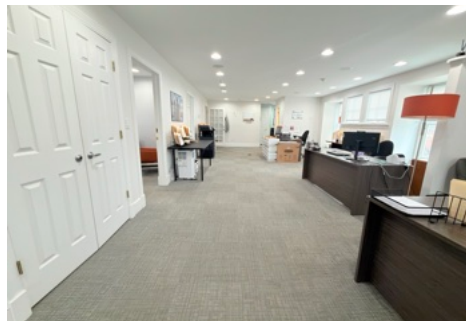


1650 Route 9 Clifton Park

Prime Office Space Available



1200 SqFt Commercial Office Space for Rent

- High Visibility - Busy Route 9 Business Corridor
- \$21/SF/YR, Utilities Included
- Recently Renovated
- Open Floorplan - Offices & Conference Room
- Kitchenette + Bathroom
- 10+ Parking Spaces - Snow plowing included
- 2nd Floor Office Space
- Landscaping and Common Space Maintenance Provided
- Some Furnishing Available Upon Request

Contact Info: 518-852-9277, Email: coordination@ambiancesystems.com