

Gateway Plaza

3370 PEORIA STREET, UNIT 200-201
AURORA, CO 80010

LEASING INCENTIVES
AVAILABLE



INDUSTRIAL SPACE > FOR LEASE

ACCESS VIA
I-70 & PEORIA ST.

LOCATED WITHIN WALKING
DISTANCE OF LIGHT RAIL
STATION & 10 MINUTES TO
FITZSIMONS CAMPUS

PEORIA STREET
FRONTAGE

- > Project Size: 123,827 SF
- > Available: Immediately
- > Unit Size: 2,730-5,793 SF
- > Office Size: 30%
- > Rate: \$9.50/SF
- > Est. 2026 OpEx: \$6.41/SF
- > Parking: 1.89:1,000 SF
- > Loading: Up to Two (2) Dock High
- > Ceiling Height: 14'-16'
- > Zoning: M-1
- > Electric Service: 3-Phase
- > City/County: Aurora/Adams

DEPAUL
Real Estate Advisors



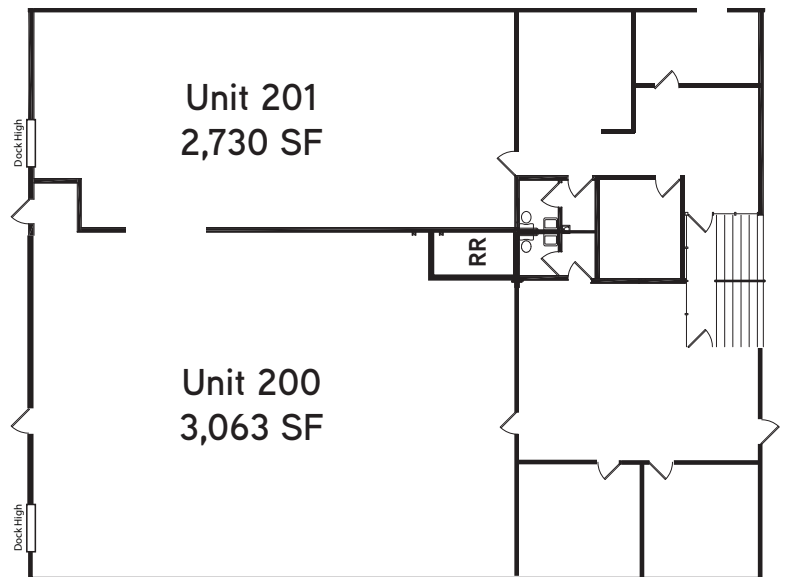
MATT KEYERLEBER
720 284 7100
matt.keyerleber@colliers.com

T.J. SMITH, SIOR
303 283 4576
tj.smith@colliers.com

NICHOLAS NASHARR
303 283 4563
nicholas.nasharr@colliers.com

Gateway Plaza

UNIT 200-201 | 2,730-5,793 SF



DEPAUL
Real Estate Advisors



4643 South Ulster Street | Suite 1000 | Denver, CO 80237
MAIN +1 303 745 5800 FAX +1 303 745 5888

www.colliers.com/denver

Broker
Disclosure

