


# GRIMES FLEX/INDUSTRIAL BUILDING

3400 SE Crossroads Drive  
Grimes, Iowa 50111

**FOR LEASE**



 Flex/Industrial in the NE quadrant of busy Highway 141 and 37th street in Grimes, Iowa. Built in 2022, this building is in excellent condition for a new occupier. Ideal for flooring company, commercial/home builder, furniture store, or other user with a showroom, office space, and warehousing need. Call to schedule a showing today!

- 20,000 SF Available (May divide)
  - 6,000 sf finished showroom, office space, conference & breakroom
- Available Immediately
- Fully heated and cooled throughout
- 18' clear height, 100' Building Depth, 24' column width, 1200 amp service
- 3 Rear drive In's 12' W X 14' H
- Building & Monument Signage (Visible from Hwy 141)
- For Lease: Contact Agent
- Estimated Operating Expenses: \$5.60/sf



## CONTACT

**Ryan D. Siedenbueg**

(515) 339-9616 Mobile

(515) 223-6222 Office

[Ryan@Siedenbueg.com](mailto:Ryan@Siedenbueg.com)

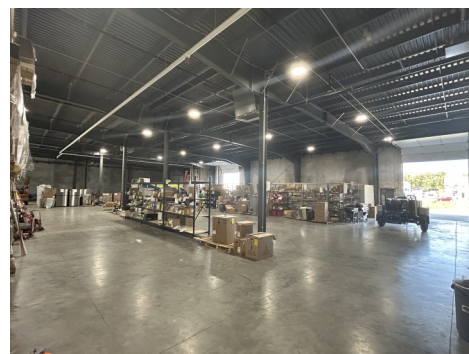
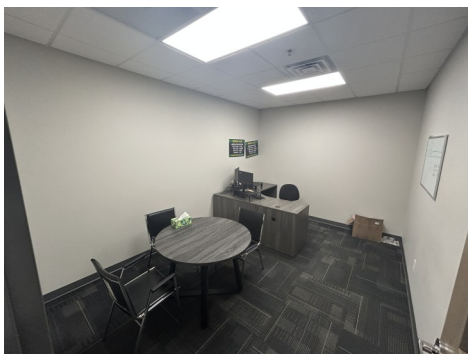
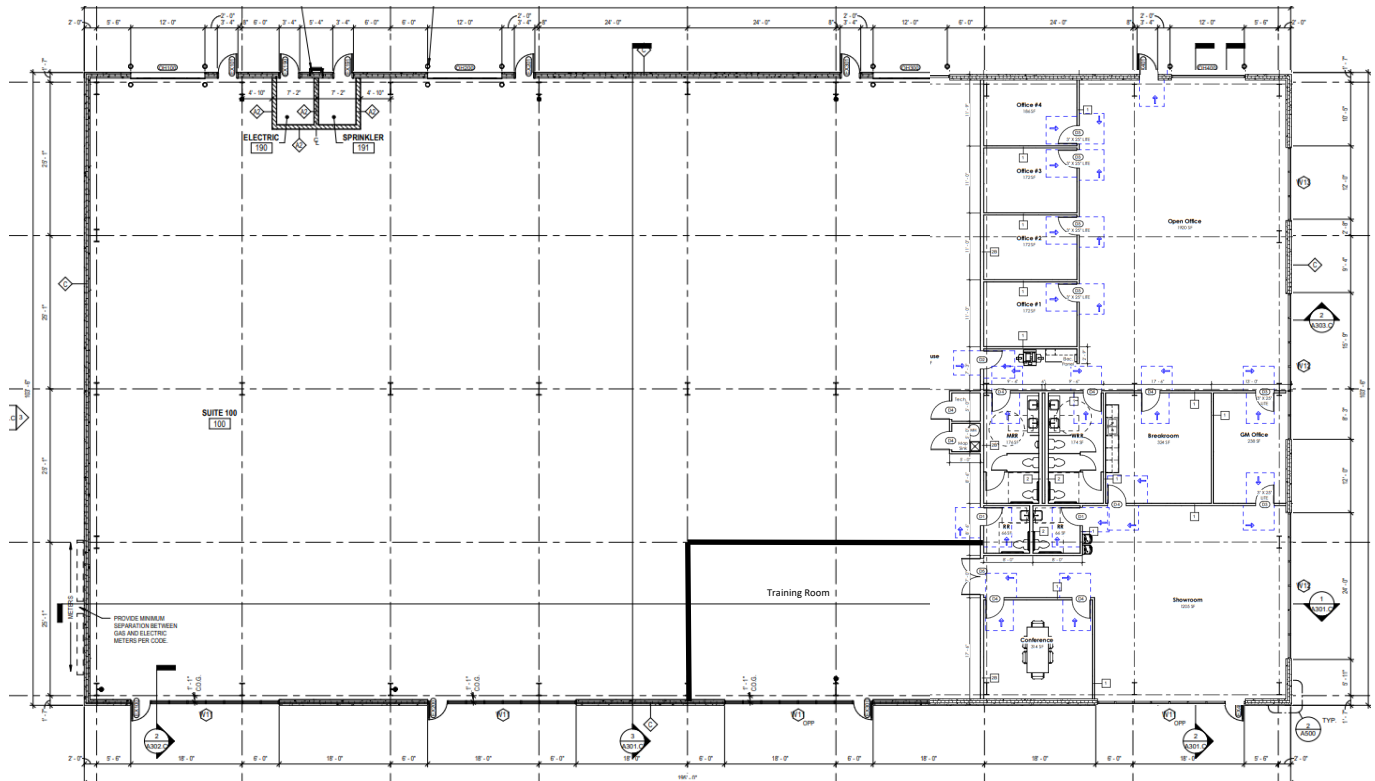
2026 V.1



# GRIMES FLEX/INDUSTRIAL BUILDING

3400 SE Crossroads Drive  
Grimes, Iowa 50111

**FOR LEASE**



**The Siedenburgh Group**  
1350 NW 138th Street, Suite 450  
Clive, Iowa 50325  
www.siedenburgh.com



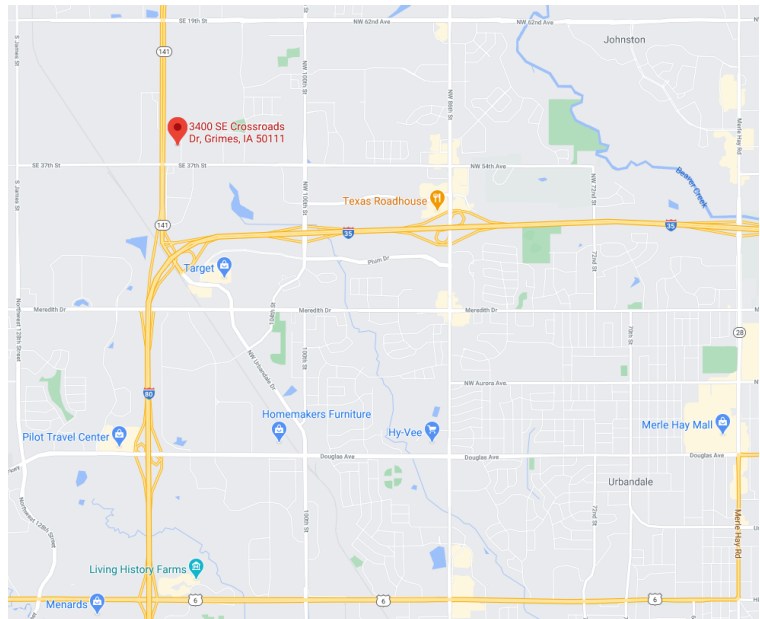
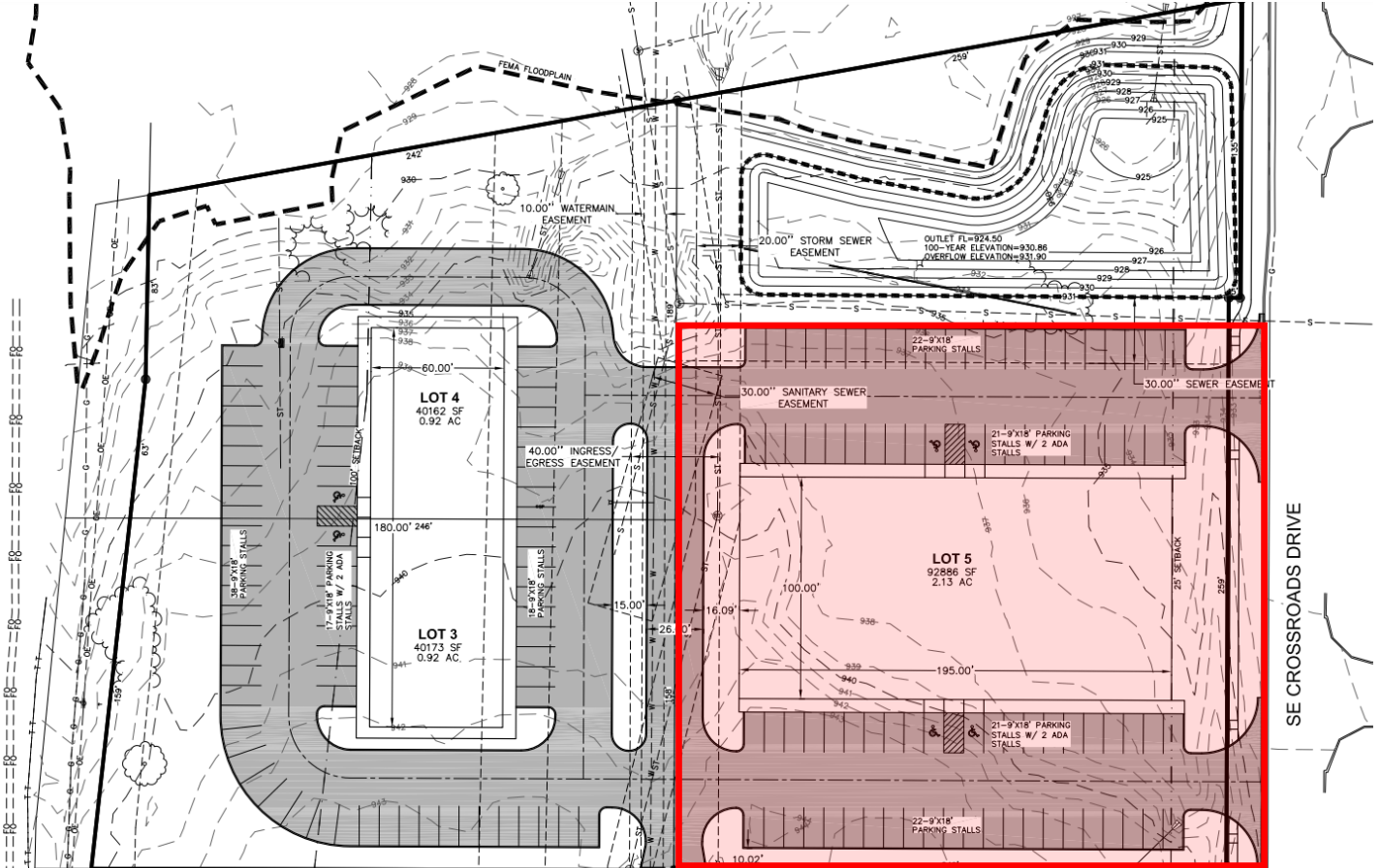
We obtained the information herein from sources we believe to be reliable but is not warranted as to accuracy and may change or be updated without notice.

# GRIMES FLEX/INDUSTRIAL BUILDING

3400 SE Crossroads Drive  
Grimes, Iowa 50111

**FOR LEASE**

## Site Layout



**The Siedenbueg Group**  
1350 NW 138th Street, Suite 450  
Clive, Iowa 50325  
www.siedenbueg.com



We obtained the information herein from sources we believe to be reliable but is not warranted as to accuracy and may change or be updated without notice.