

FOR LEASE

111 ELLIS DRIVE

BARRIE, ON

OUTSIDE STORAGE

CRANE RAILS

POWER



100,096 SF Available with ± 3 Acres Excess Land



PROPERTY HIGHLIGHTS

Total Size:	93,051 SF - Industrial 7,045 SF - Office <hr/> 100,096 SF - Total
Land Size:	7.42 Acres (\pm 3 acres excess)
Clear Height:	24' - 38' (Peaked Roof)
Shipping:	3 TL & 8 DI (More Doors Can Be Added)
Power:	1200A / 600V
Zoning:	GI - General Industrial (Outside Storage)
Lease Rate:	\$16.50 PSF Net
TMI:	\$3.50 PSF
Availability:	May 1, 2026 (Earlier occupancy available for half / whole building)

Comments:

- One of a kind Freestand building with over \pm 3 acres excess land zoned for outside storage (Landlord to pave/gravel excess land)
- Large 7.4 acre lot can accommodate 85 trailer parking and/or material storage
- Functional warehouse that is 100% Air-conditioned
- Heavy 1200A/600V power and LED lighting
- Heavy duty steel support beams and 60' wide bays accommodates both overhead & jib cranes
- Air lines, bus ducts and power drops throughout
- Shipping doors on both front and back of building for ease of product movement (more doors can be added as needed)
- Quick access to Hwy 400, large employment base & ample amenities



AERIAL

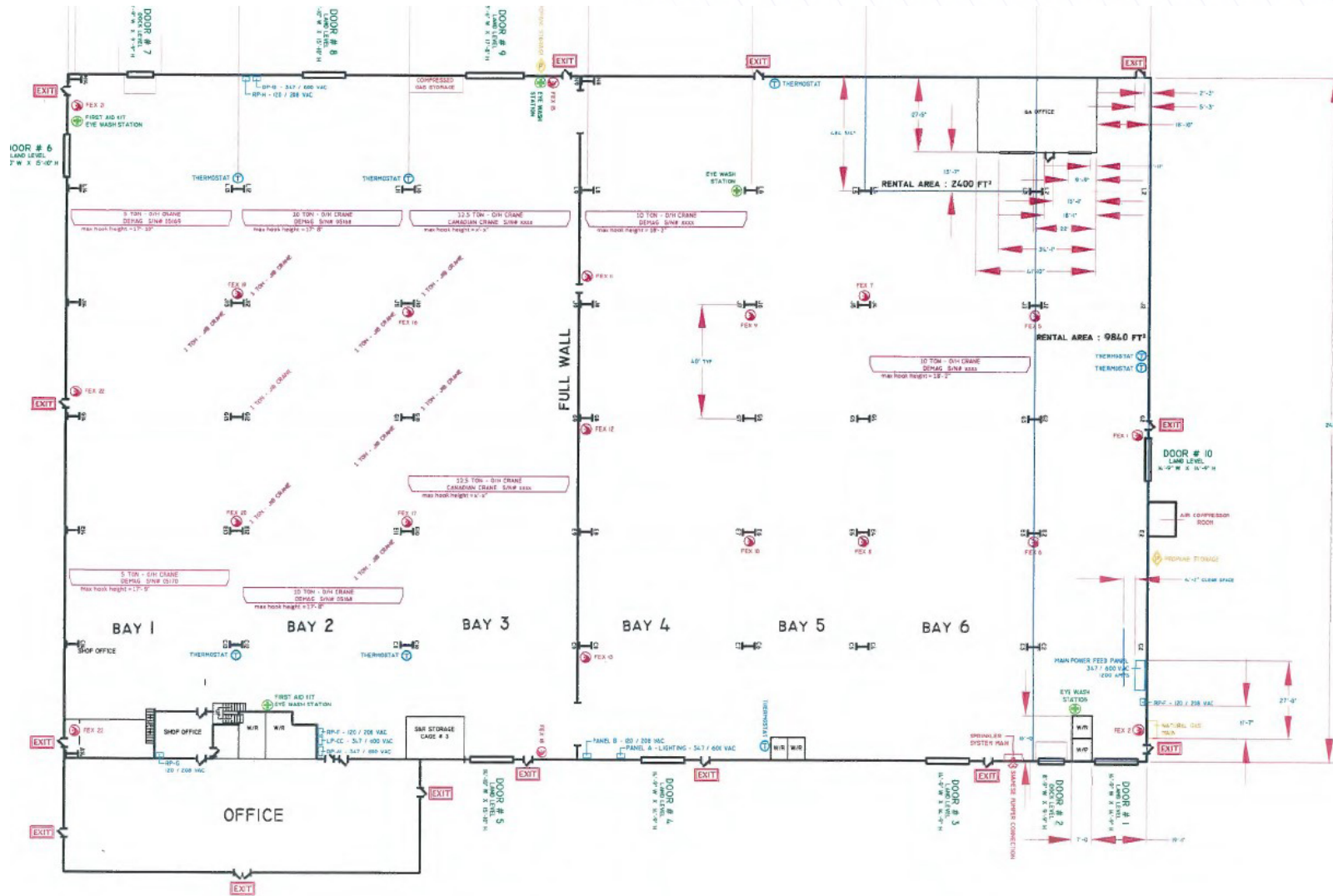


FLOOR PLAN



CRANE INFRASTRUCTURE

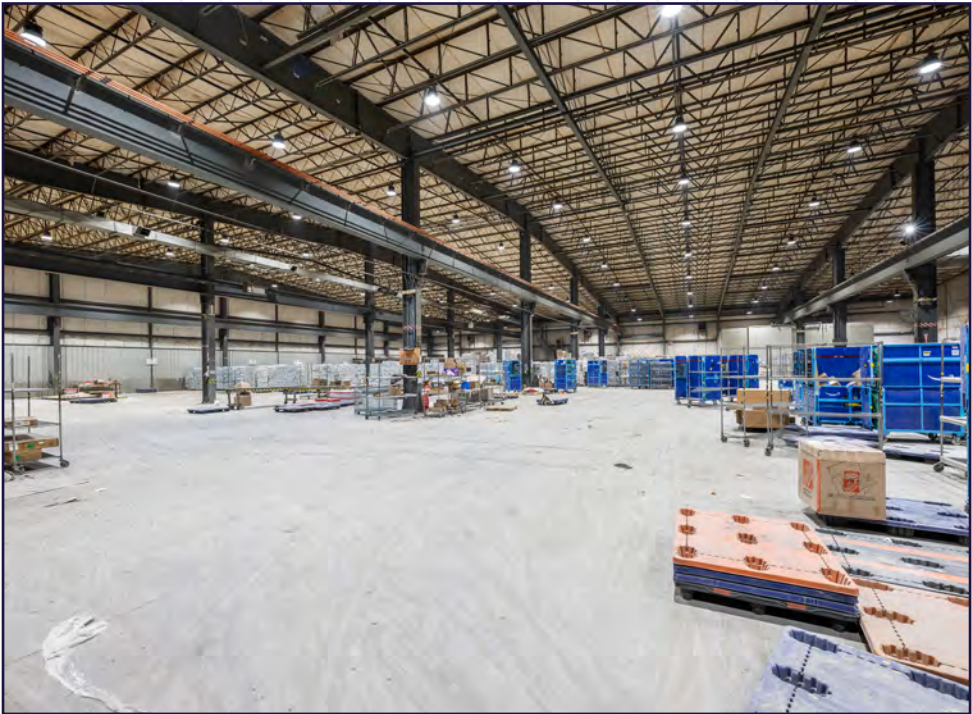
CRANE RAILS LAYOUT



EXTERIOR PHOTOS



WAREHOUSE PHOTOS



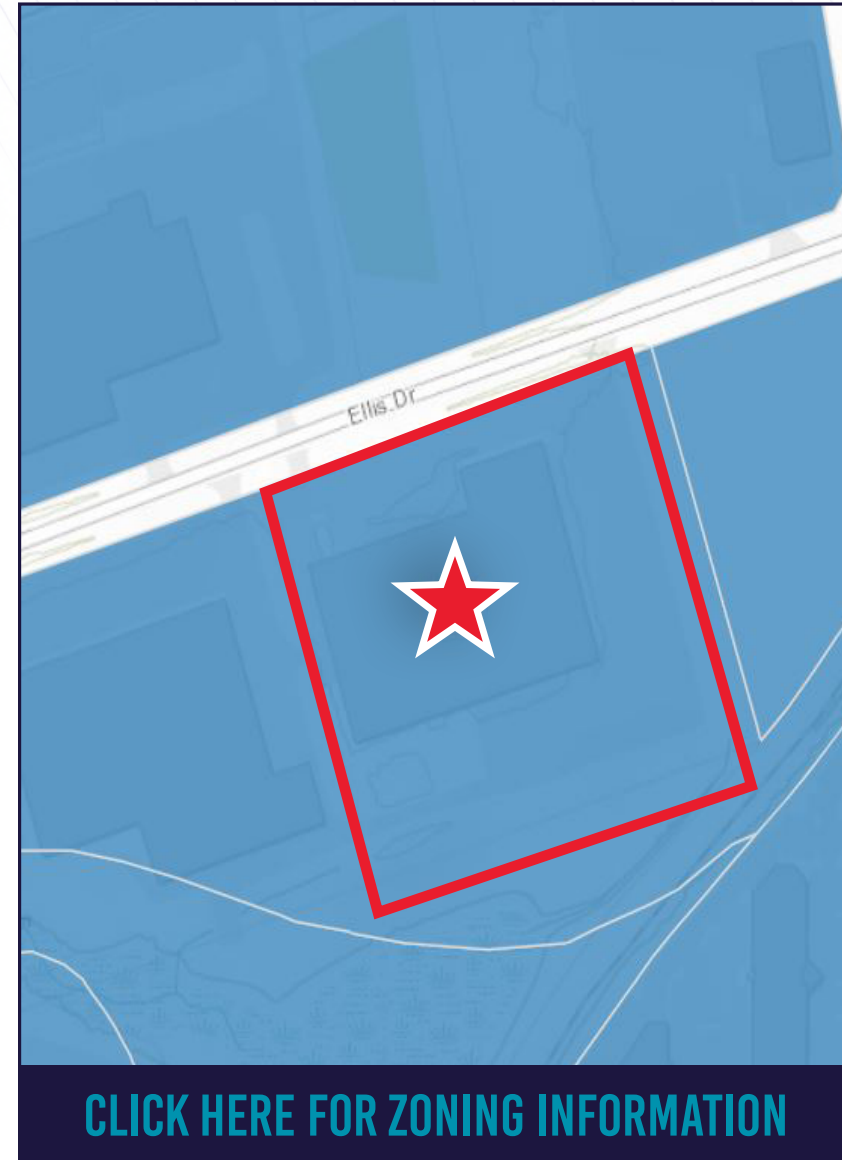
OFFICE PHOTOS



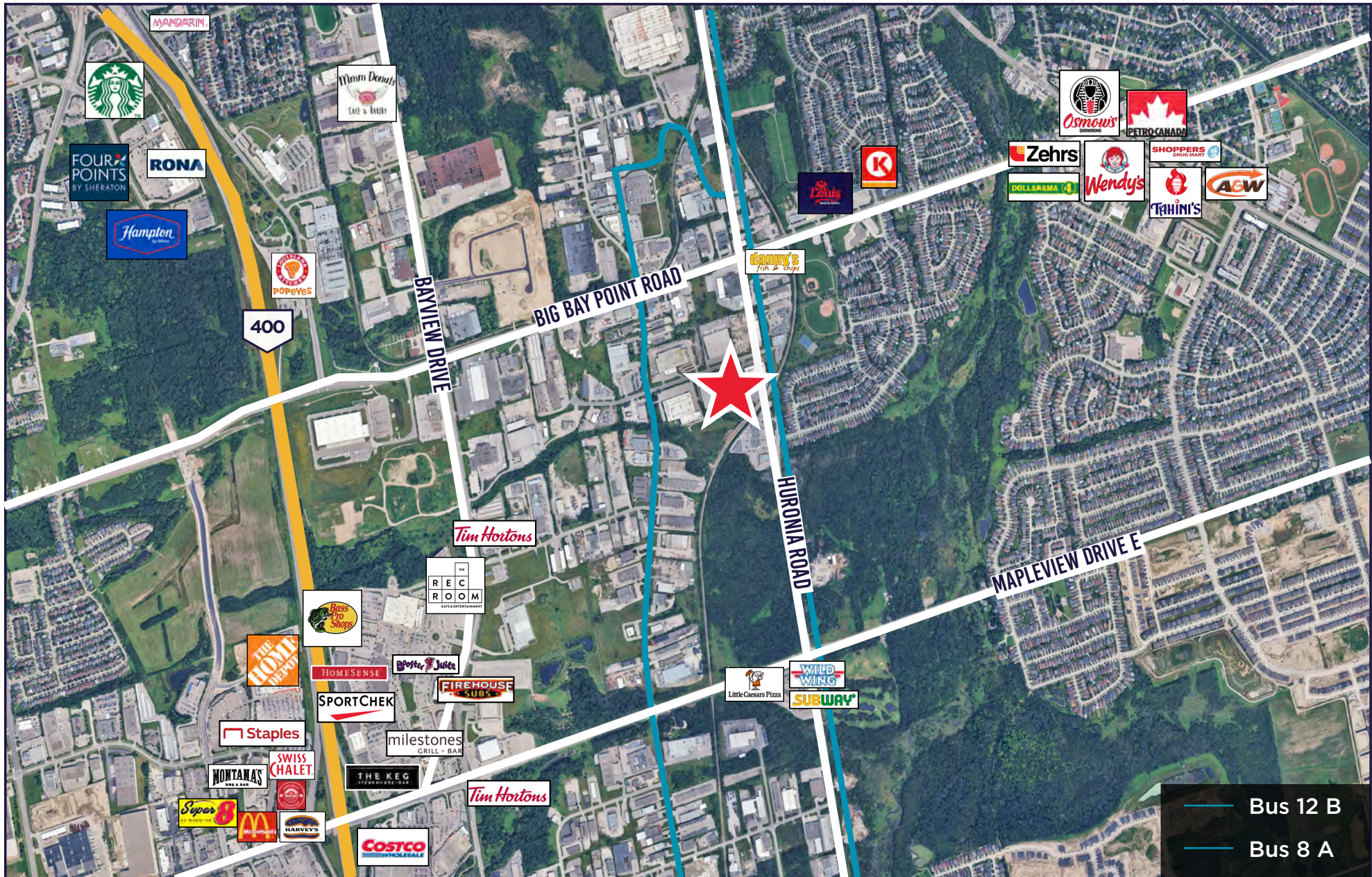
ZONING INFORMATION

The General Industrial (GI) zoning designation in Barrie permits a variety of industrial and related uses. While the specific permitted uses are detailed in the City's Zoning By-law 2009-141, the permitted uses include:

- Animal Shelter
- Bakery
- Concrete Product Manufacturing
- Foundry
- Manufacturing and Processing in Wholly Enclosed Buildings
- Material Recover Facility
- Cannabis Production Facility
- Outdoor Storage
- Printing and Publishing
- Rail Transfer Facility
- Recyclable Materials Transfer Station
- Rental Store
- Research/Development Facility
- Self Storage
- Truck Terminal
- Wholesale Establishment
- Accessory Employee Use
- Accessory Retail
- Adult Entertainment Parlour
- Automotive Repair Establishment
- Building Supply Centre
- Car Wash
- Conference Centre
- Data Processing Centre
- Drive Through Facility
- Dry Cleaning Establishment
- Golf Driving Range
- Nursery
- Office
- Outdoor Display
- Service Store
- Veterinary Clinic



TRANSIT & AMENITIES MAP





For more information, please contact:

RAYMOND RAMNAUTH

Senior Vice President

+1 905 501 6494

raymond.ramnauth@cushwake.com

PRABH RATRA

Senior Associate

+1 905 501 6413

prabh.ratra@cushwake.com

©2025 Cushman & Wakefield. All rights reserved. The information contained in this communication is strictly confidential. This information has been obtained from sources believed to be reliable but has not been verified. NO WARRANTY OR REPRESENTATION, EXPRESS OR IMPLIED, IS MADE AS TO THE CONDITION OF THE PROPERTY (OR PROPERTIES) REFERENCED HEREIN OR AS TO THE ACCURACY OR COMPLETENESS OF THE INFORMATION CONTAINED HEREIN, AND SAME IS SUBMITTED SUBJECT TO ERRORS, OMISSIONS, CHANGE OF PRICE, RENTAL OR OTHER CONDITIONS, WITHDRAWAL WITHOUT NOTICE, AND TO ANY SPECIAL LISTING CONDITIONS IMPOSED BY THE PROPERTY OWNER(S). ANY PROJECTIONS, OPINIONS OR ESTIMATES ARE SUBJECT TO UNCERTAINTY AND DO NOT SIGNIFY CURRENT OR FUTURE PROPERTY PERFORMANCE.

