

±21,536 SF

Industrial Building For Sublease



3215 PRODUCER WAY

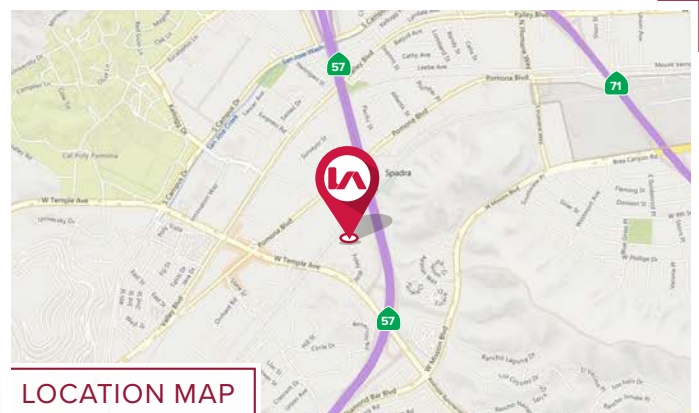
POMONA, CA 91768

PROPERTY HIGHLIGHTS

- 21,536 SF Freestanding Warehouse
- 2,970 SF Office
- 2,303 SF Office Mezzanine
- Three (3) Ground Level Doors
- One (1) External Dock High Loading Ramp
- 400 Amps
- Large Fenced Yard
- Excellent Access to 57, 10, 60 & 71 freeway
- City of Walnut/Industry Adjacent



PROPERTY AERIAL



LOCATION MAP

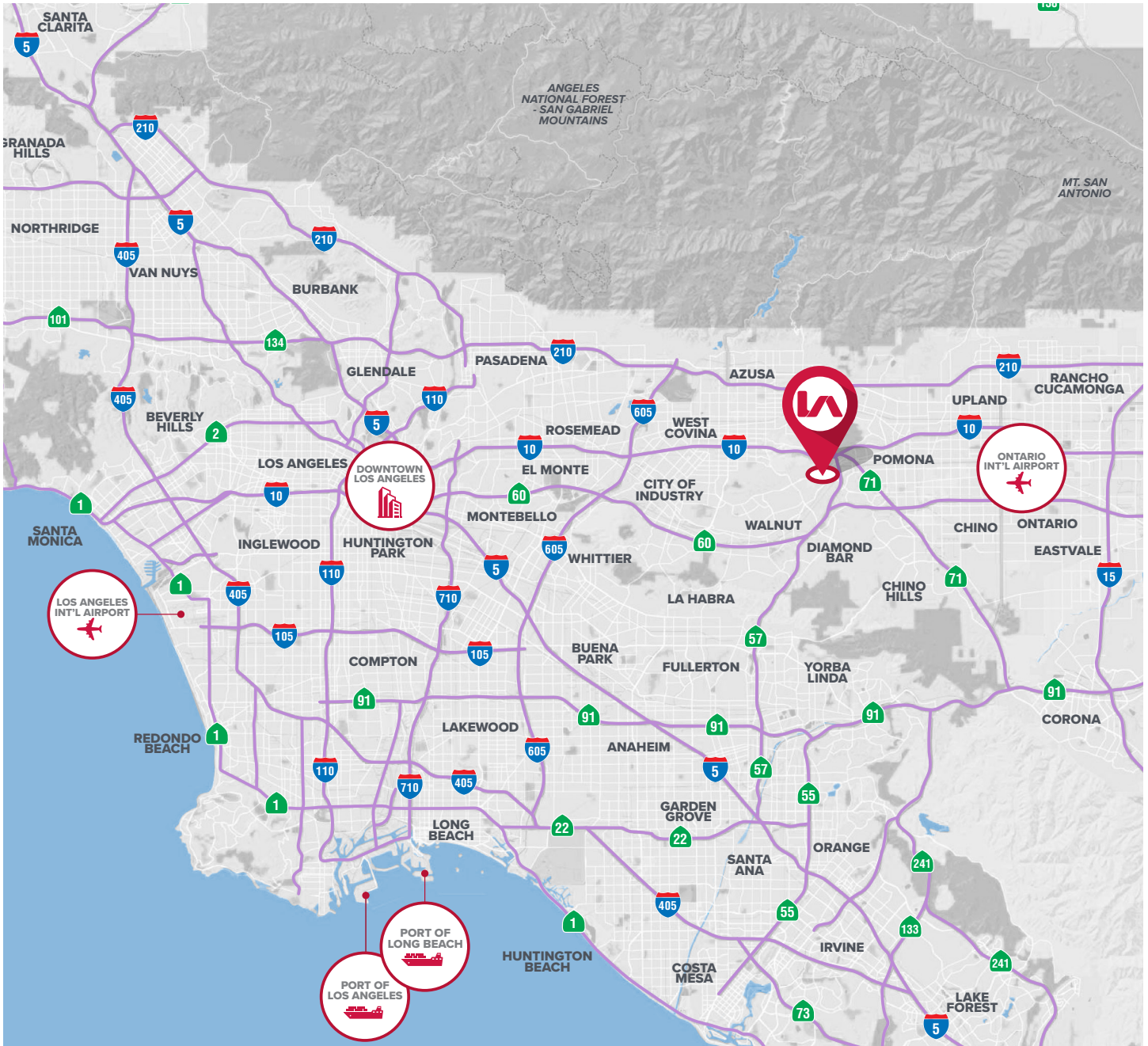
Tai Ngo, CCIM
Senior Vice President | Lic. ID #01779172
(626) 622-9770 | tngo@lee-associates.com

Michael Lee, MBA, CCIM, SIOR
Senior Vice President | Lic. ID #01703179
(562) 568-2018 | mlee@lee-associates.com



Lee & Associates - Industry Inc.
13181 Crossroads Pkwy, N, Suite 300,
City of Industry, CA 91746
(562) 699-7500 | Corp. ID# 01125429

±21,536 SF

Industrial Building For Sublease



REGIONAL MAP

DISTANCE FROM SUBJECT PROPERTY		
	Ontario International Airport (ONT)	15.4 MILES
	Downtown Los Angeles	29.1 MILES
	Port of Long Beach	45.2 MILES
	Port of Los Angeles	46.4 MILES
	Los Angeles International Airport (LAX)	44 MILES

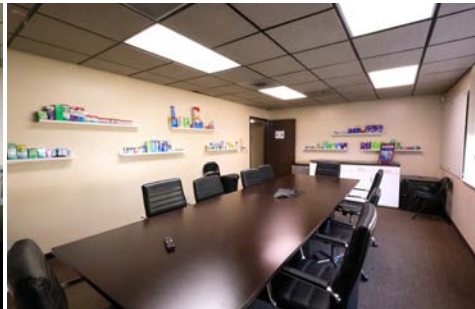
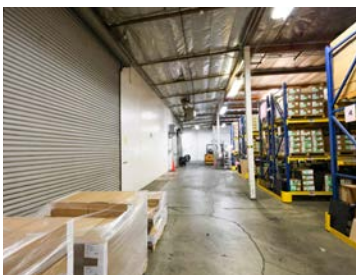
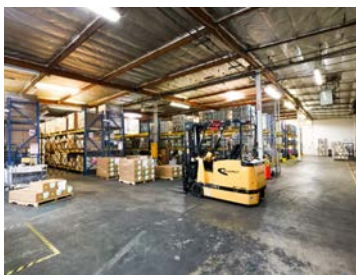
Tai Ngo, CCIM
Senior Vice President | Lic. ID #01779172
(626) 622-9770 | tngo@lee-associates.com

Michael Lee, MBA, CCIM, SIOR
Senior Vice President | Lic. ID #01703179
(562) 568-2018 | mlee@lee-associates.com

Lee & Associates - Industry Inc.
13181 Crossroads Pkwy, N, Suite 300,
City of Industry, CA 91746
(562) 699-7500 | Corp. ID# 01125429

±21,536 SF

Industrial Building For Sublease



Tai Ngo, CCIM
Senior Vice President | Lic. ID #01779172
(626) 622-9770 | tngo@lee-associates.com

Michael Lee, MBA, CCIM, SIOR
Senior Vice President | Lic. ID #01703179
(562) 568-2018 | mlee@lee-associates.com

Lee & Associates - Industry Inc.
13181 Crossroads Pkwy, N, Suite 300,
City of Industry, CA 91746
(562) 699-7500 | Corp. ID# 01125429