

970 WEST 190TH STREET SUITE 210

TORRANCE, CA 90502



OFFICE SUBLEASE | AVAILABLE NOW

2,332 RSF

HUGHESMARINO

BUILDING INFORMATION



BUILDING

The Enclave

ADDRESS

970 W 190th Street,
Suite 210,
Torrance, CA 90502

AVAILABLE

Immediately

ASKING RATE

\$2.85/SF

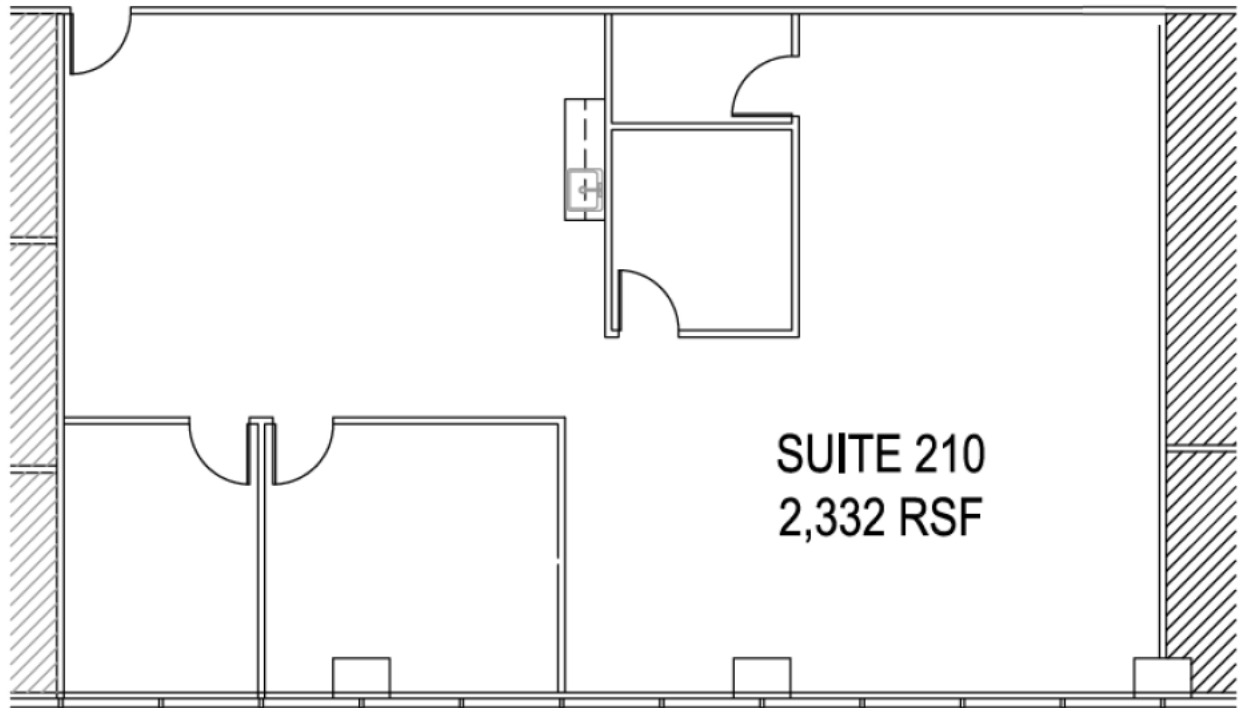
AVAILABLE THROUGH

June 30, 2027

ADDITIONAL FEATURES

- Furniture can be included
- On-site dining
- Dog friendly environment
- Abundant parking with EV
- Unparalleled Class A finishes throughout
- On-site bike program
- Engaging common areas

FLOOR PLAN



970 WEST 190TH STREET, SUITE 210



970 WEST 190TH STREET, SUITE 210



CONTACT INFORMATION



PAIGE SELES

paige@hughesmarino.com

412.639.8202

Lic. #02205266

**11150 Santa Monica Blvd,
Suite 850,**

Los Angeles, CA 90025
310.277.3211 | hughesmarino.com

HUGHESMARINO