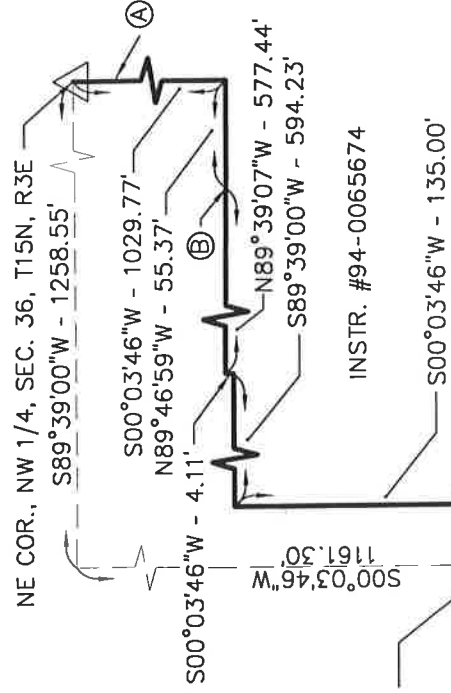


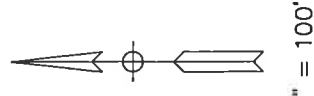
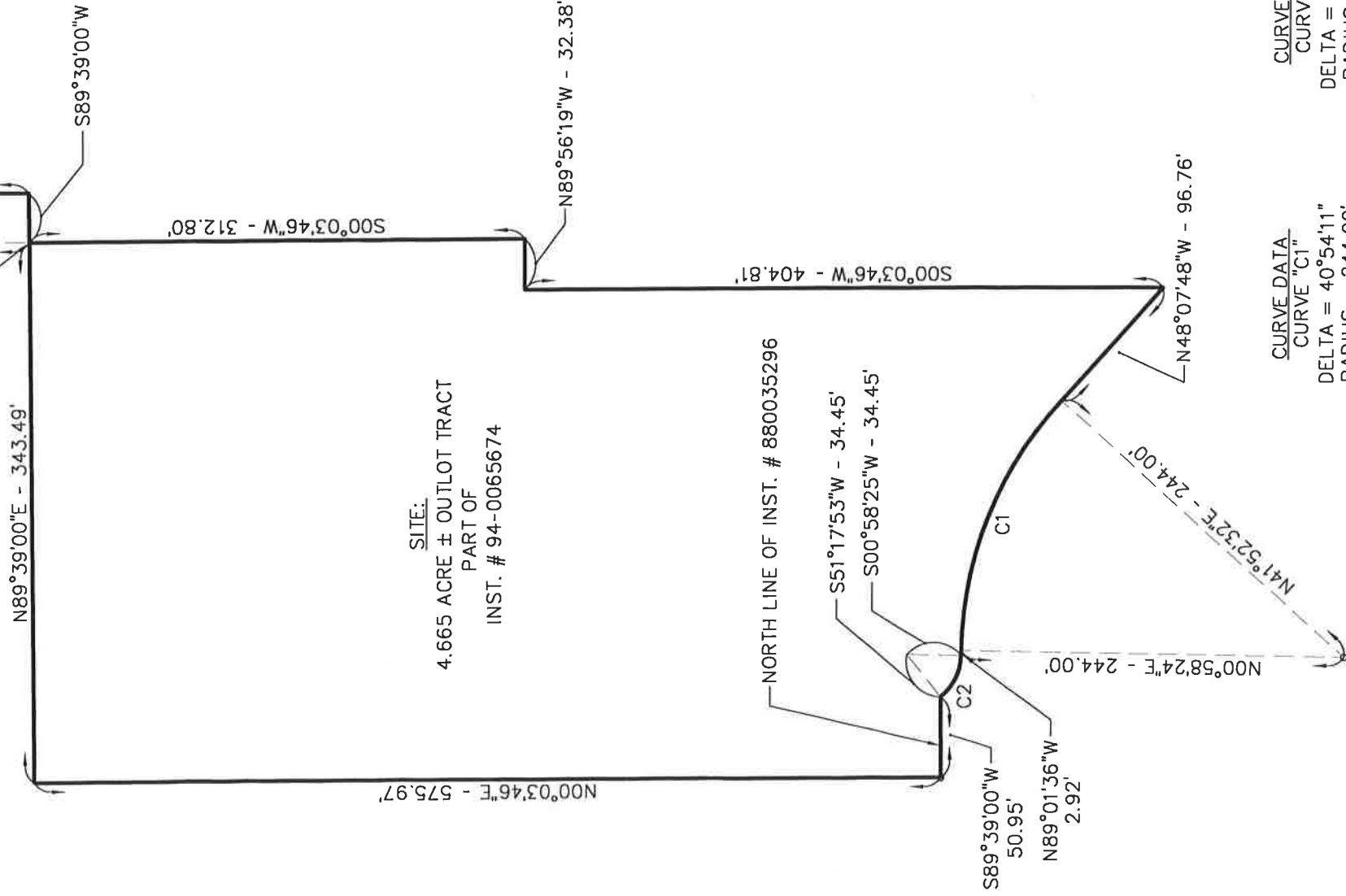
PL01 SCALE: 1:100.000 EDIT DATE: 02/07/02 13:27:06 EDITED BY: JHH - S184 DWG FILE: \\S68\land\Projects R2\01-599\dwg\IN2001.0599.6.EX

- Ⓐ E LINE, NW 1/4, SEC. 36, T15N, R3E
- Ⓑ INTERSECTION OF WESTERN R/W US HWY 31 & NORTHERN BOUNDARY LINE OF A 32.5 ACRE TRACT



N89°39'00"E - 343.49'  
 POINT OF BEGINNING  
 INSTR. #94-0065674  
 S00°03'46"W - 135.00'

SITE:  
 4.665 ACRE ± OUTLOT TRACT  
 PART OF  
 INSTR. # 94-0065674



CURVE DATA  
 CURVE "C1"  
 DELTA = 40°54'11"  
 RADIUS = 244.00'  
 ARC LENGTH = 174.19'

CURVE DATA  
 CURVE "C2"  
 DELTA = 50°19'38"  
 RADIUS = 34.45'  
 ARC LENGTH = 30.26'

## PROPOSED OUTLOT PARCEL

### AMERICAN CONSULTING, INC.

Architects  
 Consultants  
 Engineers

7260 SHADELAND STATION  
 INDIANAPOLIS, IN 46256-3917  
 (317) 547-5580 FAX: (317) 543-0270

Copyright (C) 1966-2002 by American Consulting, Inc.

DATE: 2/7/02	SHEET NO.
DRAWN BY: JHH	1 of 2
JOB NO. 01-599	

DESC. FILE: 01-599