



FOR SUBLEASE

Hialeah Warehouse & Yard

3630 East 10th Court , Hialeah, FL 33013



LEASE RATE

\$16,950 PER MONTH GROSS

OFFERING SUMMARY

BUILDING SIZE: 8,475 SF

LOT SIZE: 0.46 Acres

YEAR BUILT: 1958

RENOVATED: 2020

ZONING: M-1

MARKET: Miami-Dade

SUBMARKET: Airport East

PROPERTY HIGHLIGHTS

- +/- 8,475 SF Warehouse plus Yard
- Compacted Limerock Yard, Gated & Lit w/ Drainage
- LED Lighting Throughout
- +/- 1,200 SF Renovated Office Area
- Two (2) Restrooms in Office and One (1) in Warehouse
- +/- 18' Clear Ceiling Height
- Heavy 3 Phase Power
- Three (3) Oversized Grade Level Doors
- Ten (10) Parking Spaces
- Seal Coated Parking Area
- Existing Lease Term Ends January 2028



Joel A. Kattan, SIOR
Senior Director
O: 954.448.8531
joel@svncr.com



Anthony Peragine
Senior Advisor
O: 786.643.0416
anthony@svncr.com





FOR SUBLEASE

Hialeah Warehouse & Yard

3630 East 10th Court , Hialeah, FL 33013



Joel A. Kattan, SIOR
Senior Director
O: 954.448.8531
joel@svncr.com



Anthony Peragine
Senior Advisor
O: 786.643.0416
anthony@svncr.com

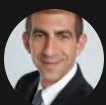
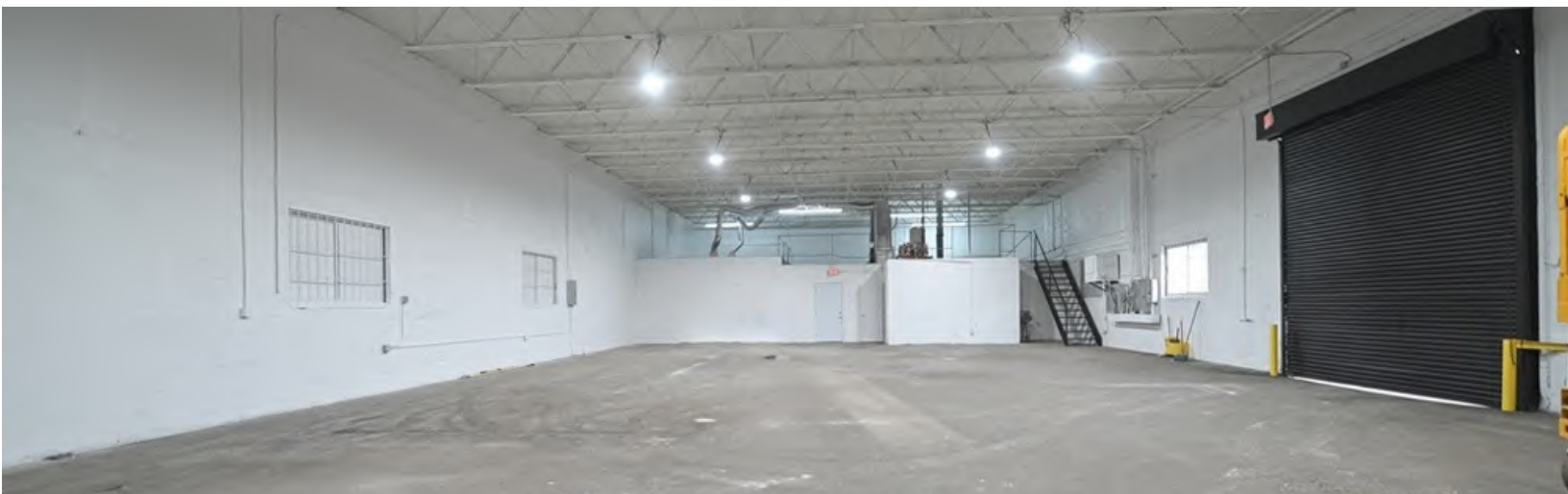
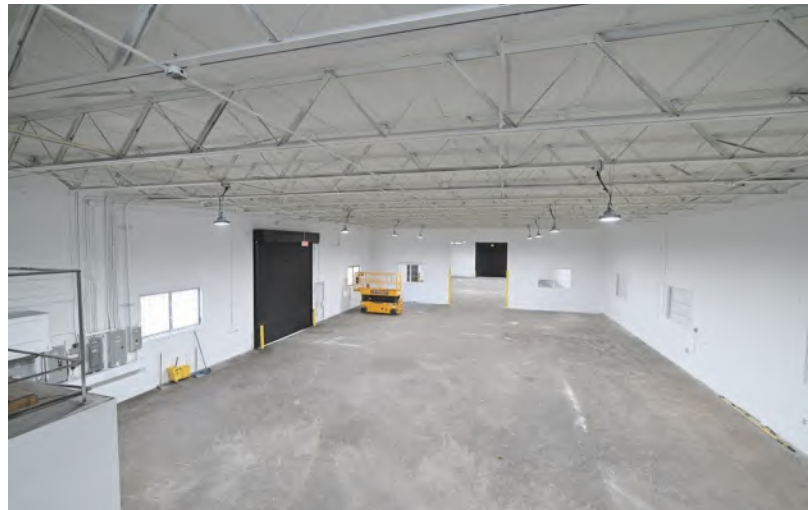




FOR SUBLEASE

Hialeah Warehouse & Yard

3630 East 10th Court , Hialeah, FL 33013



Joel A. Kattan, SIOR
Senior Director
O: 954.448.8531
joel@svncr.com



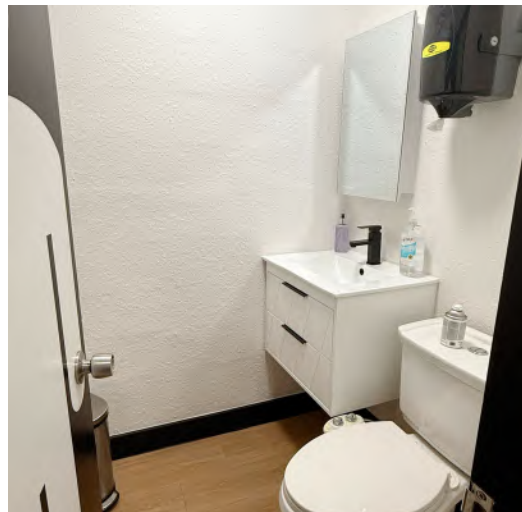
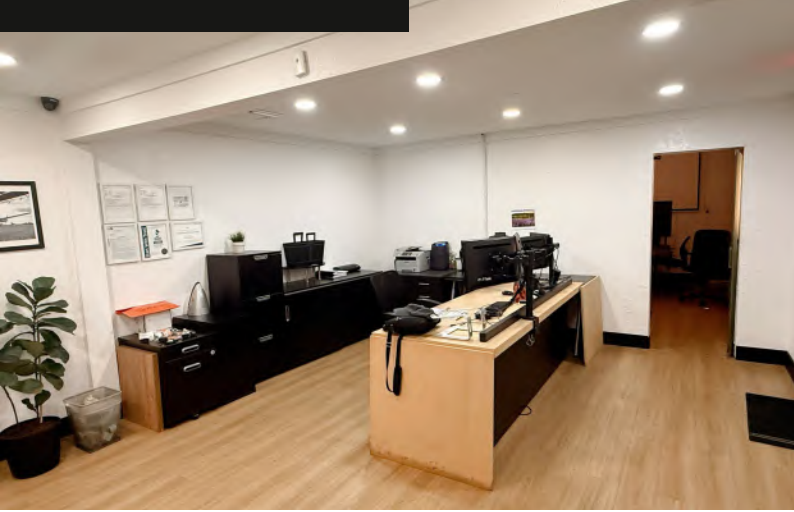
Anthony Peragine
Senior Advisor
O: 786.643.0416
anthony@svncr.com





FOR SUBLEASE

Hialeah Warehouse & Yard
3630 East 10th Court , Hialeah, FL 33013



Joel A. Kattan, SIOR
Senior Director
O: 954.448.8531
joel@svncr.com



Anthony Peragine
Senior Advisor
O: 786.643.0416
anthony@svncr.com

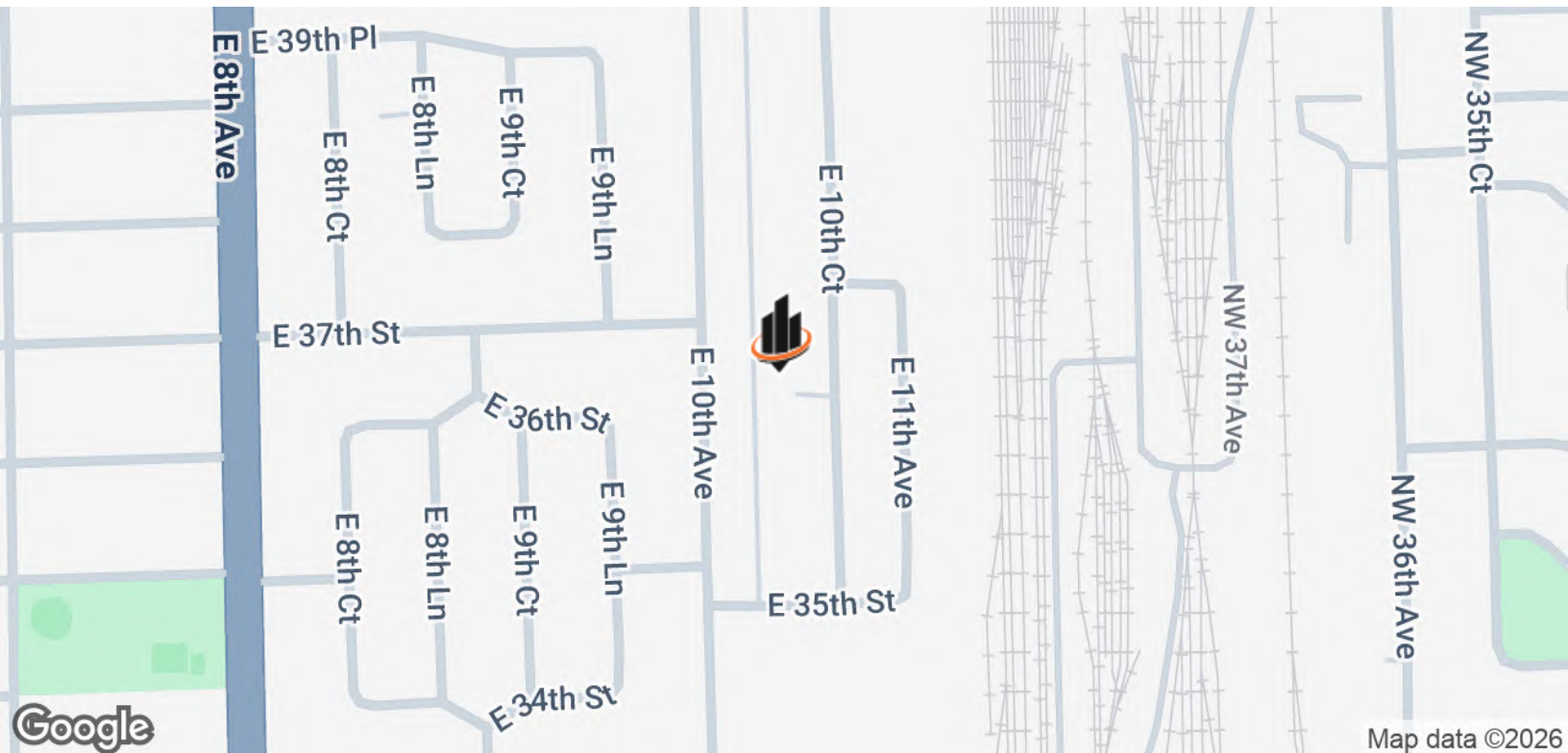
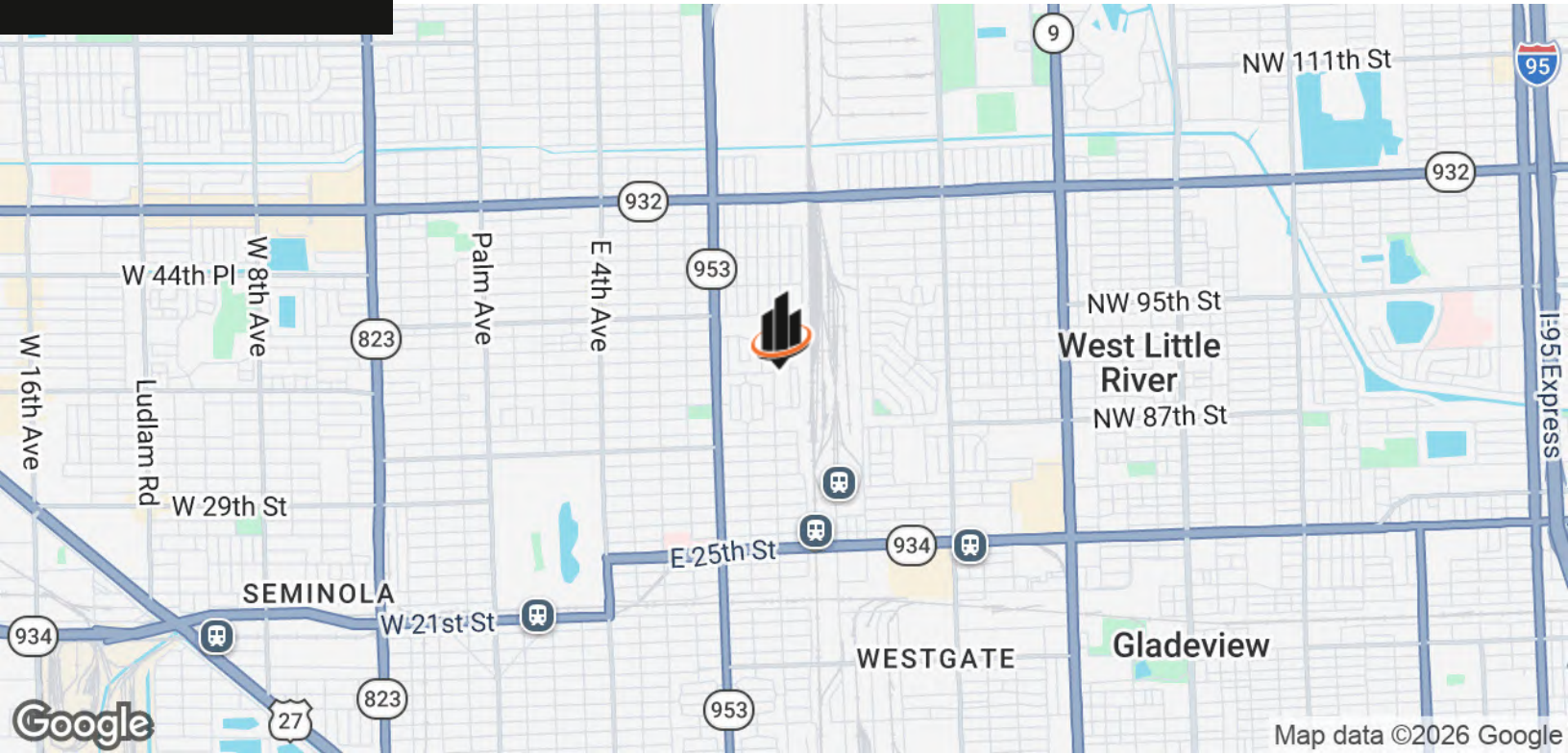




FOR SUBLEASE

Hialeah Warehouse & Yard

3630 East 10th Court , Hialeah, FL 33013



Joel A. Kattan, SIOR
Senior Director
O: 954.448.8531
joel@svncr.com



Anthony Peragine
Senior Advisor
O: 786.643.0416
anthony@svncr.com

