



**FOR LEASE**

**Town Square—Downtown Plainfield**

**24402 W Lockport Street, Plainfield IL 60544**

**Property Summary**

**Available Spaces:** Retail Unit 118 (1,500 sf) & Office Suite 206 (2,460 sf)

**Lease Rate:** \$19.00—\$21.00 / psf modified gross

**Highlights:** Excellent Visibility

**FOR LEASE INFORMATION:**

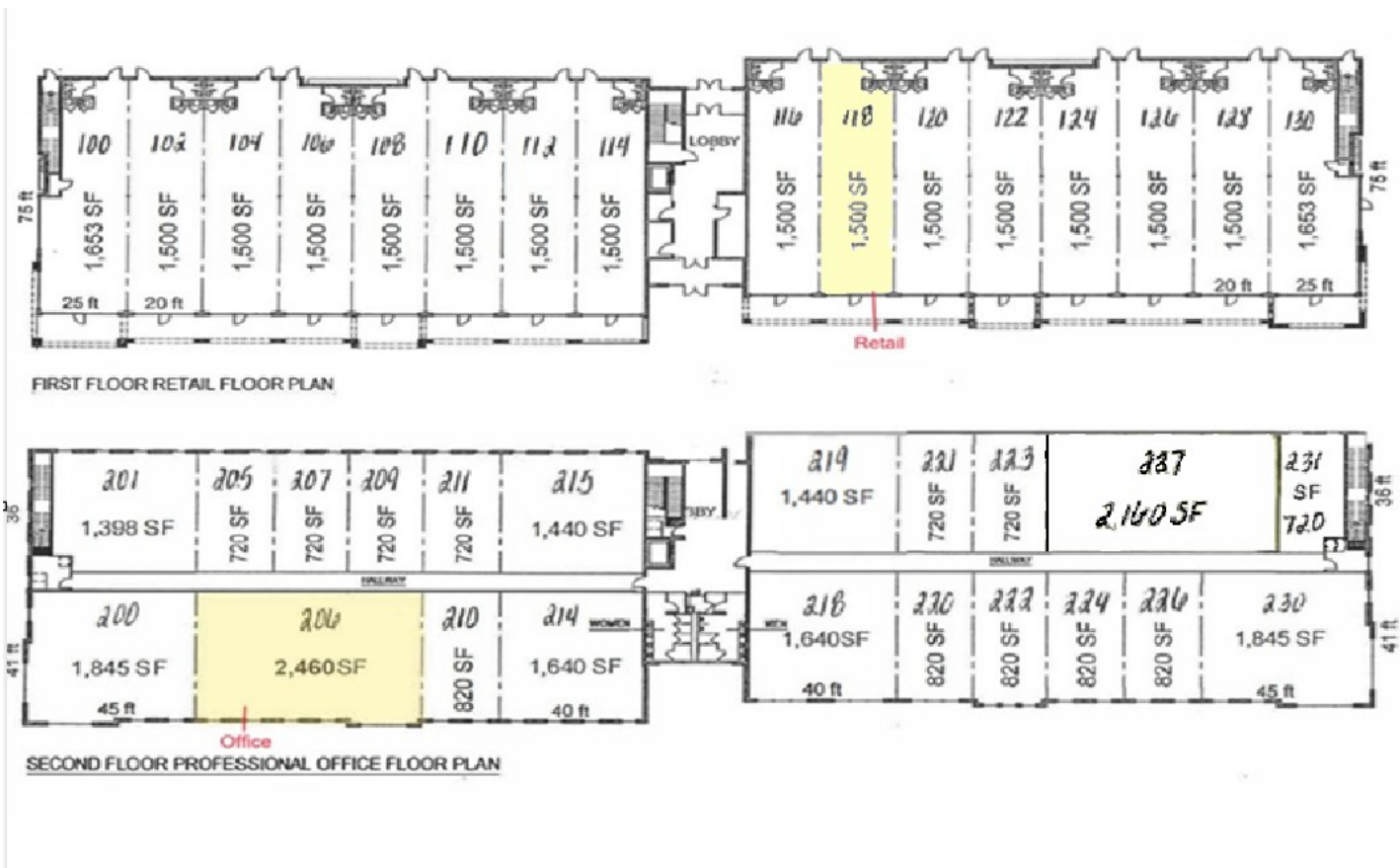
**Donna Ballentine** | Principal Broker  
Direct: 847-254-1215  
Donna@CapitalCommercialRE.com

**Jame Weinhold** | Principal Broker  
Direct: 630-947-6259  
Jim@CapitalCommercialRE.com

# FOR LEASE 24402 W Lockport Street, Plainfield IL

## 24402 W Lockport | Site Plan

(Unit 206) - 2,460 sf | (Unit 118) - 1,500 sf



While commercially reasonable effort has been made to provide accurate information, Capital Commercial Real Estate Brokerage, PLLC and its licensed brokers make no guarantees, representations or warranties as to the completeness or accuracy of the information presented herein. All interested parties are encouraged to perform their own due diligence and verify the information contained herein. This listing, its price, availability and circumstances are subject to change at any time or may be withdrawn for any reason without notice.

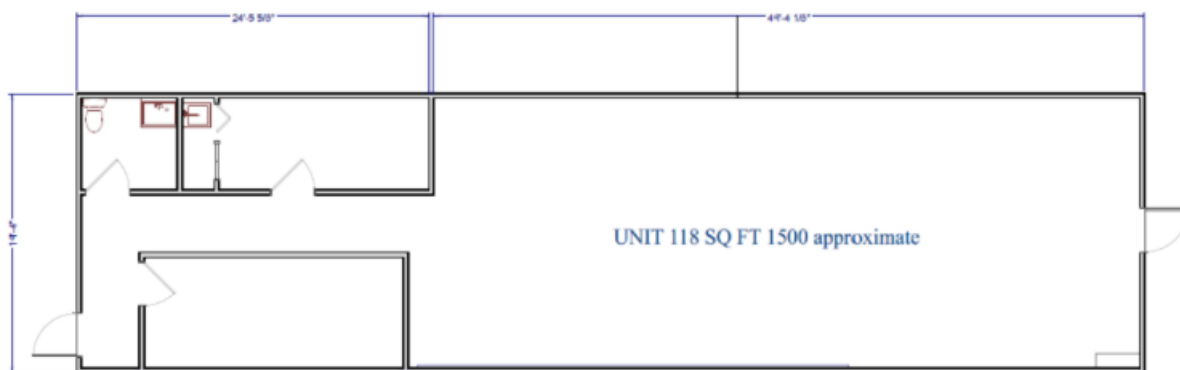
### FOR LEASE INFORMATION:

**Donna Ballentine** | Principal Broker  
Direct: 847-254-1215  
Donna@CapitalCommercialRE.com

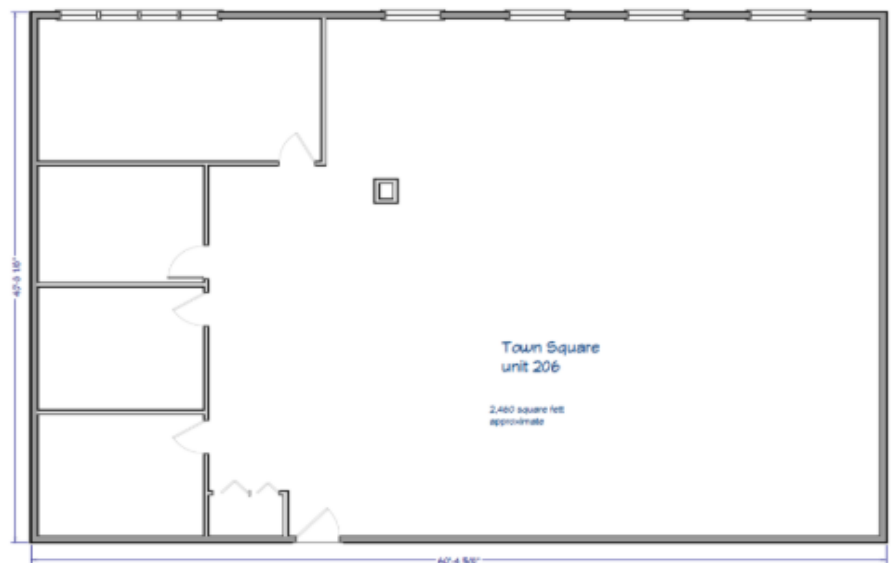
**Jame Weinhold** | Principal Broker  
Direct: 630-947-6259  
Jim@CapitalCommercialRE.com

**FOR LEASE 24402 W Lockport Street, Plainfield IL****24402 W Lockport | Site Plan**

(Unit 206) - 2,460 sf | (Unit 118) - 1,500 sf



ALL DIMENSIONS ARE APPROXIMATE



While commercially reasonable effort has been made to provide accurate information, Capital Commercial Real Estate Brokerage, PLLC and its licensed brokers make no guarantees, representations or warranties as to the completeness or accuracy of the information presented herein. All interested parties are encouraged to perform their own due diligence and verify the information contained herein. This listing, its price, availability and circumstances are subject to change at any time or may be withdrawn for any reason without notice.

**FOR LEASE INFORMATION:****Donna Ballentine** | Principal Broker

Direct: 847-254-1215

Donna@CapitalCommercialRE.com

**Jame Weinhold** | Principal Broker

Direct: 630-947-6259

Jim@CapitalCommercialRE.com

**CAPITAL COMMERCIAL**

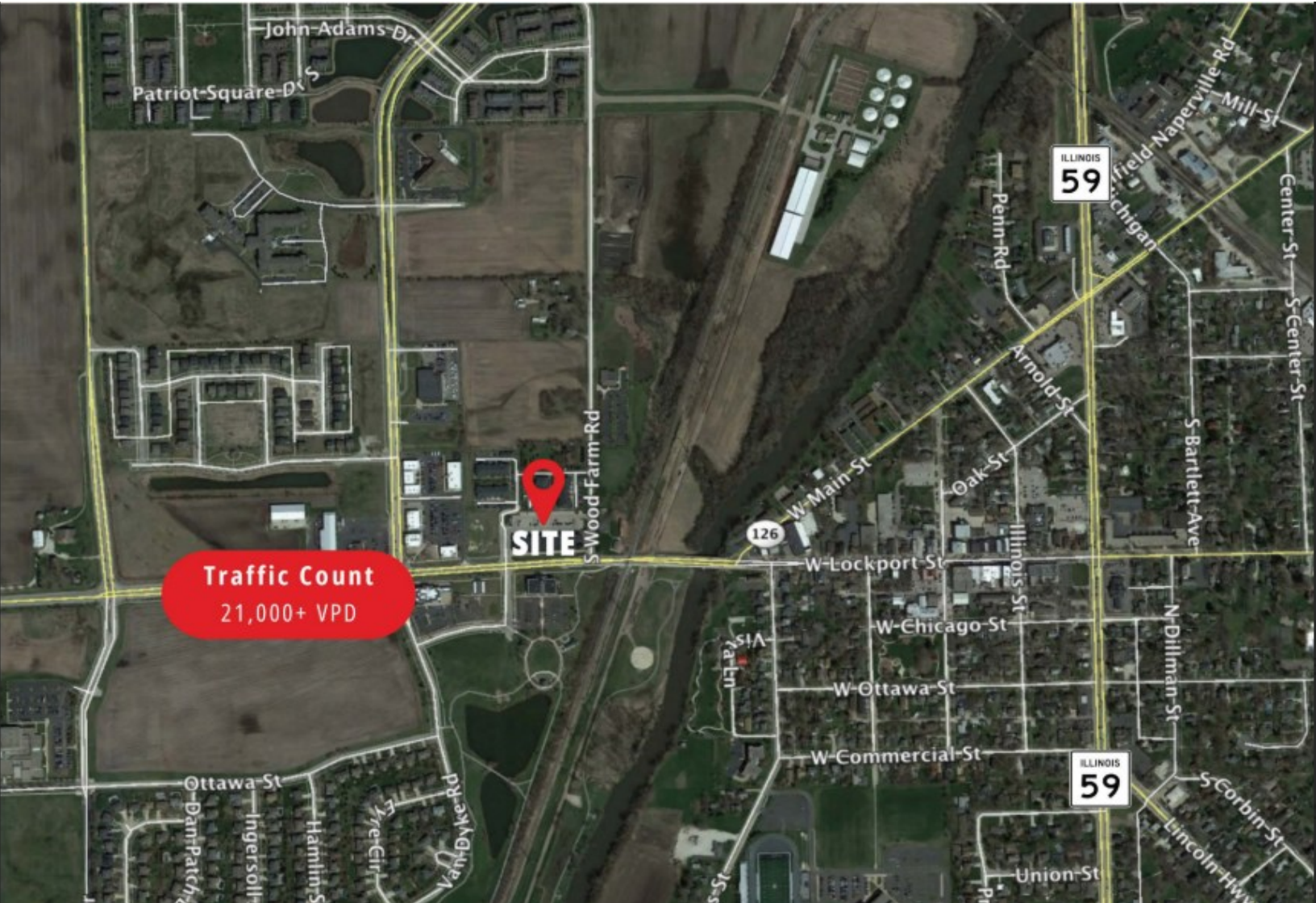
**REAL ESTATE BROKERAGE**

Capital Commercial Real Estate Brokerage, PLLC  
114 N Washington—Suite 6 Naperville, IL 60540

Www.CapitalCommercialRE.com

**FOR LEASE 24402 W Lockport Street, Plainfield IL**

**24402 W Lockport | Site Plan**



While commercially reasonable effort has been made to provide accurate information, Capital Commercial Real Estate Brokerage, PLLC and its licensed brokers make no guarantees, representations or warranties as to the completeness or accuracy of the information presented herein. All interested parties are encouraged to perform their own due diligence and verify the information contained herein. This listing, its price, availability and circumstances are subject to change at any time or may be withdrawn for any reason without notice.

**FOR LEASE INFORMATION:**

**Donna Ballentine** | Principal Broker  
Direct: 847-254-1215  
Donna@CapitalCommercialRE.com

**Jame Weinhold** | Principal Broker  
Direct: 630-947-6259  
Jim@CapitalCommercialRE.com