

# Unique Restaurant Space in Historic Fire Station

Altus, OK

± 4,250 SF

\$18 SF/YR



## Key Features:

- **4250 sq. ft.** of versatile space with high ceilings, original details, and open floor plan
- Prime location facing the new downtown park with great visibility and foot traffic
- Offering a **completely renovated shell** or will **build to suit** based on your needs
- Flexible leasing options available – whether you want a turnkey space or a custom build-out
- Additional 2500 sq. ft. attached bonus space (game space, overflow seating, etc.) also available

Transform your vision into reality with this incredible opportunity to lease a **4250 sq. ft. restaurant space** in a historic fire station, located right next to the brand-new downtown park in Altus, OK.

This one-of-a-kind space retains its classic firehouse charm with unique, authentic fire station items that can be incorporated into your restaurant's décor, giving your dining experience a distinctive and memorable flair.

Bring your restaurant concept to life in a vibrant, growing downtown area and make your mark in this iconic, repurposed fire station.

**Contact us today to schedule a tour and explore how this unique space can work for your business!**

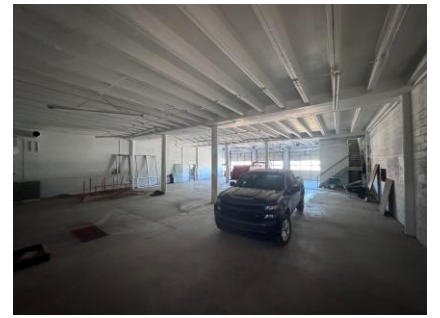




Northeast Corner



Northwest Corner



Southwest Corner



Southeast Corner



Restrooms (SE corner)



City Park View From Roof



View from Northwest



View from Northeast



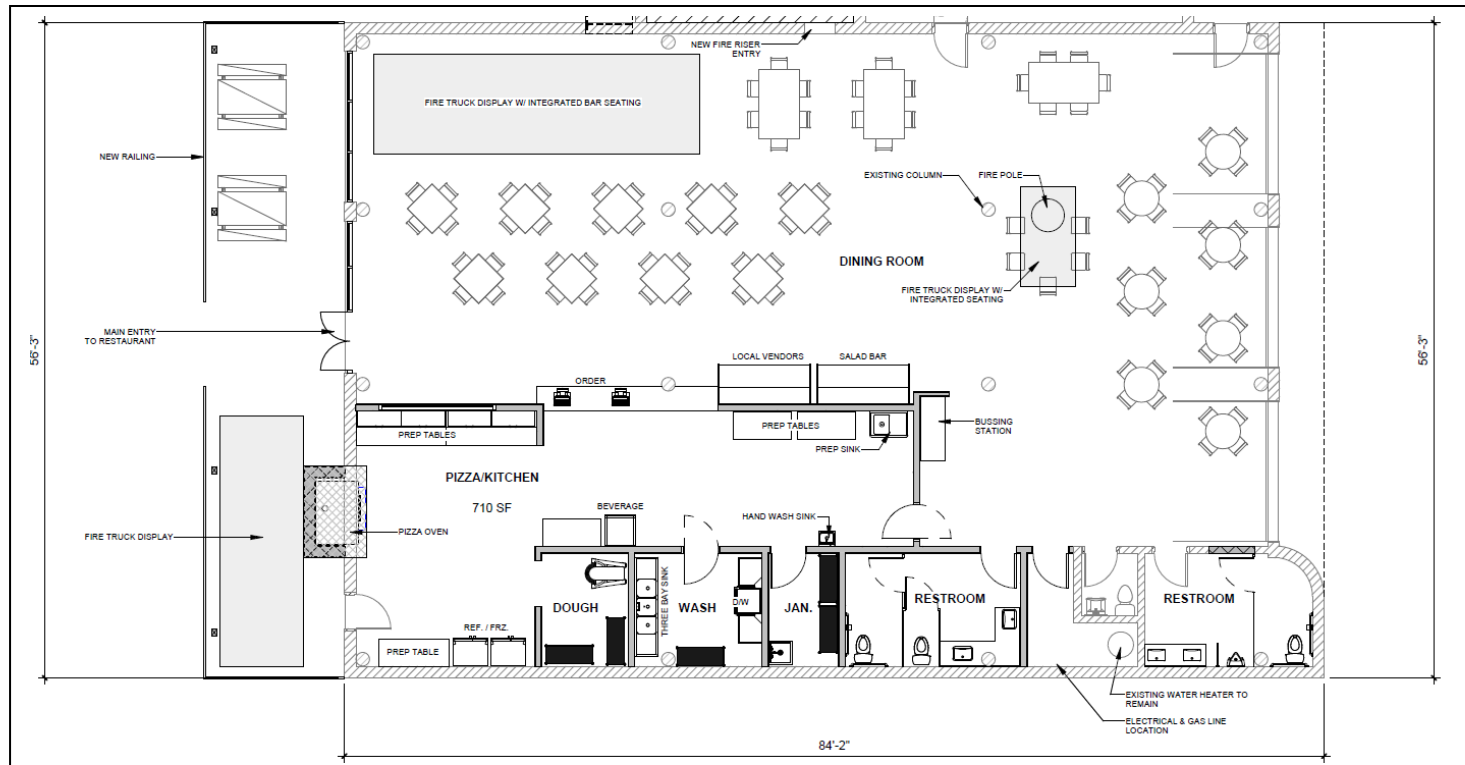
View from Southwest



View from Southeast



View from Northeast



Potential Layout