

FOR LEASE

04/2026



PARKWAY EAST INDUSTRIAL CENTER | 1375 S BERTELSEN RD | EUGENE, OR

NEW CONSTRUCTION INDUSTRIAL

3,000 – 21,000 SF Available | Divisible Spaces

- Available June 2026
- 24' Clear Height | Dock & Grade-Level Loading
- E-2 Zoning (Industrial & Commercial Uses)

Lease Rate: \$0.87/SF NNN | Includes Up to 10% Office Build-Out



BILL NEWLAND
bill@campbellre.com
(541) 484-2214
Licensed in the State of Oregon

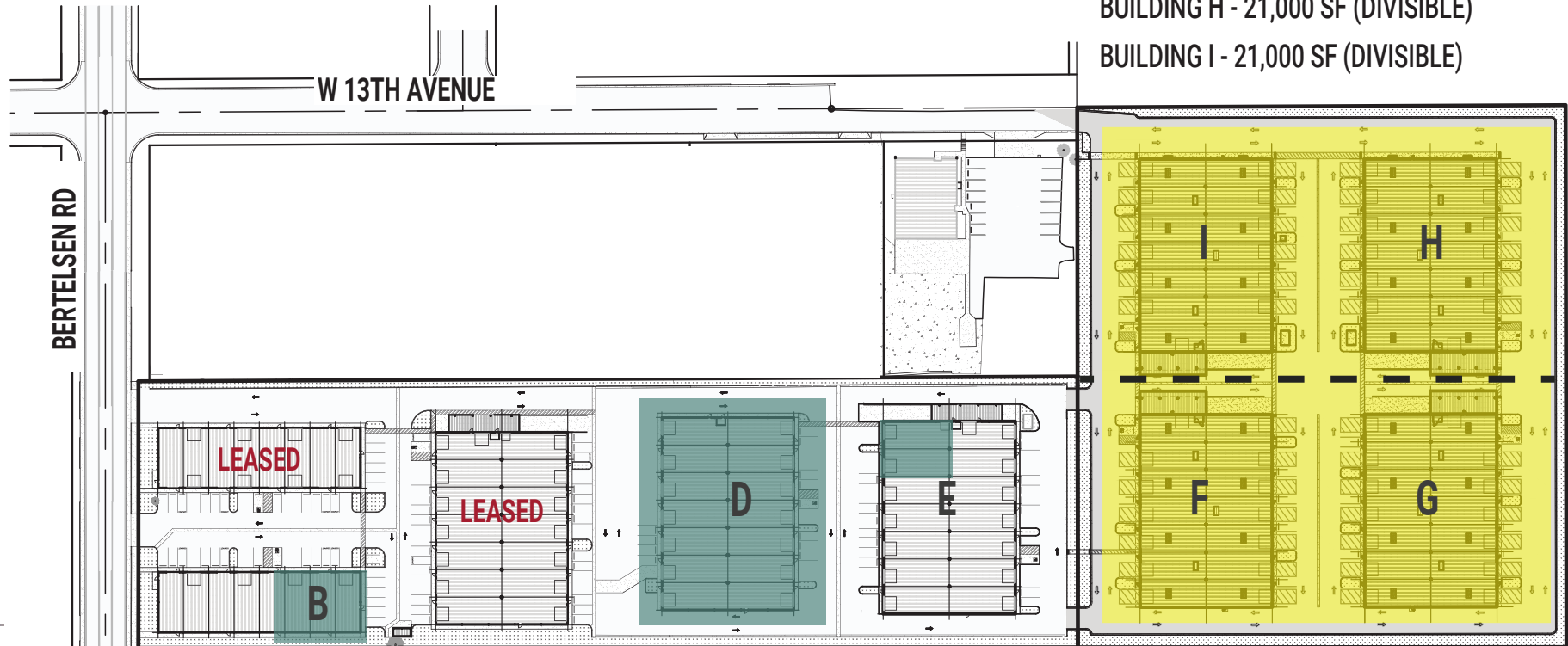
TIM CAMPBELL
timc@campbellre.com
(541) 484-2214
Licensed in the State of Oregon

BUILDING AVAILABILITY

NEW BUILDINGS AVAILABLE SEPT. 2026:

BUILDING H - 21,000 SF (DIVISIBLE)

BUILDING I - 21,000 SF (DIVISIBLE)



PARKWAY INDUSTRIAL CENTER AVAILABILITY:

BUILDING B - 3,795 SF

BUILDING D - 21,000 SF (DIVISIBLE)

BUILDING E - 4,500 SF

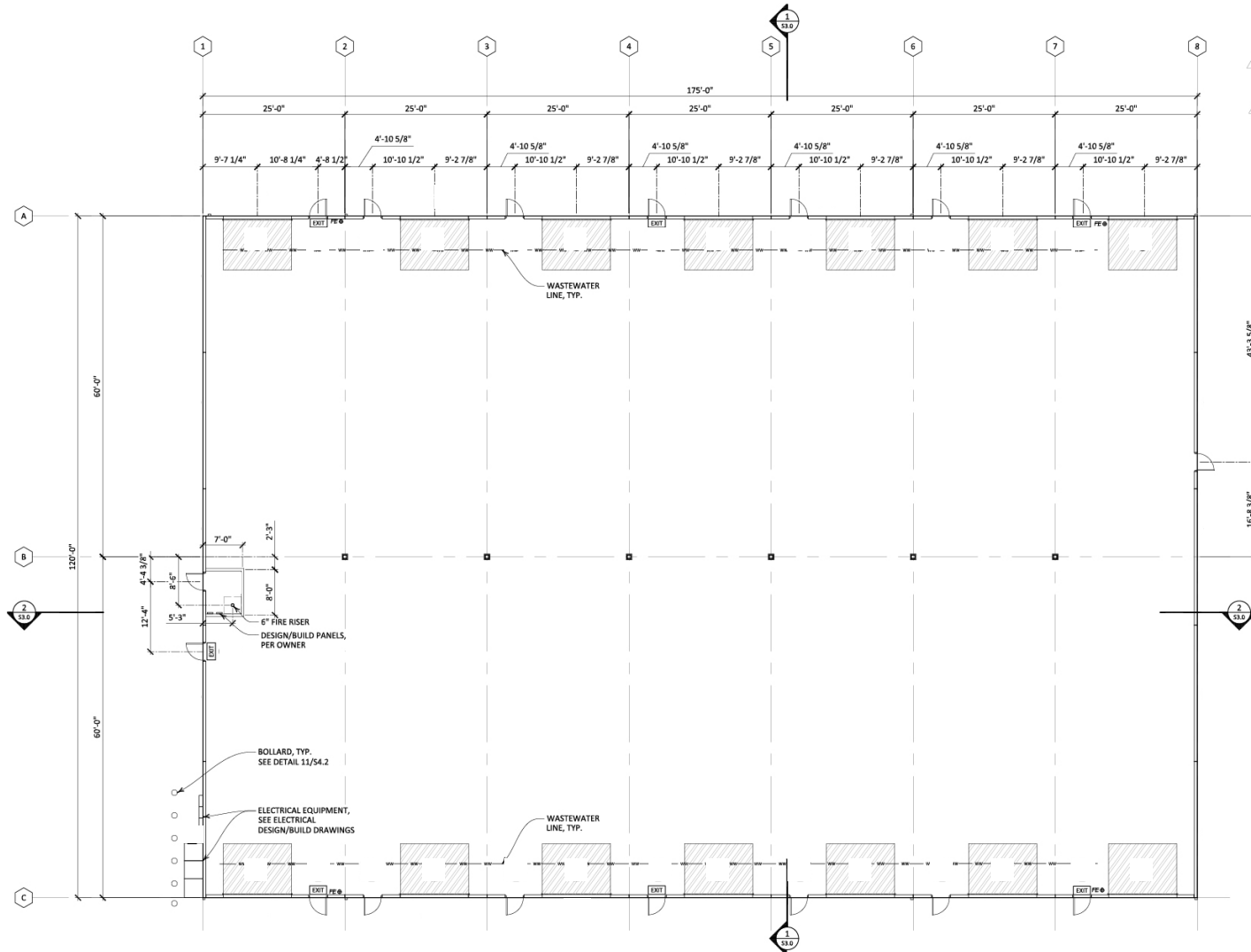
\$0.75/SF, NNN (NNN CHARGES = \$0.25/SF)

NEW BUILDINGS AVAILABLE JUNE 2026:

BUILDING F - 21,000 SF (DIVISIBLE)

BUILDING G - 21,000 SF (DIVISIBLE)

BUILDING D



The information in this package was obtained from sources deemed reliable, and is not guaranteed by agent. Package is subject to change, error or omission, prior sale or lease, correction or withdrawal. Any party contemplating purchase is urged to conduct their own independent study and inspection.

LOCATION + ACCESS

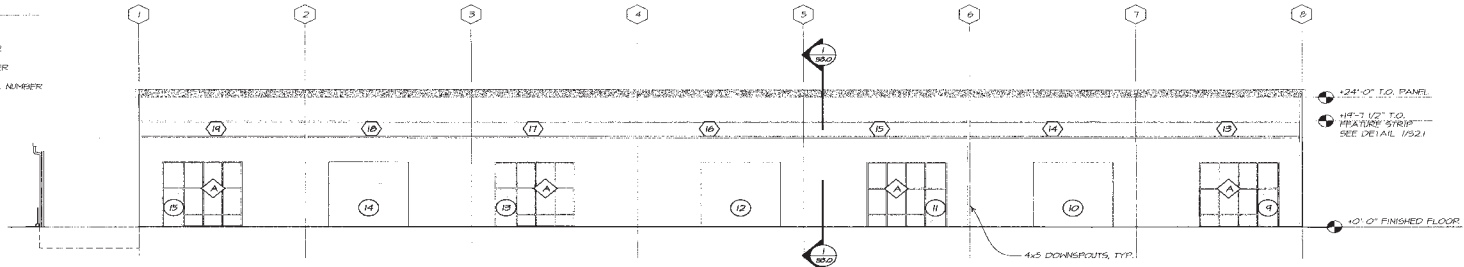
- West Eugene Industrial Corridor
- Immediate access to Beltline Hwy & I-5
- 5 minutes to Beltline | 10 minutes to I-5



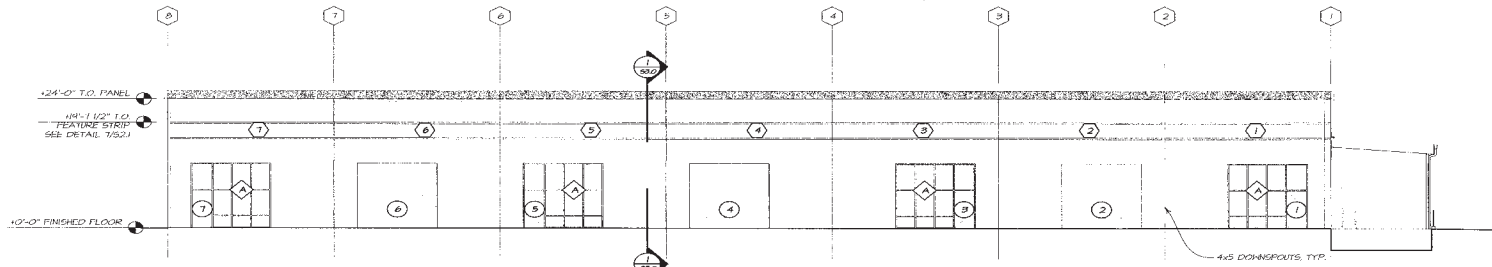
The information in this package was obtained from sources deemed reliable, and is not guaranteed by agent. Package is subject to change, error or omission, prior sale or lease, correction or withdrawal. Any party contemplating purchase is urged to conduct their own independent study and inspection.

BUILDING ELEVATIONS

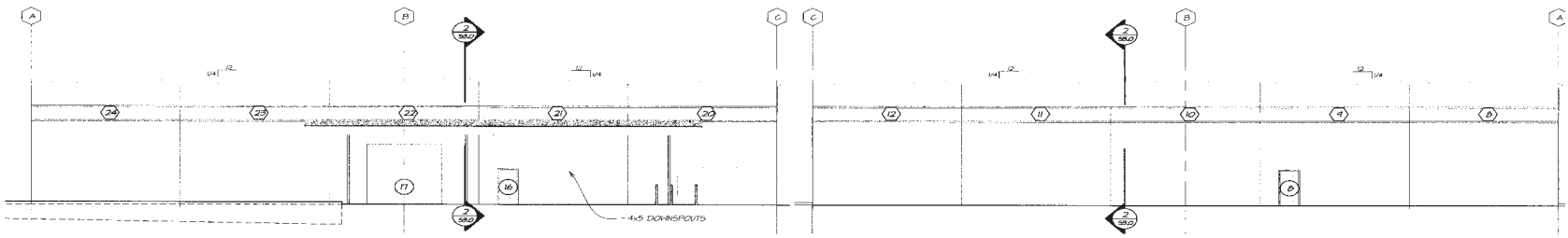
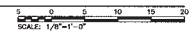
- SYMBOLS**
- GRID LINE
 - DOOR NUMBER
 - WINDOW LETTER
 - TILT-UP PANEL NUMBER



1 BUILDING C WEST ELEVATION
SCALE: 1/8" = 1'-0"



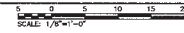
2 BUILDING C EAST ELEVATION
SCALE: 1/8" = 1'-0"



3 BUILDING C NORTH ELEVATION
SCALE: 1/8" = 1'-0"



4 BUILDING C SOUTH ELEVATION
SCALE: 1/8" = 1'-0"



The information in this package was obtained from sources deemed reliable, and is not guaranteed by agent. Package is subject to change, error or omission, prior sale or lease, correction or withdrawal. Any party contemplating purchase is urged to conduct their own independent study and inspection.

LOCATION MAP



The information in this package was obtained from sources deemed reliable, and is not guaranteed by agent. Package is subject to change, error or omission, prior sale or lease, correction or withdrawal. Any party contemplating purchase is urged to conduct their own independent study and inspection.