

# Hickman Road & NW 108th Street

CLIVE | IOWA



## PROPERTY FEATURES:

- **Lease Rate: Negotiable**
- Size: 6 acres
- Built-to-suit available
- Size: 1,800 SF to 72,000 SF
- Property will be divided between two buildings
- Easy access to I-80/35 (118,000 VPD in 2016)
- Easy access to Hickman Road
- Expected Delivery Date: Summer 2025
- Outside storage available
- Zoned M-1
- Centrally located
- Listing #11374547

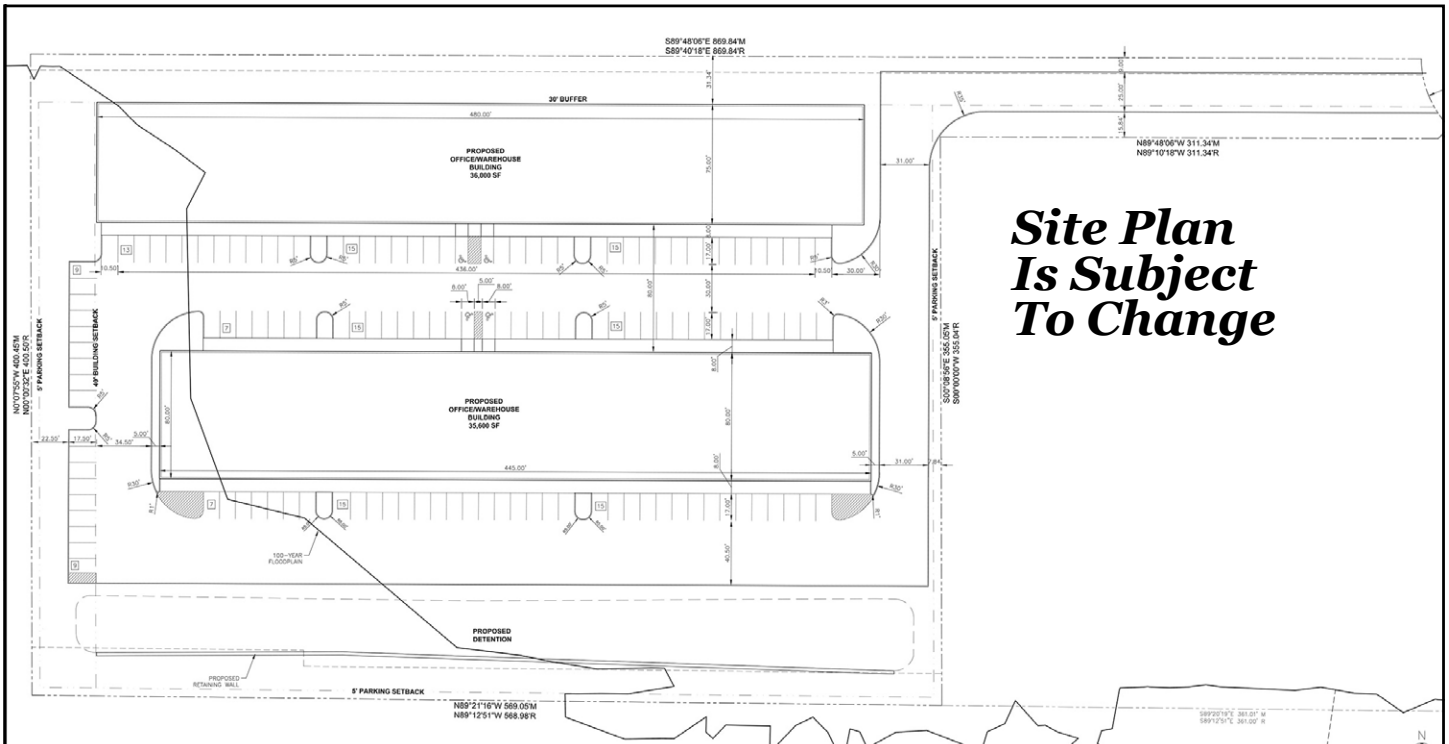
STANBROUGH REALTY COMPANY  
2775 86th Street  
Urbandale, Iowa 50322  
StanbroughRealty.com | 515.334.3345

JEFF STANBROUGH  
CCIM, CPM  
515.202.6649  
Jeff@StanbroughRealty.com

ANDREW MCCUNE  
515.402.1642  
Andrew@StanbroughRealty.com

# Hickman Road & NW 108th Street

CLIVE | IOWA



STANBROUGH REALTY COMPANY  
10888 Hickman Road, Suite 3B  
Clive, Iowa 50325 | 515.334.3345  
StanbroughRealty.com

JEFF STANBROUGH  
CCIM, CPM  
515.202.6649  
Jeff@StanbroughRealty.com

ANDREW MCCUNE  
515.402.1642  
Andrew@StanbroughRealty.com