



Commercial and Industrial Real Estate  
Sales and Leasing  
Property Management

Joey Betbeze  
3345 Halls Mill Road  
Mobile, Alabama 36606

Office: 251.476.4111  
Cell: 251.554.8145

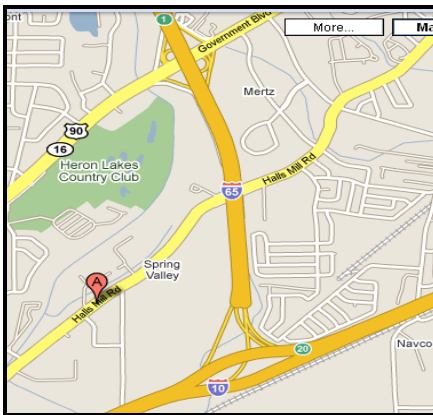
JoeyBetbeze@BetbezeRealty.com  
www.BetbezeRealty.com

# WAREHOUSE FOR LEASE

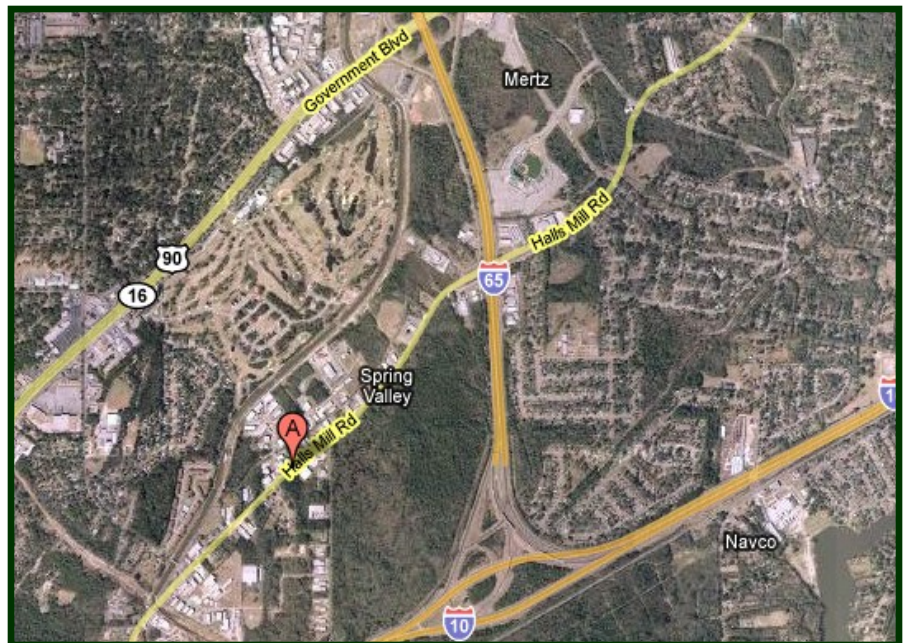
**3766-B HALLS Mill Street  
Mobile, Alabama 36693**



Approximately 6,250 square foot office and warehouse facility for Lease. 2,500 S.F. of office and 3,750 S.F. of warehouse. 2,500 S.F. Mezzanine above office.



- 6,250 square foot building
- Lot Size: Approx. 1 Acre
- Metal Construction
- 3 Phase Power
- 16' eave heights
- One 10' x 12' Overhead Door  
One 12' x 14' Overhead Door
- Zoned I-1 (Light Industrial)
- Water and Sewer.
- **\$5,200.00/Mo.NNN**



Located approximately one mile from the intersection of Highway 90 (Government Blvd.) and Interstate 65. Ideal location for light manufacturing, wholesale supply company or contractors.

*The information above has been obtained from sources believed reliable. While we do not doubt its accuracy we have not verified it and make no guarantee, warranty or representation about it. It is your responsibility to independently confirm its accuracy and completeness. Any projections, opinions, assumptions, or estimates used are for example only and do not represent the current or future performance of the property. The value of this transaction to you depends on tax and other factors which should be evaluated by your tax, financial, and legal advisors. You and your advisors should conduct a careful, independent investigation of the property to determine to your satisfaction the suitability of the property for your needs.*



556' 20 55" W 17'

FOR DRAINAGE & UTILITY FACILITY

15' 0"

50' x 125'  
BUILDING  
6150 SF.

Asphalt

50' x 50'  
OFFICE  
AREA

Yard area

N 31° 54' 00" W 278.10'

SITE PLAN  
SCALE 1" = 10'

HALLS MILL ROAD 50' R/W

