

FOR LEASE | CONCORD SHOWROOM/FLEX

108 MEDBURN STREET | CONCORD, CA 94520

AVAILABLE IMMEDIATELY

108 Meburn Street in Concord CA consists of one (1) building totaling $\pm 17,250$ SF situated on ± 0.97 acres. The Property includes ground floor showroom/flex Office space, as well as 2nd floor Flex/Office space, plus warehouse building area and Yard.

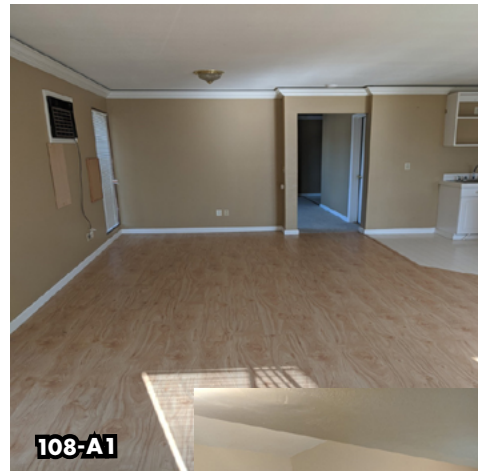


Brian Slocum, SIOR, CCIM
925.984.6989
brian.slocum@tricommercial.com
LIC: #01471483



SPACE FOR LEASE

OFFICE/FLEX OR SHOWROOM SPACE AVAILABLE WITH SMALL ADJACENT YARD



Suite	SF	Description
108-A1	±750 SF	Well maintained 2nd floor office/flex space; kitchenette, bathroom, extra room included; nice light and open feel
108-A	±1,560 SF	Ground floor showroom/flex space; nice walk-up access, formerly Azteca Stone Tile showroom
108-B	±447 SF	2nd floor office/flex space; excellent layout for dark room or photography use
108-B3	±1,147 SF	2nd floor office/flex space, ideal for back office use.

- Showroom and flex/office space; perfect for contractors or small businesses in need of a small space locally
- North Concord location with fast access to multiple nearby Cities
- Nearby freeway on ramp to Highway 4
- Multiple amenities and lunch options nearby

Brian Slocum, SIOR, CCIM
925.984.6989
brian.slocum@tricommercial.com
 LIC: #01471483



www.tricommercial.com

SPACE FOR LEASE

OFFICE/FLEX OR SHOWROOM SPACE AVAILABLE
WITH SMALL ADJACENT YARD



Brian Slocum, SIOR, CCIM
925.984.6989
brian.slocum@tricommercial.com
LIC: #01471483



www.tricommercial.com