

For Lease

Approx. 2,800 Sq. Ft. Retail/Office Space

6135 S. Archer Road, Summit, IL

Lease Rate \$2,500 per month



- | | |
|--|---|
| <ul style="list-style-type: none"> • 10' ceiling height • Many potential uses • Recently updated • Easy highway access | <ul style="list-style-type: none"> • Mixed use zoning • Former video gaming use • Ample parking • Archer Road exposure • Mixed use commercial building |
|--|---|

Demographics

	<u>1 mile</u>	<u>3 miles</u>	<u>5 miles</u>
2024 Households	3,988	37,725	128,850
2024 Population	12,418	105,693	379,775
Avg. HH Income	\$79,757	\$87,260	\$97,410
2025 Vehicles Per Day: 26,637			

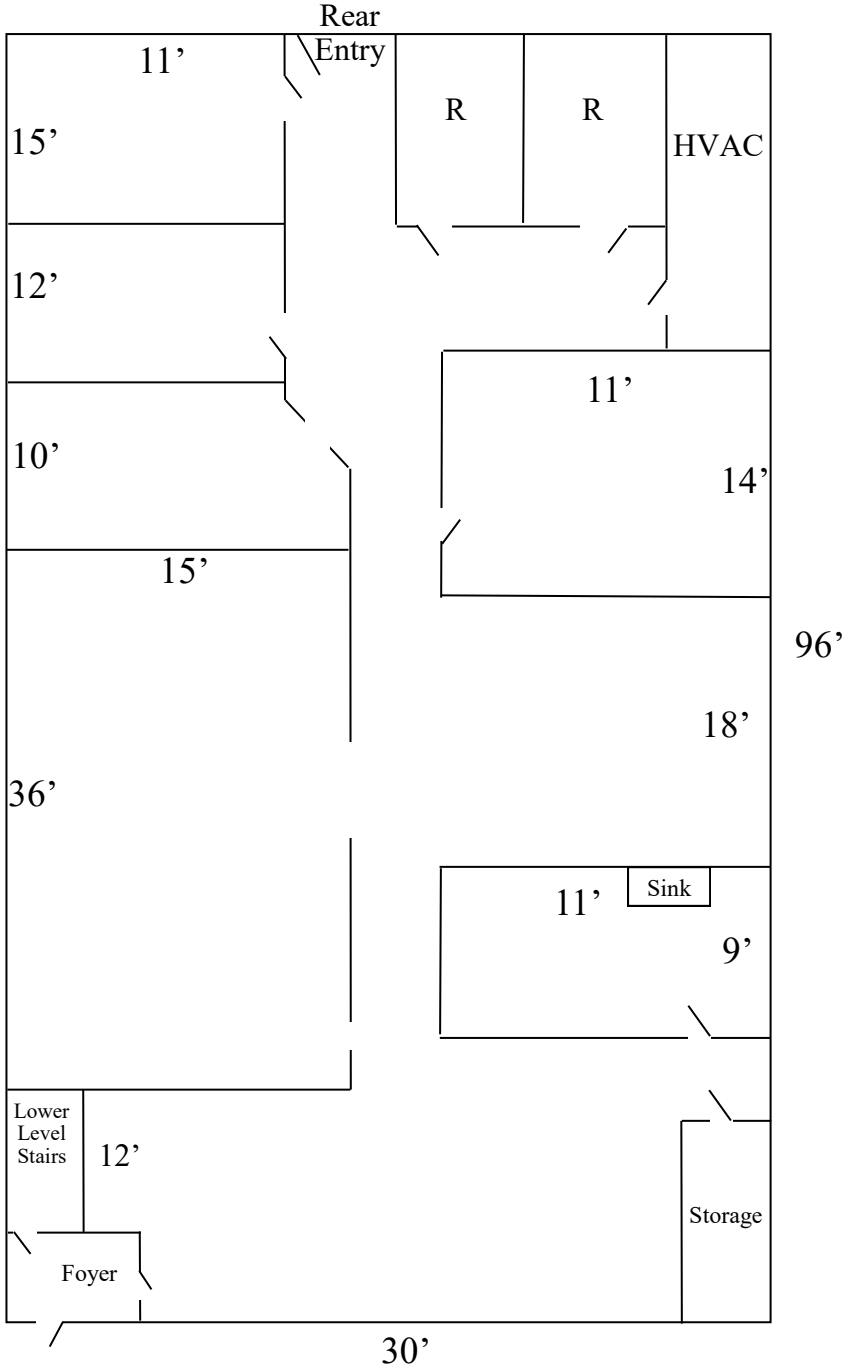


Exclusively Offered by:
Daniel Chopp
(708) 387-2640
dan@choppcommercial.com

Floor Plan

6135 S. Archer Road, Summit, IL

NOTE: DRAWING NOT TO SCALE.



Exclusively Offered by:
Daniel Chopp
(708) 387-2640
dan@choppcommercial.com

All information herein is from sources deemed reliable but not guaranteed accurate. Subject to errors, omissions, and to change of price and terms, prior sale or lease, all without notice.

Exterior Photos

6135 S. Archer Road, Summit, IL



Exclusively Offered by:
Daniel Chopp
(708) 387-2640
dan@choppcommercial.com

All information herein is from sources deemed reliable but not guaranteed accurate.
Subject to errors, omissions, and to change of price and terms, prior sale or lease, all without notice.

Interior Photos

6135 S. Archer Road, Summit, IL



Exclusively Offered by:
Daniel Chopp
(708) 387-2640
dan@choppcommercial.com

All information herein is from sources deemed reliable but not guaranteed accurate.
Subject to errors, omissions, and to change of price and terms, prior sale or lease, all without notice.