

Main+Stone

Stone Avenue #26,400 VPD



Stone Avenue

Wade Hampton Blvd.



Infill development site near Downtown

208 E STONE AVENUE
GREENVILLE, SC 29609



Property overview

- Walking/biking distance to downtown Greenville, surrounded by numerous amenities, including Northpointe Harris Teeter
- Excellent location on heavily-traveled Stone Avenue corridor, with convenient access to I-385, Wade Hampton Boulevard, East North Street, and Laurens Road
- Situated in the heart of Greenville's historic East Park and North Main neighborhoods
- Ideal for commercial or residential development

OFFERING SUMMARY

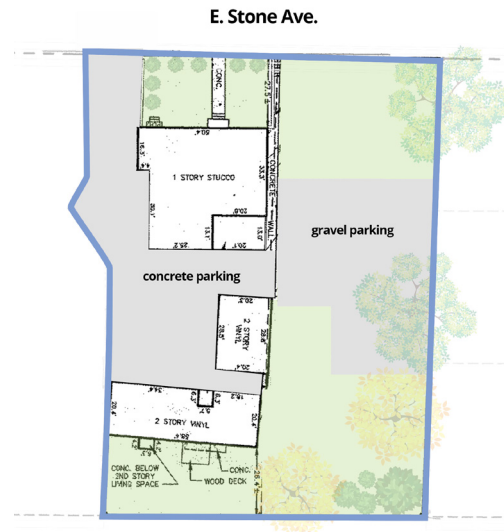
PROPERTY ADDRESS 208 E Stone Ave,
Greenville, SC 29609

PROPERTY SIZE ±0.49 acres

SALE PRICE \$1,250,000

ZONING MX-2

TRAFFIC COUNT 26,400 VPD



DEMOGRAPHICS



\$139,399

average household
income within a
1-mile radius



83,188

total population
within a 3-mile
radius



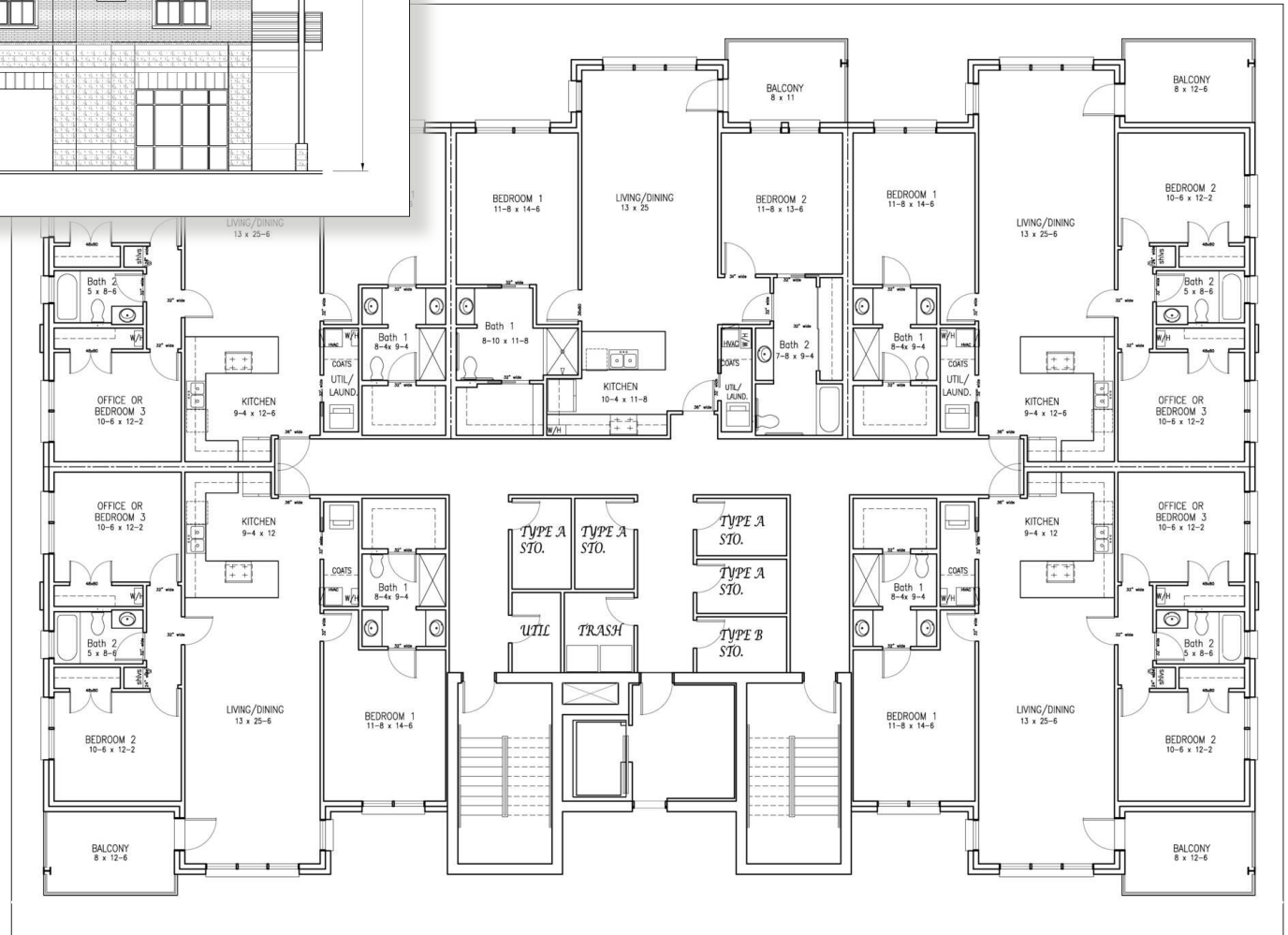
\$585,821

average house
value within a
1-mile radius

Area map



Conceptual plans



If you would like more information on this offering please get in touch.

James McKay
Vice President
+1 864 448 0628
james.mckay@avisonyoung.com

Harris Houser
Associate
+1 864 413 8924
harris.houser@avisonyoung.com

Visit us online
avisonyoung.com

© 2025. Avison Young. Information contained herein was obtained from sources deemed reliable and, while thought to be correct, have not been verified. Avison Young does not guarantee the accuracy or completeness of the information presented, nor assumes any responsibility or liability for any errors or omissions therein.

656 S. Main Street, Suite 200 | Greenville, SC 29609 | 864 334 4145

**AVISON
YOUNG**