

RIDDLE
ASSOCIATES Inc.
Commercial Real Estate

PROFESSIONAL OFFICE SPACE FOR LEASE

1401 Kempsville Road, Suite D
Chesapeake, VA 23320



- 1,198 Square Feet of Office Space Available
- Lease Rate: \$21.00 Per Square Foot
- Tenant Responsible for Utilities and Janitorial
- Located in Greenbrier area near Volvo Parkway and Kempsville Road
- Easy Access to Greenbrier Parkway, Battlefield Boulevard, I-64 and I-464

EXCLUSIVELY OFFERED BY:

BILL BRACKMAN | bbrackman@riddleassociates.com | 757.523.1900

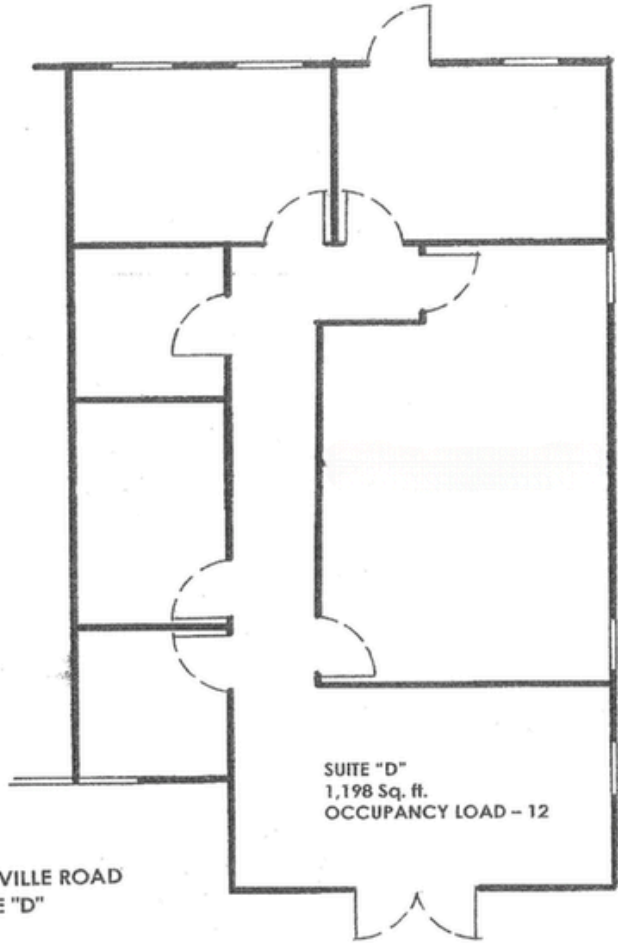
CALL TODAY FOR PRICING AND TO SCHEDULE YOUR PRIVATE TOUR!

RIDDLE ASSOCIATES, INC.
Commercial Real Estate

“Real Estate Services Tailored to Your Needs”

The information presented in this marketing flyer is obtained from sources believed to be reliable, but is not warranted. This offer is subject to prior sale or lease, errors, omissions or withdrawal without notice.

530 Woodlake Circle • Suite 100 • Chesapeake, VA 23320 • www.riddleassociates.com



1401 KEMPSVILLE ROAD
SUITE "D"

CODE COMPLIANCE - BOCA 1996 (BUILDING SHELL)
CODE COMPLIANCE - IBC 2000 (TENANT IMPROVEMENTS)
USE GROUP - B
CONSTRUCTION TYPE - 5B UNPROTECTED

RIDDLE ASSOCIATES, INC.

Commercial Real Estate

"Real Estate Services Tailored to Your Needs"

The information presented in this marketing flyer is obtained from sources believed to be reliable, but is not warranted. This offer is subject to prior sale or lease, errors, omissions or withdrawal without notice.

530 Woodlake Circle • Suite 100 • Chesapeake, VA 23320 • www.riddleassociates.com



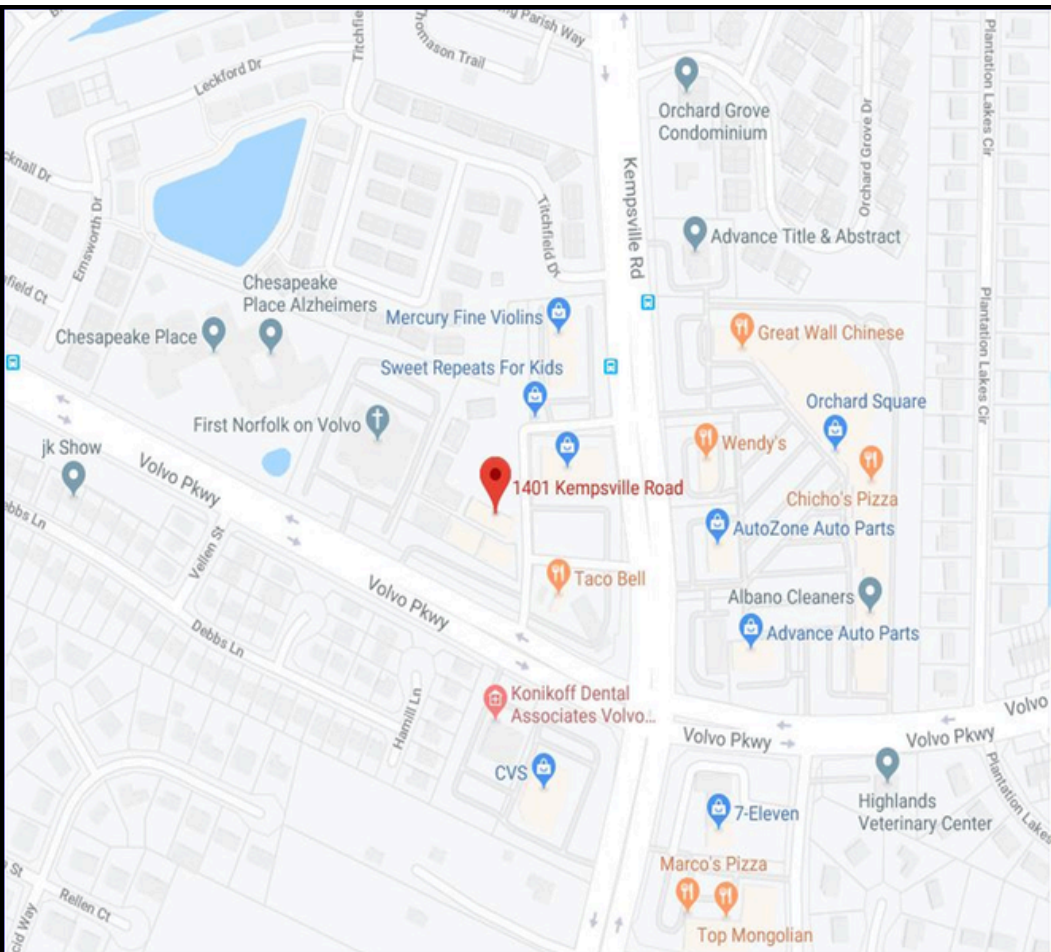
RIDDLE ASSOCIATES, INC.

Commercial Real Estate

“Real Estate Services Tailored to Your Needs”

The information presented in this marketing flyer is obtained from sources believed to be reliable, but is not warranted. This offer is subject to prior sale or lease, errors, omissions or withdrawal without notice.

530 Woodlake Circle • Suite 100 • Chesapeake, VA 23320 • www.riddleassociates.com



RIDDLE ASSOCIATES, INC.

Commercial Real Estate

“Real Estate Services Tailored to Your Needs”

The information presented in this marketing flyer is obtained from sources believed to be reliable, but is not warranted. This offer is subject to prior sale or lease, errors, omissions or withdrawal without notice.

530 Woodlake Circle • Suite 100 • Chesapeake, VA 23320 • www.riddleassociates.com