

# LEHI STATION

2901 ASHTON BLVD.  
LEHI, UT 84043



# LEHI STATION



Furniture Available



## For Lease

**\$30.00/SF Full Service**

### Property Highlights

- First Floor: 7,573 SF
- Third Floor: 28,547 SF
- Furniture available
- Walking distance to FrontRunner
- Access to covered parking, basketball/pickleball courts, full gym and electric charging station
- Perfect for businesses valuing sustainable and efficient commuting
- Capitalize on TOD stop connectivity for a dynamic and eco-friendly workplace
- Proximity to major highways and tech corridors for optimal accessibility
- Vibrant business community fostering collaboration and growth



### JEFF ROSSI

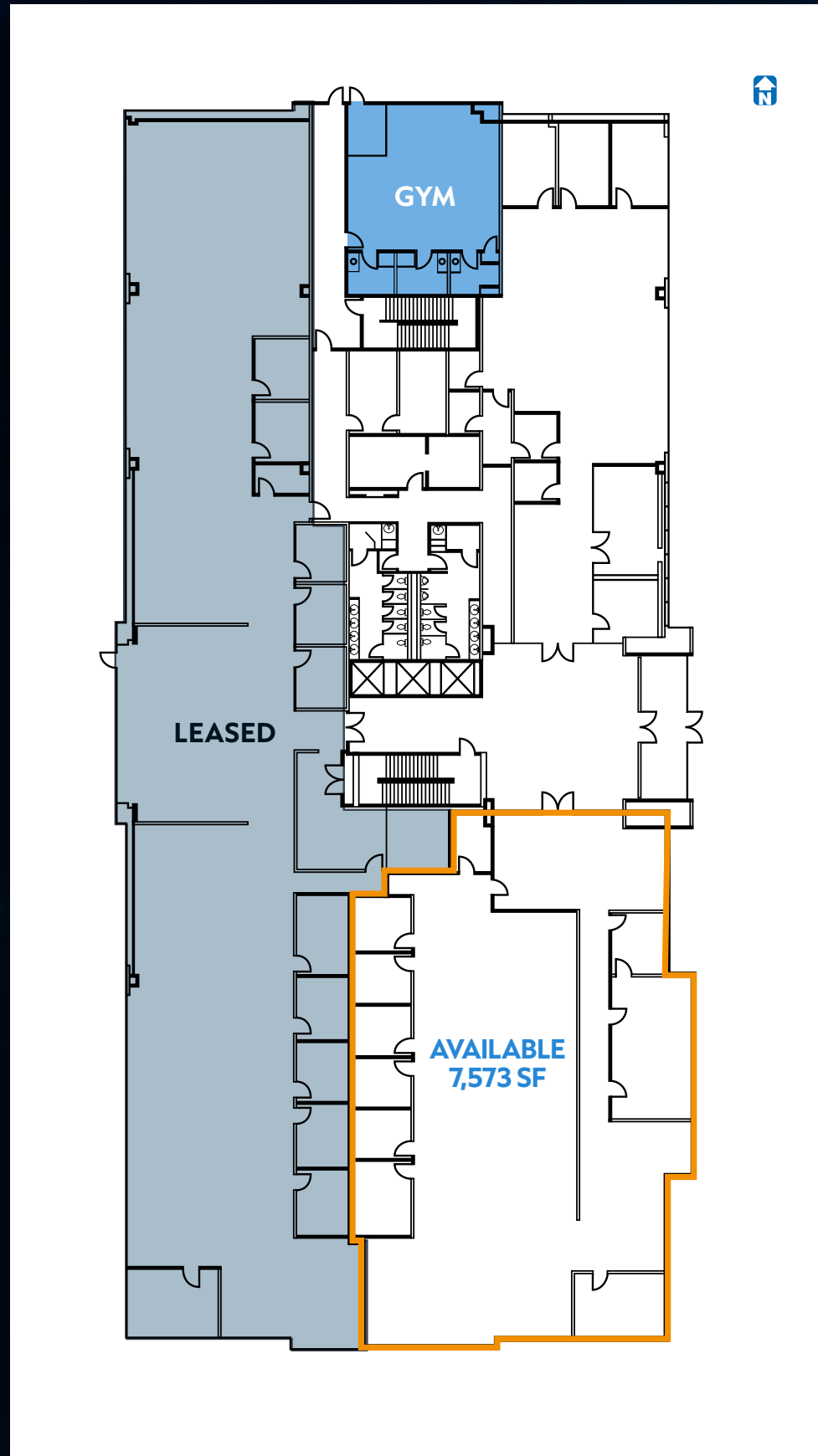
Executive Managing Director  
t 801-578-5508  
jrossi@newmarkmw.com



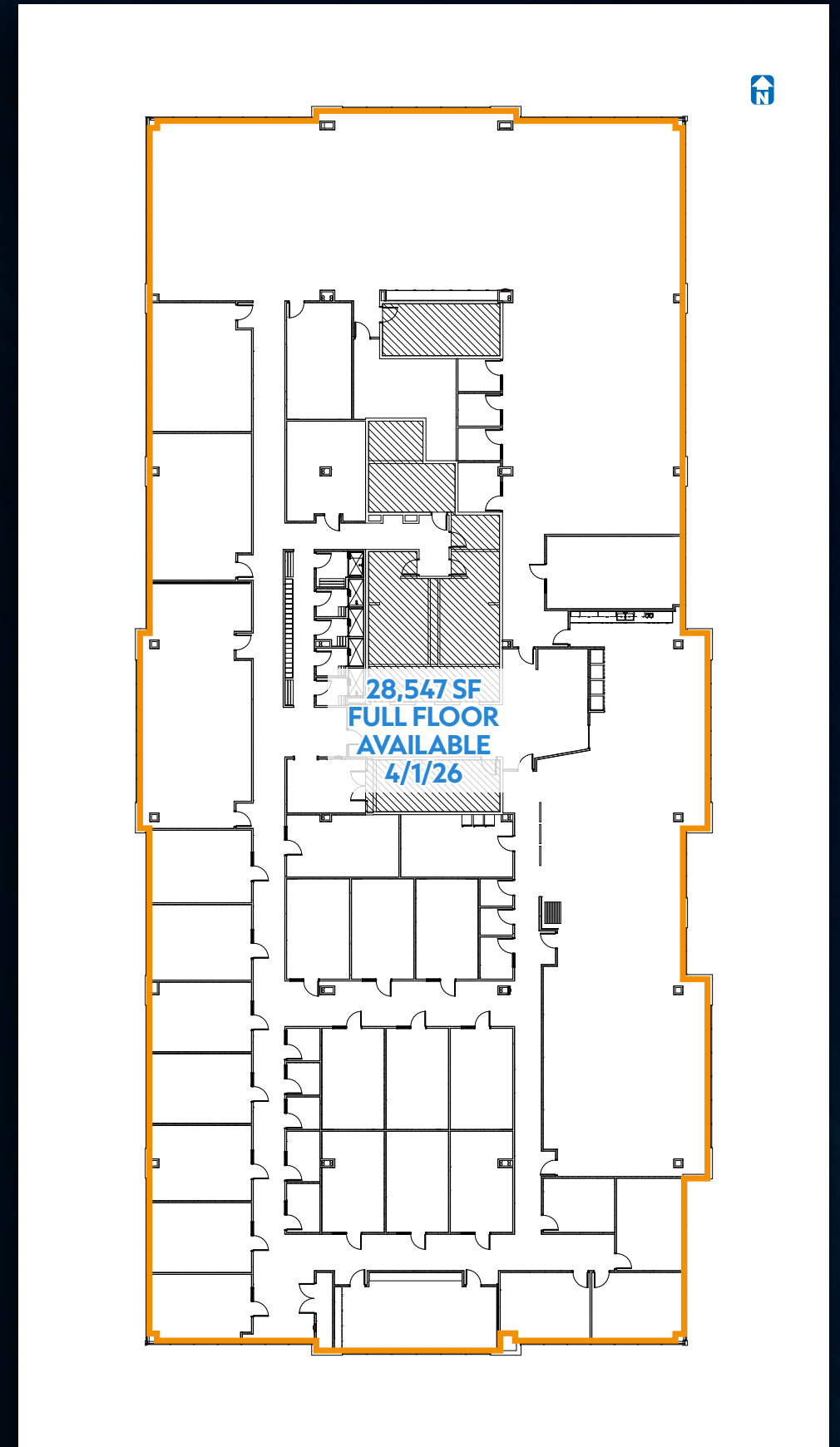
### TRIGGER REITAL

Executive Managing Director  
t 801-578-5507  
treital@newmarkmw.com

# First Floor



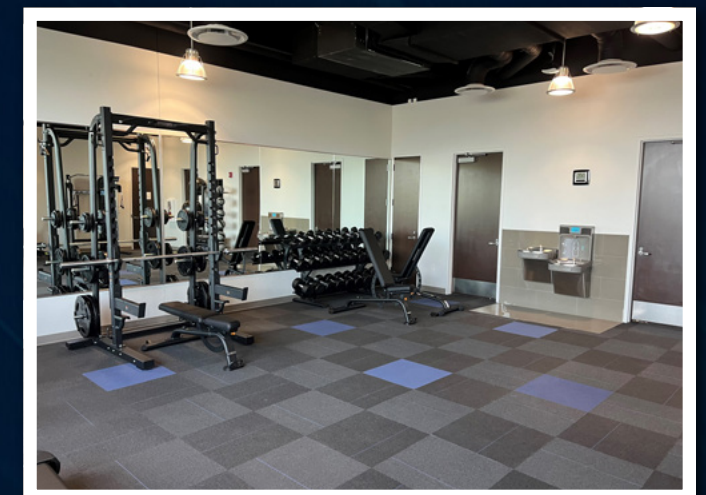
# Third Floor



# Nearby Businesses



# Right At Your Doorstep



# LEHI STATION

2901 ASHTON BLVD.  
LEHI, UT 84043



## JEFF ROSSI

Executive Managing Director  
t 801-578-5508  
jrossi@newmarkmw.com



## TRIGGER REITAL

Executive Managing Director  
t 801-578-5507  
treital@newmarkmw.com



## DIN HUREMOVIC

Associate  
t 801-578-5506  
dhuremovic@newmarkmw.com



The information herein has been obtained from sources deemed reliable but has not been verified and no guarantee, warranty or representation, either express or implied, is made with respect to such information. Terms of sale or lease and availability are subject to change without withdrawal or notice.