

## NEWBURYPORT DEVELOPMENT

A NEW ENGLAND DEVELOPMENT Company

# 15 GREEN STREET

## Newburyport, Massachusetts

### PROPERTY DETAILS

#### Address:

15 Green Street  
Newburyport, MA 01950

#### Space Available:

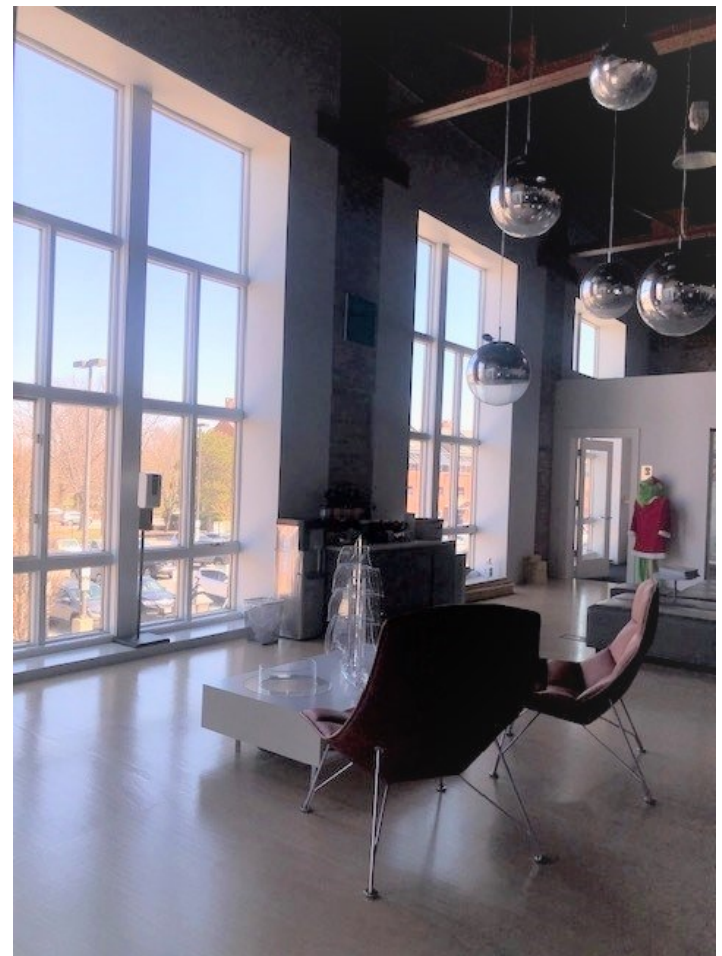
6,400 SF

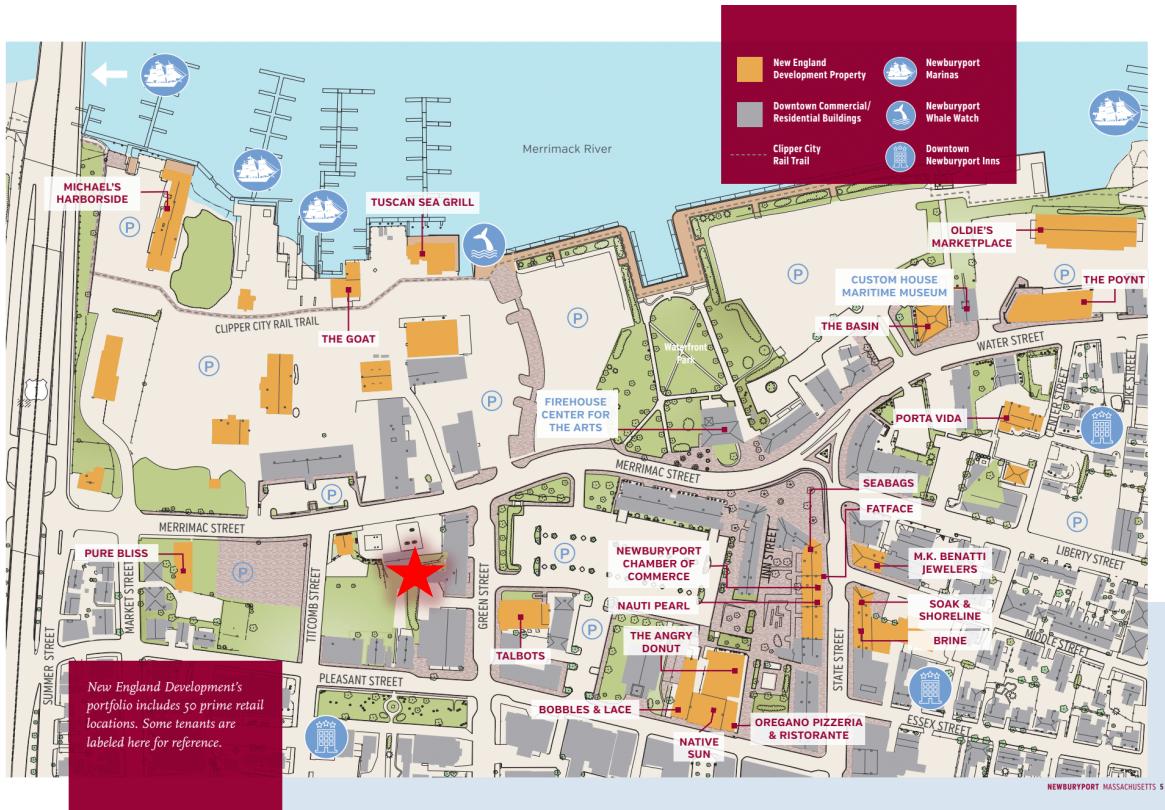
### LEASING INFORMATION:

Sheila Twomey  
Leasing Manager  
Office: 978.225.1548  
Mobile: 978.360.1878  
STwomey@NewburyportDev

**Rare office leasing opportunity in downtown Newburyport. This stunning 6,400 square foot space consists of a beautiful, open layout with ample room for teamwork and collaboration as well as private office and conference room space. (5,101 main floor / 1,299 mezzanine).**

“The Strand Theater” operated for 42 years before being converted to first class office and retail space. This second floor space is the ideal home for any innovative company looking to take their operations to the next level. With a wall of floor to ceiling windows facing the Merrimack River, this space is designed to keep your team energized and productive all day long. Newburyport is a fantastic place to work, live and play. This is a must see property.





### AMENITIES

- Prime office space available located in this beautifully restored historic, downtown building with views of the Merrimack River.
- Handicapped accessible with direct elevator access.
- Adjacent to municipal parking lot with 250 spaces.
- Vibrant downtown economy with over 40 restaurants, more than 75 stores, two theaters, and four marinas.
- 35 miles north of Boston/ 30 miles south of Portsmouth, NH.
- Excellent local and regional access to major highways I-495, 95, Routes 1 and 1A, and commuter rail station with service to and from Boston a mile away.

