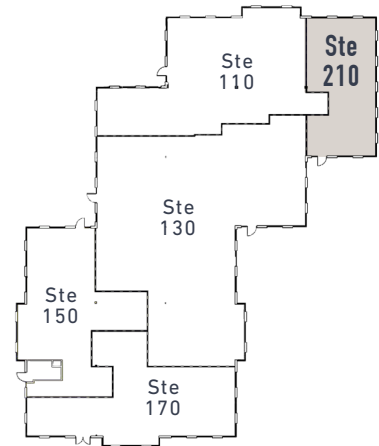
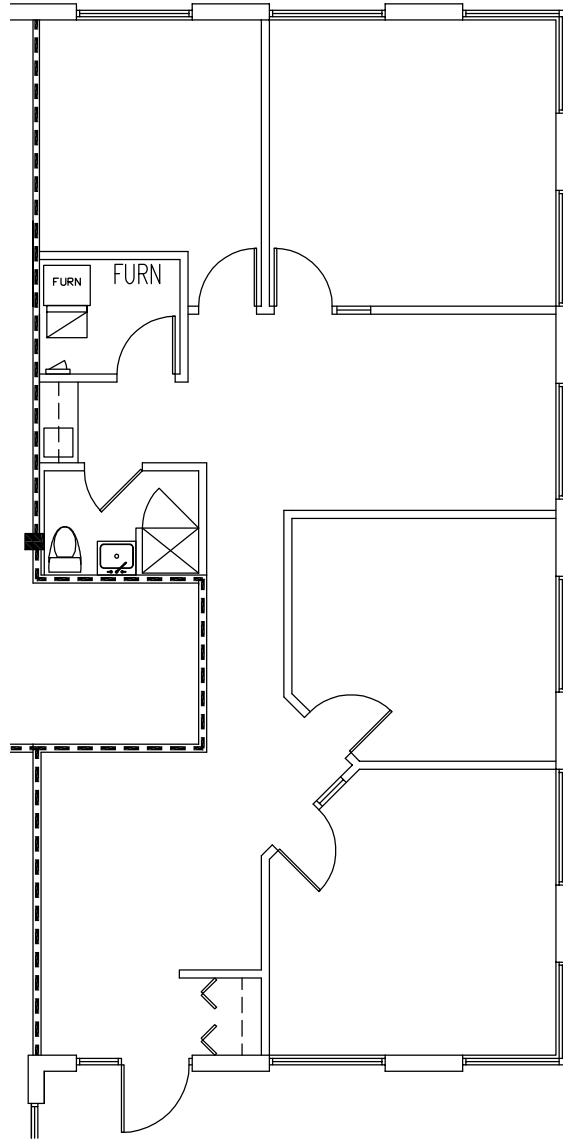




# QUAIL RIDGE OFFICE CENTRE

110-240 Quail Ridge Drive  
Westmont, IL

Building A  
Suite 210 / 1,424 RSF



## CONTACT

**JIM ADLER**  
630 691 0605  
jadler@hiffman.com

**DAN O'NEILL**  
630 691 0610  
doneill@hiffman.com

**COURTNEY SWEISS**  
630 317 0748  
csweiss@hiffman.com

GROUP RMC

**NALHiffman**  
Commercial Real Estate Services, Worldwide