

EXCLUSIVE LISTING

545 WEST 25TH STREET

CLICK
HERE FOR
A VIRTUAL
TOUR OF THE
5TH FLOOR

CHELSEAARTSTOWER

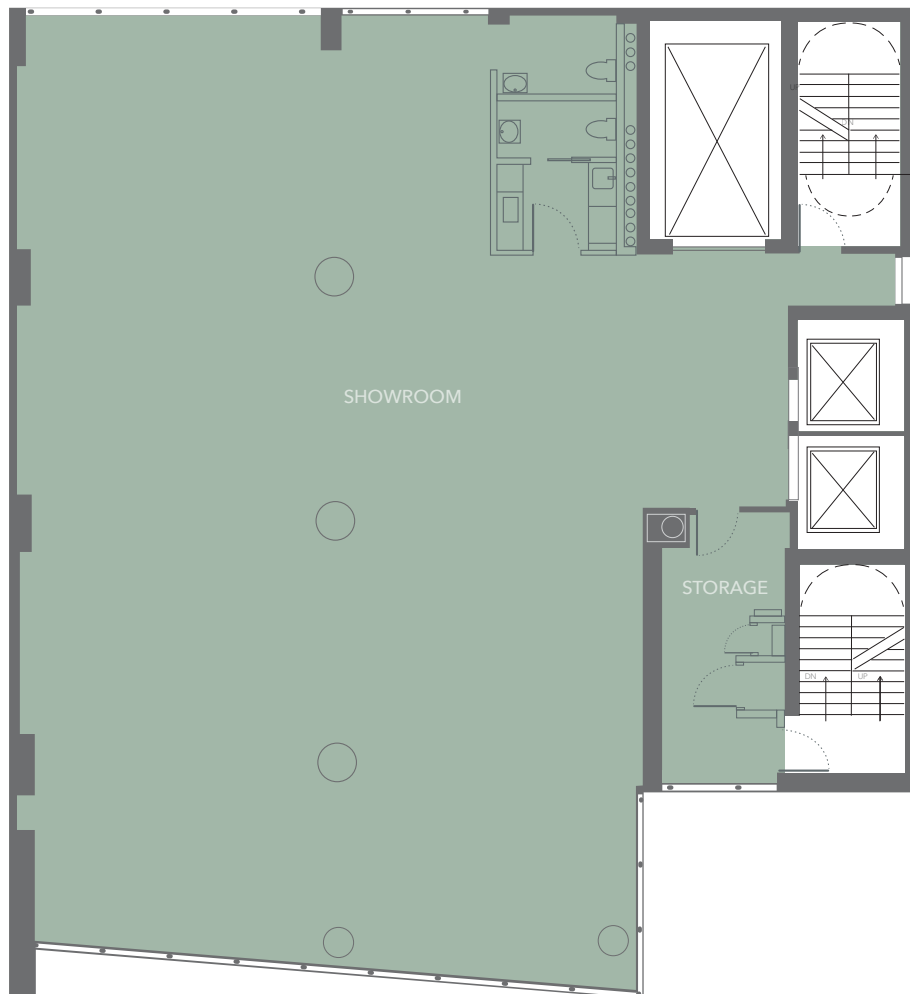
545 WEST 25TH STREET

AREA (approx.) Entire 4th Floor 5,400 RSF
Entire 5th Floor 5,400 RSF
Floors can be leased separately or together

RENT \$65 per rentable square foot

POSSESSION 4th Floor March 1, 2027
5th Floor July 1, 2026

- COMMENTS**
- Perfect for fashion, tech, media, finance, and family office
 - Panoramic views of the City and Hudson River
 - Steps from the High Line
 - 11' ceilings
 - Move-in ready
 - Two passenger elevators and a large freight elevator
 - 24/7 access and attended lobby
 - Preeminent Chelsea Building in the heart of the Gallery District



545 WEST 25TH STREET

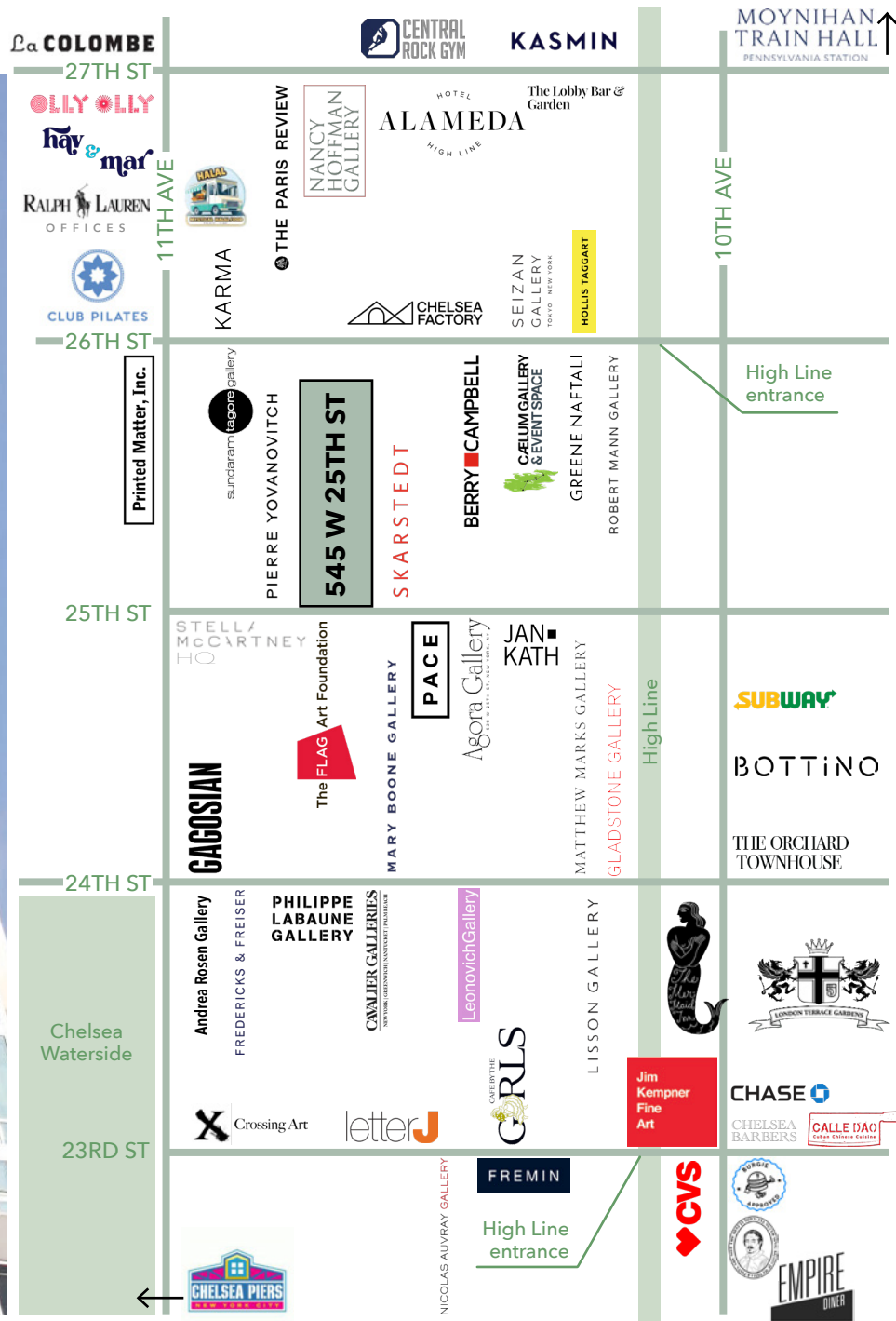


545 WEST 25TH STREET



isaacs and company
commercial real estate

545 WEST 25TH STREET



FOR MORE INFORMATION CONTACT EXCLUSIVE AGENTS:

Joel Isaacs
646 710 3890
joel@isaacsandcompany.com

Greg Flood
646 710 3894
greg@isaacsandcompany.com