

Two Turtle Creek

3838 Oak Lawn Avenue, Suite 1000, Dallas, TX 75219



PRIVATE OFFICES

Highly professional private offices for individuals and teams that are flexible and scaled for growth.

MEETING ROOMS

Spacious, well-appointed meeting rooms with on-site administrative support. Available for an hour, day or longer.

VIRTUAL OFFICES

Establish a business presence with mail handling, phone answering or meeting room time.

ABOUT THIS LOCATION

Breathtaking views of Downtown Dallas from prestigious Turtle Creek! This 10th floor suite offers dramatic views, a friendly staff, and immediate proximity to Highland Park and Uptown. Walk to nearby restaurants and shops or enjoy the onsite amenities. Two Turtle Creek provides 24/7 on-site security and is located between the Dallas North Tollway and Highway 75 near Lemmon Avenue.

CONTACT US

Let's touch base! Contact the on-site General Manager at 469-317-6300 or TCVmanager@premierworkspaces.com to schedule a tour.



Two Turtle Creek

3838 Oak Lawn Avenue, Suite 1000, Dallas, TX 75219



PREMIER AMENITIES

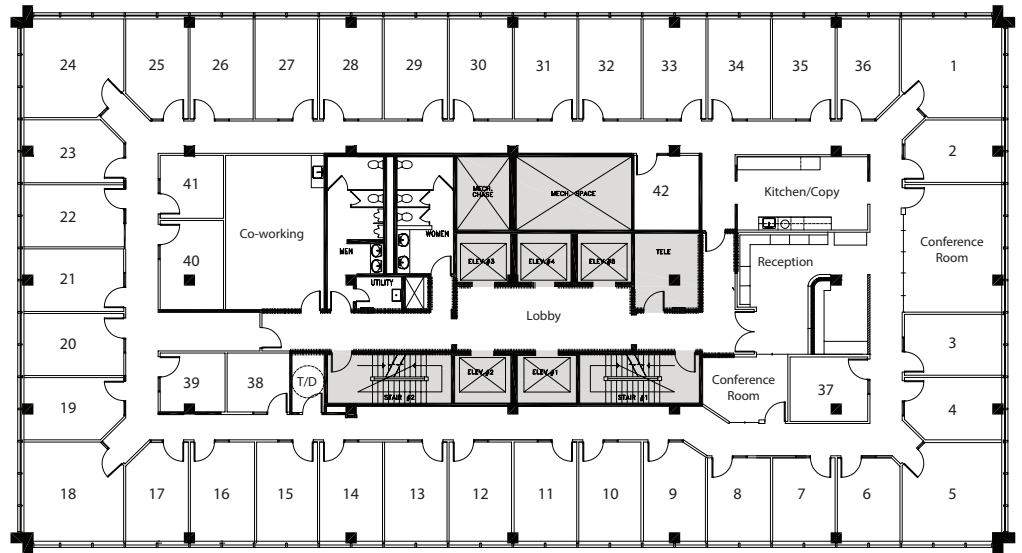
Our private suites can be easily customized to fit your desired aesthetic and brand.

- Private Offices
- Team Rooms
- High Speed Internet
- Telephone Answering
- Mail Collection
- Equipped Kitchen
- Day Offices
- Meeting Rooms
- Daily Janitorial
- Furnished or Unfurnished

PREMIER DIFFERENCE

We've been perfecting the professional workspace for over 17 years.

- Highly-Professional Atmosphere
- On-Site Manager & Support Staff
- Scalable Solutions for Individuals and Teams
- On-Site Billing
- 90+ Locations Nationwide



NEARBY AMENITIES

Turtle Creek is nestled in the Oaklawn area of Greater Dallas. It's known for its beautiful high-rises and proximity to Highland Park, Knox-Henderson and Uptown.

Nearby Amenities:

- Equinox Highland Park
- LA Fitness
- Highland Park Village
- Turtle Creek
- Turtle Creek Park
- Uptown
- Walking Trails

Nearby Transit:

- Freeways – Dallas N Tollway, 75, 366
- Air – Dallas-Fort Worth (DFW)
- Air – Love Field (LOV)
- Bus – DCTA

CONTACT US

Let's touch base! Contact the on-site General Manager at 469-317-6300 or TCVmanager@premierworkspaces.com to schedule a tour.